



3/27-29 Churchill Avenue Strathfield, NSW



2



1



1

## Garden Apartment

Introducing a meticulously well designed single-level two-bedroom villa-style apartment, tailored to suit contemporary living. This flexible and generously proportioned home features a spacious and private rear courtyard, complete with lush grass and total privacy, beckoning you to extend your living space outdoors.

Freshly renovated with crisp paint, brand new kitchen, pristine bathroom and stylish floating timber floors throughout, this property is move-in ready. For added convenience, there's a lock-up garage with internal access.

Nestled in a tranquil cul-de-sac within a boutique block, this apartment offers an internal laundry and complete level access. This property is perfect for downsizers seeking a low-maintenance lifestyle, investors looking for a promising asset and first home buyers eager to step into the market.

You'll appreciate the prime location, just steps away from Strathfield Square and Strathfield train station, ensuring that all your daily needs are within easy reach. Don't miss out on this fantastic opportunity to secure a stylish and conveniently situated home wi...

- Impeccably designed 2 bedroom villa-style apartment for contemporary living
- Spacious and private rear courtyard with lush grass for extended outdoor living
- Recent renovations include fresh paint, brand new kitchen & pristine bathroom
- Internal laundry and lock-up garage with internal access for added convenience
- Perfect for downsizers, investors & first home buyers, easy access to amenities
- Prime location near Strathfield Square, Strathfield station & prestigious schools

**Price:** Auction | Time Realty

**Council Rates:** \$400.00 p/q

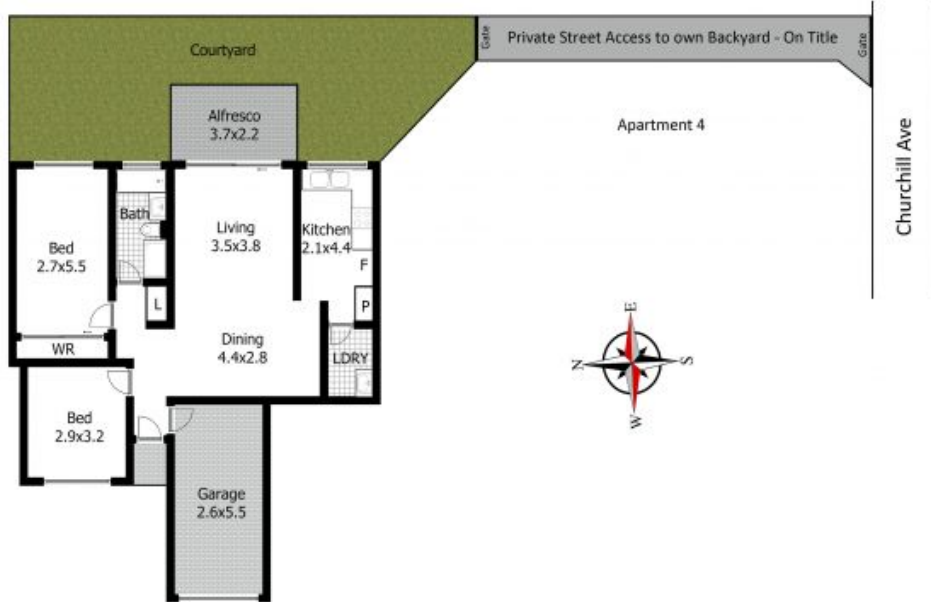
**Water Rates:** \$181.00 p/q

**Strata Rates:** \$923.90 p/q

**Adam Scappatura Frank Settineri**

0413 355 481

0414 889 319



All information contained herein is gathered from sources we believe to be reliable. However, we cannot guarantee its accuracy and interested persons should rely on their own enquiries.