



105/27 Bennelong Parkway Wentworth Point, NSW

 2
  2
  1

SOLD! - Waterfront Lifestyle at its Finest

Perfectly positioned in the desirable waterfront complex Mariners Cove with views over Homebush Bay and direct beach pool access, this ground floor apartment offers the ideal lifestyle. Sit back, relax and enjoy sunny days and afternoons in the enormous North Easterly outdoor entertaining area, a great place to unwind and spend time with family and friends.

Price: SOLD | Time Realty
Council Rates: \$317.00 p/q
Water Rates: \$174.00 p/q
Strata Rates: \$1,774.20 p/q

This stunning apartment offers 2 large bedrooms with built-ins, 2 bathrooms including ensuite, and an open plan living area all with a great indoor/outdoor connection, air conditioning and secure undercover parking.

Enjoy resort facilities all year round including private beach pool with lush garden surrounds, gym equipment, steam room and secondary swimming pool. Public transport is at your door, with easy access to Ferry and Train services. Together with shopping and lifestyle destinations of Sydney Olympic Park, ANZ Stadium, Marina Square and Rhodes station all within close proximity.

- 2 bedroom ground floor apartment with views over Homebush Bay
- Large outdoor living with easy direct access to resort style facilities
- 2 Bathrooms including ensuite in main bedroom, Air- conditioning
- Open plan living, internal access to basement security parking
- Moments from all amenities incl. Public Transport, Shops & Bay

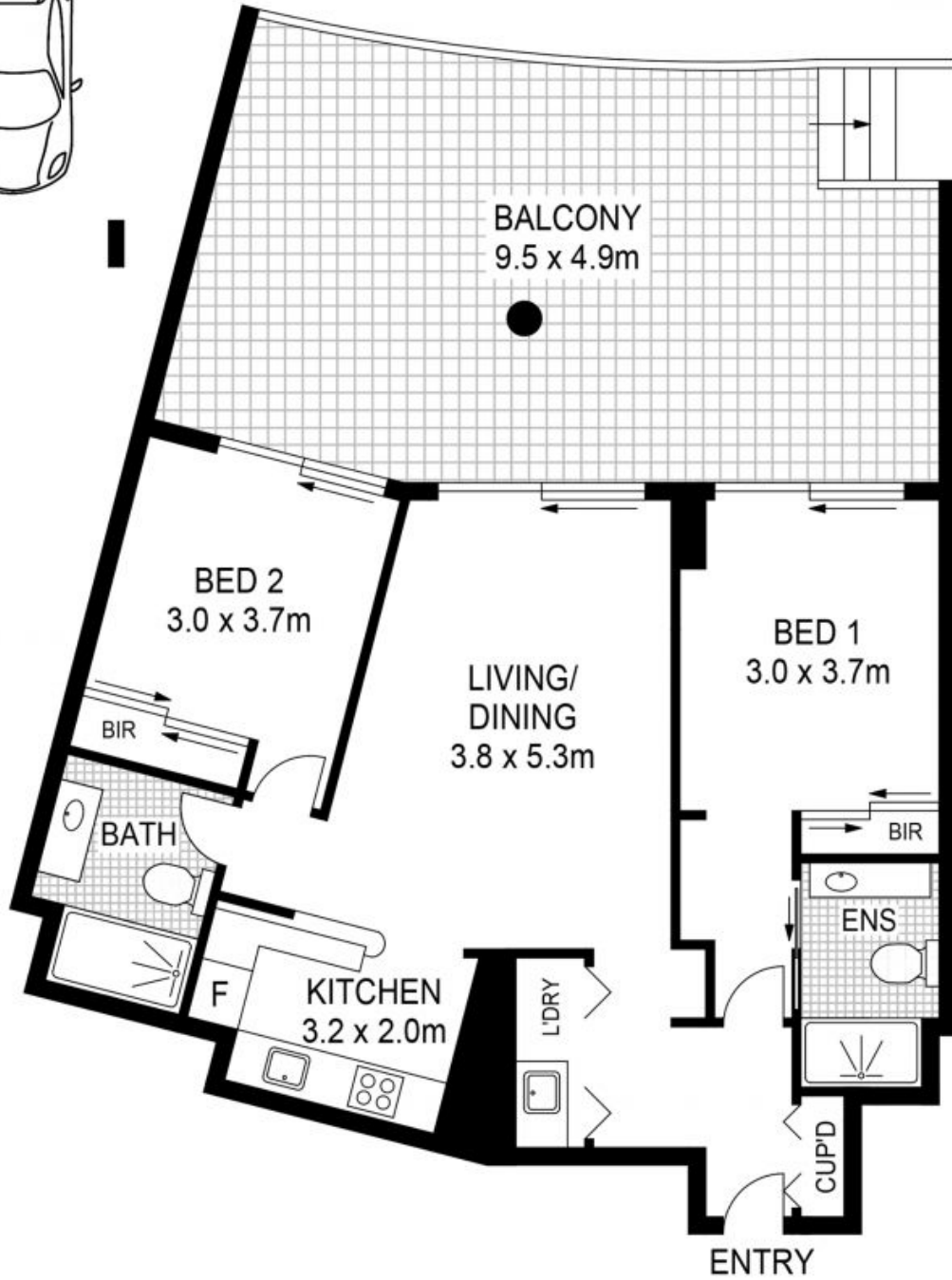
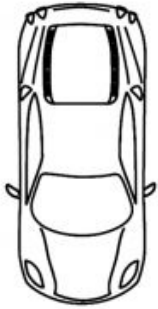
Frank Settineri

0414 889 319

Adam Scappatura

0413 355 481

CAR SPACE
2.8 x 6.3m



PLANS SHOWN ONLY INDICATIVE OF LAYOUT. DIMENSIONS ARE APPROXIMATE.



105/27 Bennelong Parkway
WENTWORTH POINT

EST - 1979
time