



11/10 Bortfield Drive Chiswick, NSW



2



1



1

Ready for a Revamp

Located directly across from the beautiful water's edge and Ferry wharf is this spacious 2-bedroom apartment just waiting for someone to add their special touch. Offering a large dining/living area, tidy and functional kitchen and bathroom, internal laundry and private, leafy and sunny balcony with water glimpses.

Both bedrooms are generously proportioned and there is also the convenience of an undercover car space and storage. Situated in a well maintained block with low levies and all amenities nearby including shops, parks, bay and public transport.

A great opportunity for anyone who is willing to put in some work and transform this unit into a modern and comfortable home, unleashing the potential this apartment has to offer. Ideal for the astute investor or for those looking to move in to the very desirable and exclusive Chiswick peninsula.

- Large 2 bedroom apartment that is ripe for renovation
- Spacious living, private & leafy balcony with water glimpses
- Tidy and functional kitchen & bathroom, internal laundry
- Well maintained block, undercover car space plus storage
- Located across from Ferry wharf with all amenities close by

Price: SOLD | Time Realty

Council Rates: \$301.00 p/q

Water Rates: \$157.00 p/q

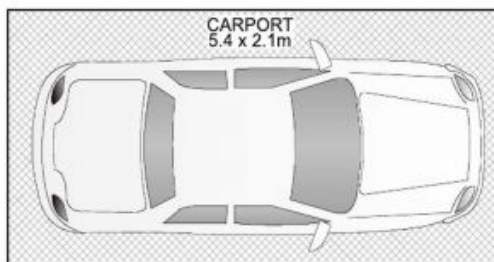
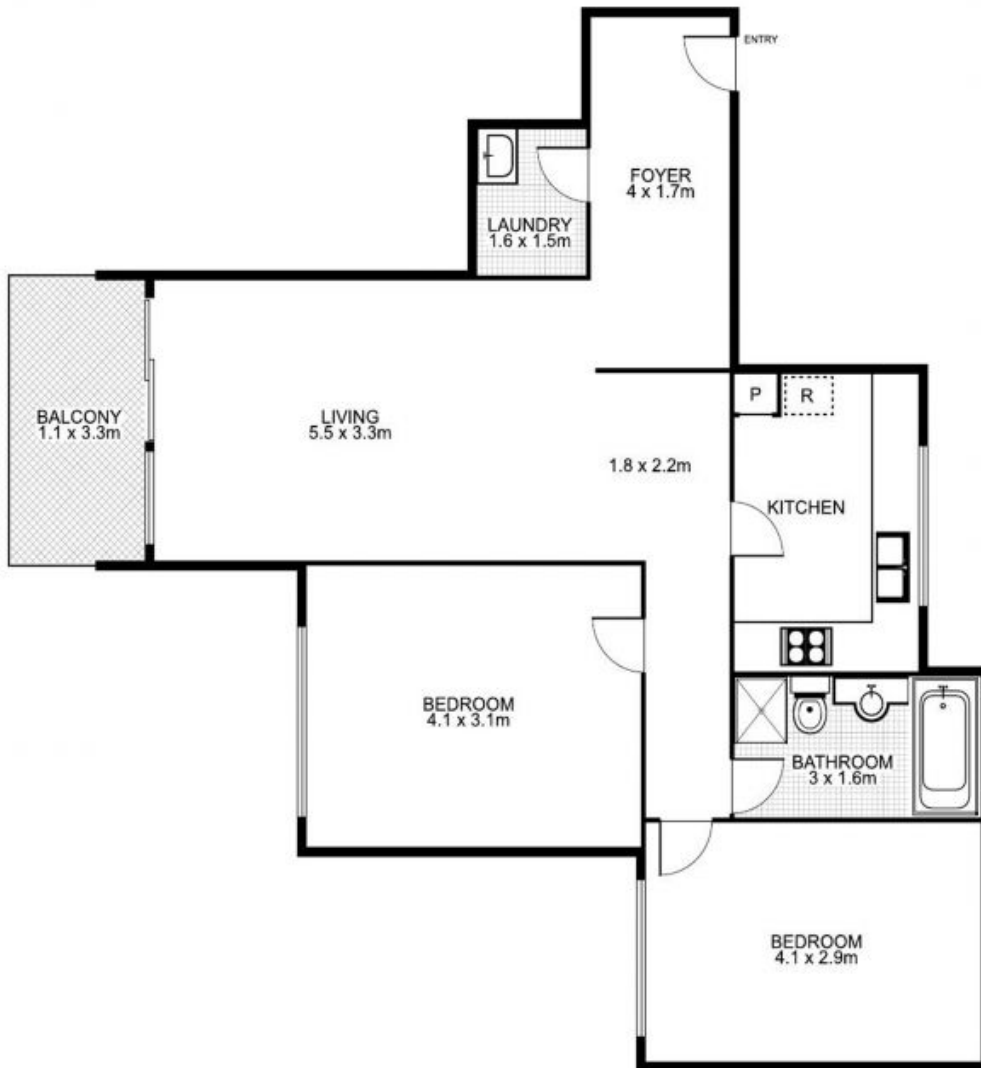
Strata Rates: \$1,047.45 p/q

Frank Settineri

0414 889 319

Adam Scappatura

0413 355 481



PLANS SHOWN ONLY INDICATIVE OF LAYOUT. DIMENSIONS ARE APPROXIMATE.



11/10 Bortfield Drv
CHISWICK

EST — 1979
time