



15/10 Harvard Street Gladesville, NSW

2 1 1

A light and airy top floor retreat with leafy views

For Sale \$599,000 - \$609,000

A superb lifestyle opportunity comes with this freshly presented apartment that's sensationally located an easy stroll down to Gladesville's village hub, shops, cafés and bus connections to the city. Its top floor position in a boutique security complex gives it an elevated outlook over the area, plus it is light filled throughout and ready to move in and enjoy.

The layout is perfect for those who value low-maintenance living as it features a practical design with a combined living and dining area that opens onto a sunlit balcony. A big feature of this property is its well-appointed open kitchen that comes complete with a breakfast bar plus plenty of storage and workspace. There are also two good-sized bedrooms, one with mirrored built-ins, a full bathroom and car space on title.

It offers excellent value for money and represents an ideal first home or investment package for buyers looking for a quality property in a highly convenient setting. From this great location it's also walking distance to Boronia Park and shopping amenities along Pittwater Road, incl...

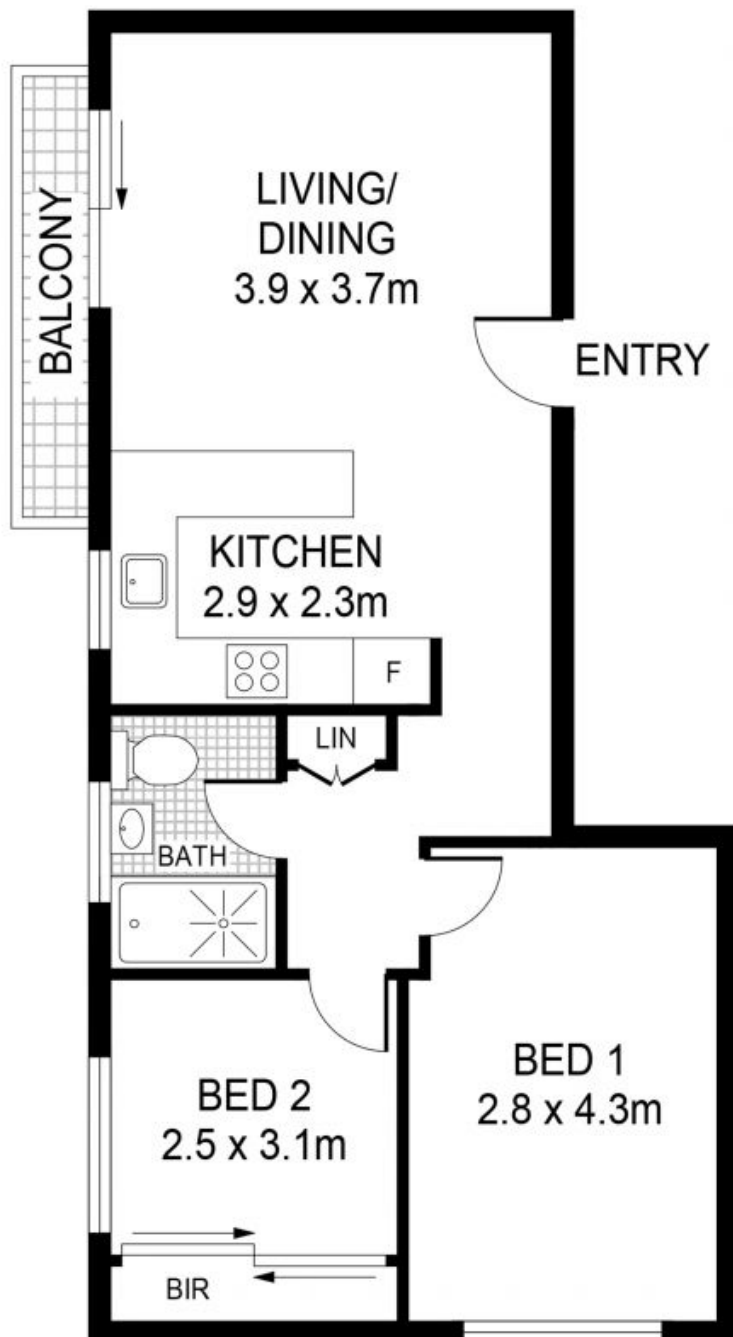
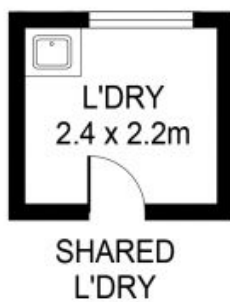
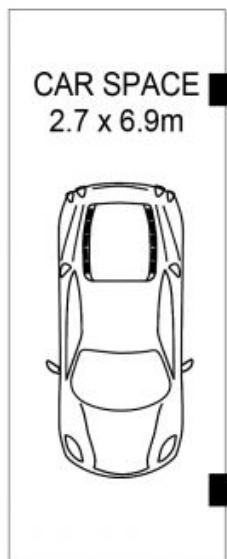
- A generous design featuring a bright and airy open living space
- Sunlit balcony that captures an elevated outlook over the area
- Two peaceful bedrooms include one with a mirrored built-in
- Well-appointed kitchen, full bathroom and large shared laundry
- Set on top of a boutique security block with car space on title
- Lots of potential to further update and add extra style and value
- Well-positioned just around the corner from Gladesville village

Price: SOLD By Lambros Markessinis | Time Realty
Council Rates: \$321.00 p/q
Water Rates: \$164.00 p/q
Strata Rates: \$1,106.80 p/q

Lambros Markessinis | Time Realty

0407 788 777

9712 1188



PLANS SHOWN ONLY INDICATIVE OF LAYOUT. DIMENSIONS ARE APPROXIMATE.



15/10 Harvard street
GLADESVILLE

EST — 1979
time