



18 Fitzroy Street Abbotsford, NSW

2 1

Waterview Potential

Ideally located within the beautiful and much sought after Abbotsford Peninsula is this original 2 bedroom home.

Rarely offered within this exclusive street, this home offers scope to further explore the opportunities to capitalise on potential views from a second-floor addition (STCA).

Build your dream home (STCA) or simply restore it to its former glory, the opportunities are endless with such a perfect location only moments away from local schools, shops, cafes, waterfront reserves and walkways.

Public transport is readily available via the Rivercat Ferry at Abbotsford wharf providing access to the CBD and surrounding waterfront suburbs with public bus services only a short stroll away.

- 2 Bedroom home in the sought after Abbotsford Peninsula
- Original home set on a land size of 303.5 sqm(approx.)
- Enjoy water views from a second floor addition (STCA)
- Renovate or knock down & build your dream home (STCA)
- Short stroll to parks, shops, schools, cafes, and waterfront

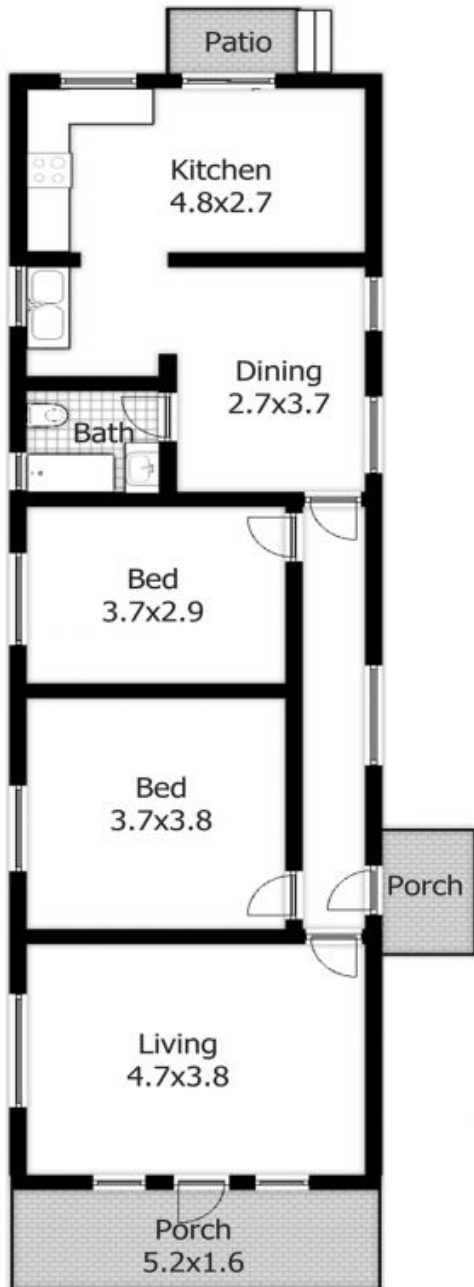
Price: SOLD | Time Realty
Council Rates: \$409.00 p/q
Water Rates: \$157.00 p/q

Adam Scappatura Frank Settineri

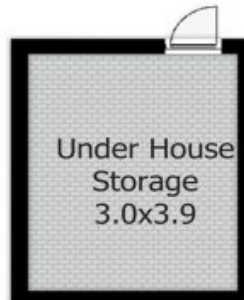
0413 355 481

0414 889 319

FLOOR PLAN

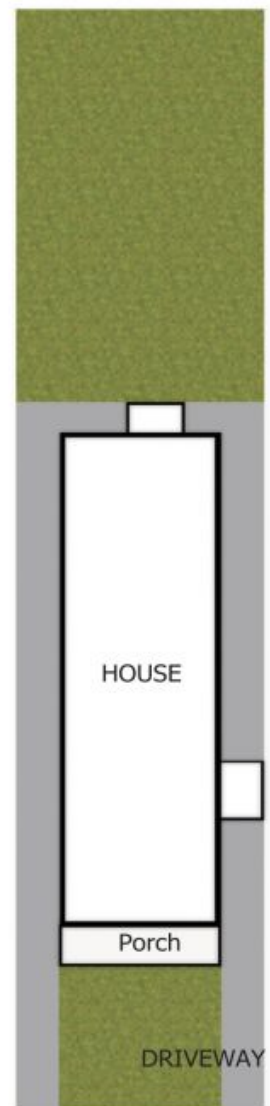


(NOT IN POSITION)



(NOT IN POSITION)

SITE PLAN



PLANS SHOWN ONLY INDICATIVE OF LAYOUT. DIMENSIONS ARE APPROXIMATE.



18 Fitzroy St
ABBOTSFORD

EST — 1979
time