



22 First Avenue Rodd Point, NSW



3



1



1

Modern Home in Prestigious Location

This recently renovated home is situated just off the popular Bay Run and waterfront. Close to parks such as Rodd Park and Nield Park, cafes, and shops, all located right at your door step.

Located within 8km of Sydney CBD, and surrounding inner city suburbs such as Leichhardt, Balmain and Glebe. Transport is available with buses only metres away or Chiswick Wharf only a short drive.

Features include:

- Three spacious bedrooms, one bedroom with large built in wardrobe, main bedroom with balcony.
- Ducted air con throughout
- Modern kitchen with stainless steel appliances, gas cooking (Fridge included)
- Polished floors throughout
- Spacious lounge area with high ceilings
- Separate dining area or study room at the rear of the home.
- Updated bathroom plus 2nd toilet and Internal laundry
- Lock up garage for one car and long driveway to park another 2 cars.

Price: DEPOSIT TAKEN

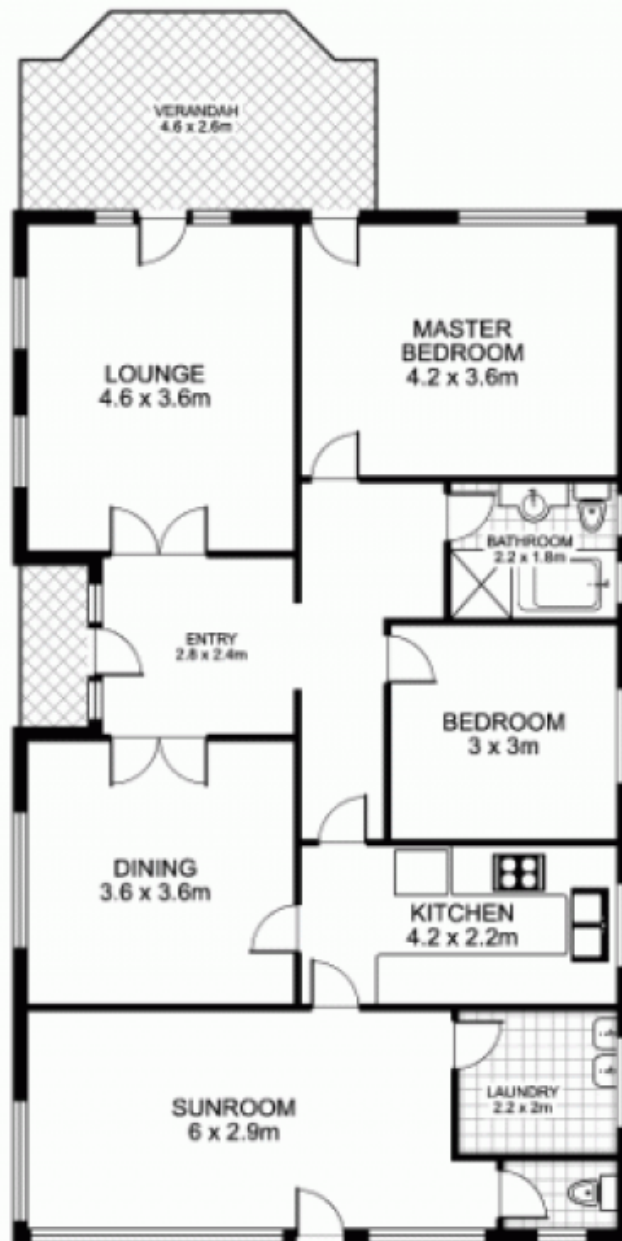
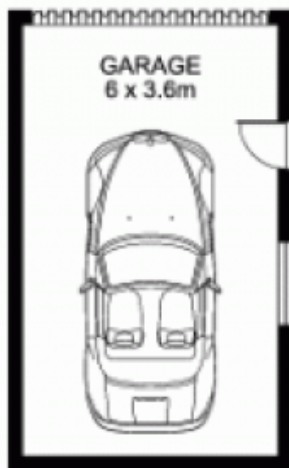
Available Date: 2022-12-01

Adam Scappatura Emanuel Koumis

0413 355 481

0402 644 121

22 First Avenue, RODD POINT



NORTH

Plans by
surroundpix
com.au
1300 30 32 40

This floor plan is intended as a guide only. Layout dimensions are approximate only. No representations or warranties of any nature whatsoever are given or intended. Any person using this information should rely on their own enquiries