



16/2 Evelyn Avenue Concord, NSW



## Space, Style & Sophistication!

Be amazed by this spacious mid floor two bedroom apartment. This apartment offers impeccably appointed interiors with its spacious sunlit living area flowing onto an entertainer's balcony with pleasant garden outlook. Features that complement this apartment are its modern kitchen with stainless steel appliances, polished floors in living areas, two large bedrooms with built-ins, luxurious state of the art bathroom, air conditioning and undercover parking. This apartment is sure to impress. Be quick and inspect today.

- Mid floor 2 Bedroom apartment with built-ins
- Modern kitchen with stainless steel appliances
- Living with polished floorboards flows to balcony
- Luxurious bathroom, air con & undercover car space
- Close to transport, parks, cafes, shops and the bay

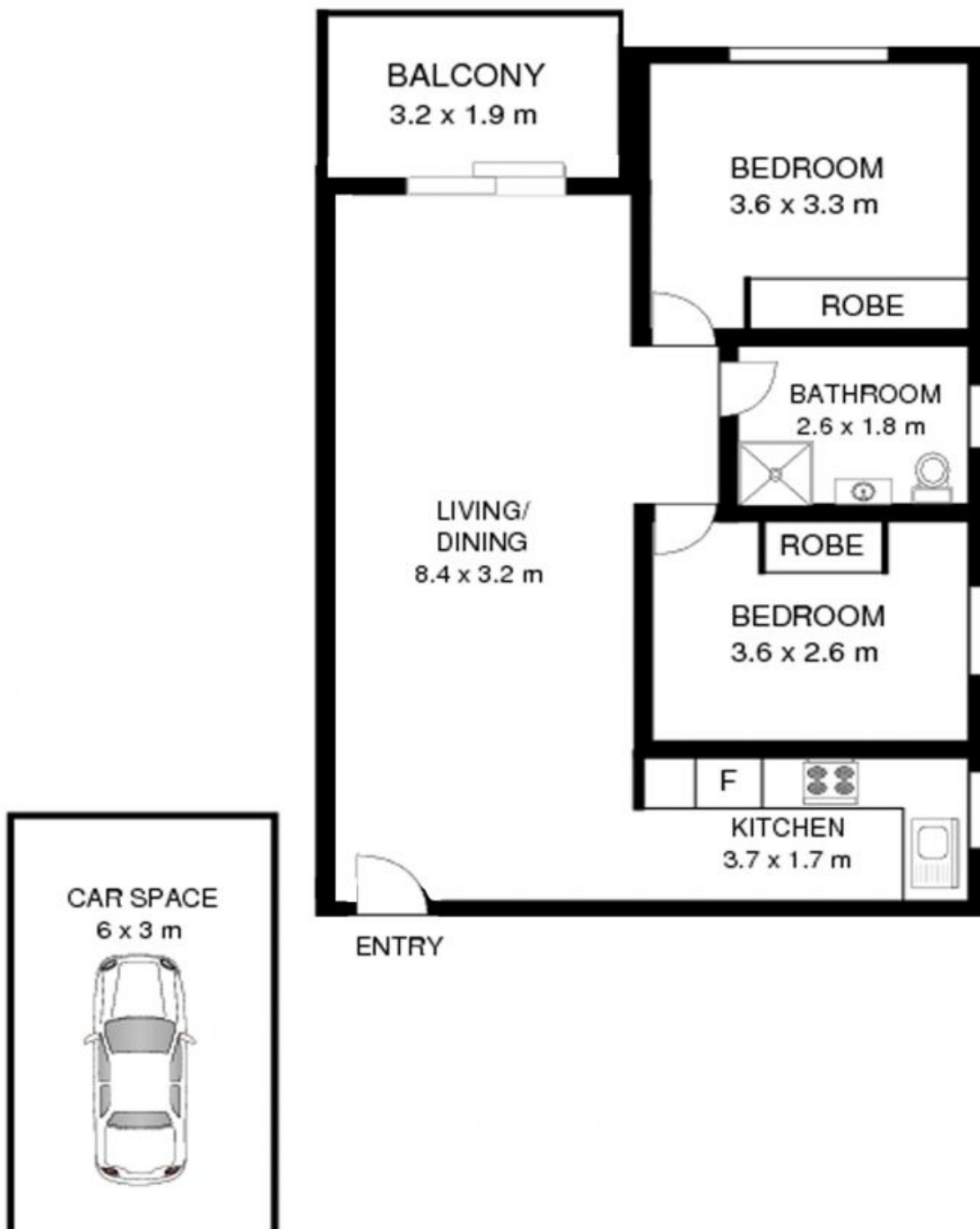
**Price:** SOLD | Time Realty  
**Council Rates:** \$302.00 p/q  
**Water Rates:** \$167.00 p/q  
**Strata Rates:** \$1,029.70 p/q

**Adam Scappatura** **Frank Settineri**

0413 355 481

0414 889 319

PLANS SHOWN ONLY INDICATIVE OF LAYOUT. DIMENSIONS ARE APPROXIMATE.



16/2 Evelyn Ave  
CONCORD

EST — 1979  
time