



9/1 Rokeby Road Abbotsford, NSW



2



1



2

SOLD - Sun-drenched Easterly Aspect

Prestigiously positioned in the very sought after Abbotsford Peninsula, this exceptional lifestyle residence has the most perfect bright and airy Easterly aspect. With filtered views of Abbotsford Bay, and the city skyline this is the ultimate in bayside living only moments from cafes, local shopping village, parks, ferry and all amenities.

Offering 2 generously sized bedrooms, modern kitchen and bathroom and a sun-filled living area which flows out to a large East facing balcony with views over the Bay and distant City skyline.

Located in a small boutique security block of only 10 apartments with lock up garage plus an additional undercover car space, internal laundry and split system air conditioning only add to the appeal and comfort of this outstanding residence.

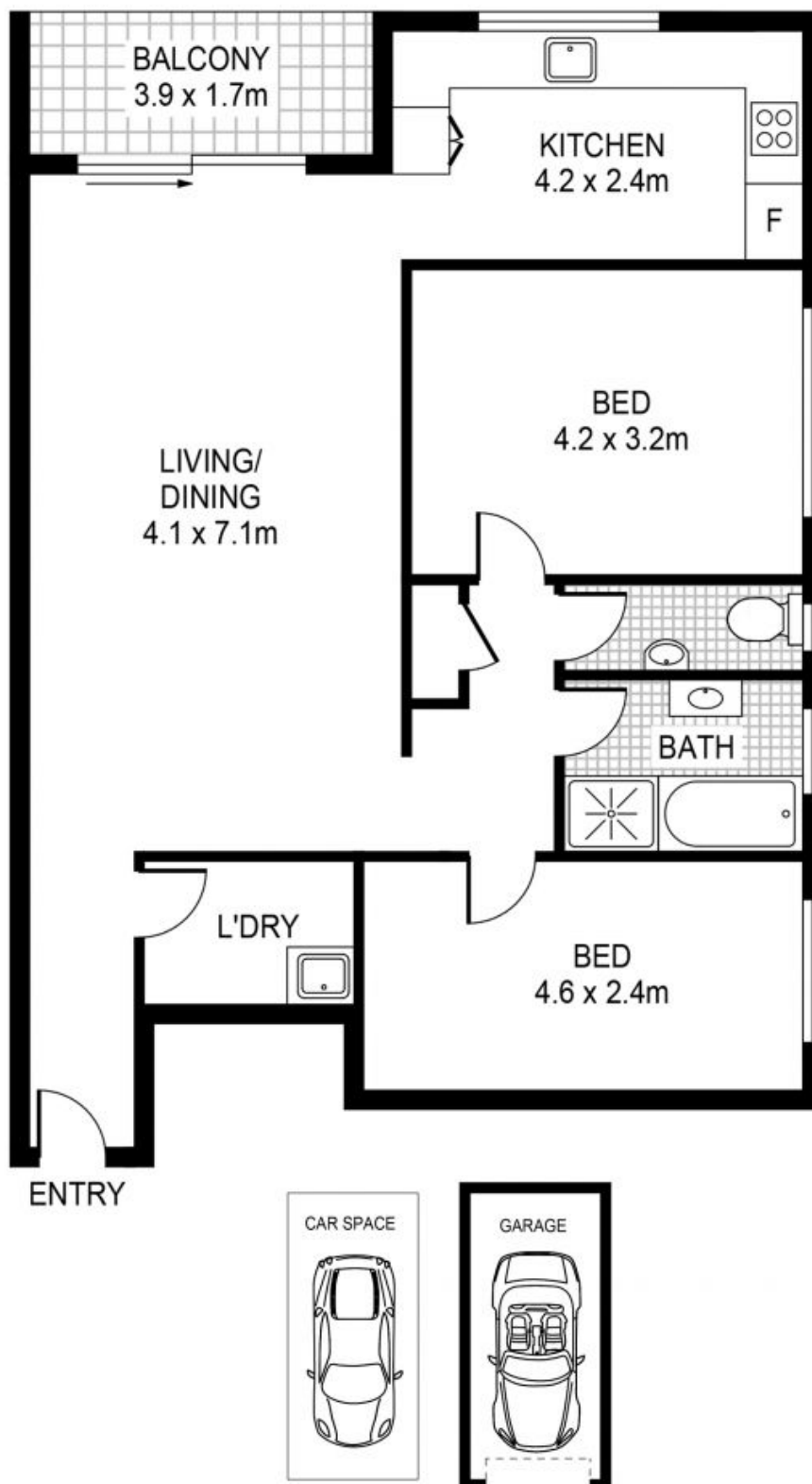
- Spacious and bright 2 bedroom apartment with views
- Easterly aspect, airy open plan light filled living area
- Sunny balcony with filtered water and district views
- Internal laundry, lock up garage plus second car space
- Small boutique block, short easy walk to all amenities

Price: SOLD Prior to Auction | Time Realty
Council Rates: \$295.00 p/q
Water Rates: \$148.00 p/q
Strata Rates: \$1,114.00 p/q

Adam Scappatura Frank Settineri

0413 355 481

0414 889 319



PLANS SHOWN ONLY INDICATIVE OF LAYOUT. DIMENSIONS ARE APPROXIMATE.



9/1 Rokeby Road
ABBOTSFORD

EST — 1979
time