



1/11-13 Bay Road Russell Lea, NSW



2



1



1

## SOLD - North Facing stunner with views

Perfectly positioned in the highly sought after Russell Lea locale, this elevated ground floor apartment with no steps is only a short stroll from the beautiful water's edge.

With a highly desired Northerly aspect, this bright and airy apartment boasts generously sized double bedrooms, large kitchen, renovated bathroom, spacious open plan living with polished timber floors, internal laundry, undercover car space located metres to your door step and a sundrenched balcony with stunning views over Five Dock Bay.

Ideally located at the front of small boutique block in Russell Lea's most sought-after streets with all amenities nearby including public transport, parks, local shopping village, Ferry wharf and Bay, makes this property perfect for the first home buyer, downsizer or investor.

- North facing two bedroom apartment with water views
- Polished timber floors, internal laundry, large kitchen
- Renovated bathroom, built-in robes in main bedroom
- Elevated ground floor with no steps, freshly painted
- Located close to water's edge, public transport & parks

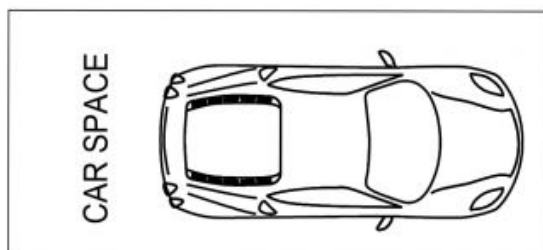
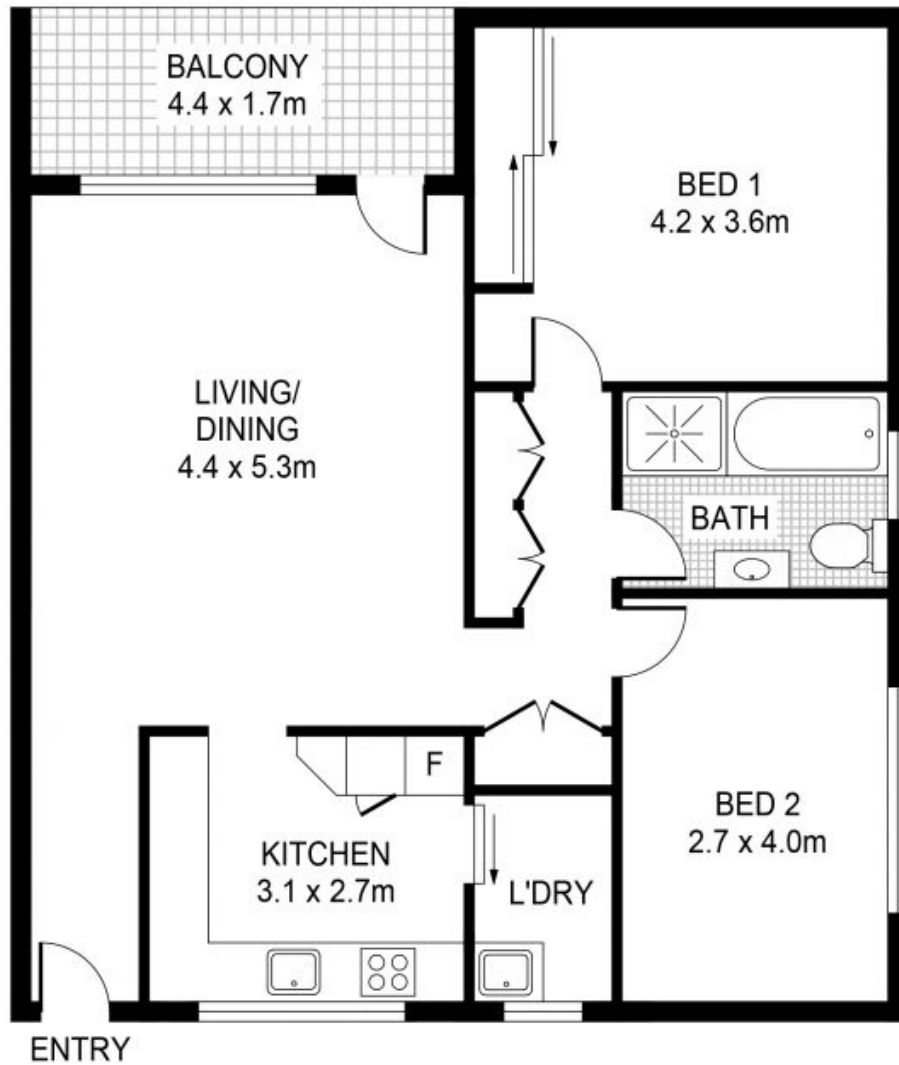
**Price:** SOLD | Time Realty  
**Council Rates:** \$295.00 p/q  
**Water Rates:** \$148.00 p/q  
**Strata Rates:** \$890.00 p/q

**Adam Scappatura** **Frank Settineri**

0413 355 481

0414 889 319

PLANS SHOWN ONLY INDICATIVE OF LAYOUT. DIMENSIONS ARE APPROXIMATE.



(Position of car space  
to the apartment)



1/11 Bay Road  
**RUSSELL LEA**

EST — 1979  
**time**