



6/4 Church Street Ashfield, NSW



2



1



1

## Rare Offering in Great Location

Perfectly positioned just a short stroll from Ashfield Station is this fantastic two bedroom apartment.

Located in a quiet street on the second floor of a well maintained block and boasting an abundance of natural light, features include two large bedrooms. With spacious living and dining areas that lead out to a bright and sunny balcony enjoying a great outlook.

The large kitchen is sizeable and very functional and you will be impressed with the large bathroom & internal laundry. Another rare feature for this great apartment is the large lock up garage. All amenities are only a short stroll away, including trains, buses, shops/cafes, schools, gyms & parks. A rare offering in a great location, not to be missed!

- Spacious bright & sunny 2 bedroom apartment
- Open plan living, sunlit balcony, lock up garage
- Large bathroom & large kitchen, internal laundry
- Well maintained block, located on second floor
- Located close to trains, buses, schools & shops

**Price:** SOLD | Time Realty

**Council Rates:** \$331.00 p/q

**Water Rates:** \$154.00 p/q

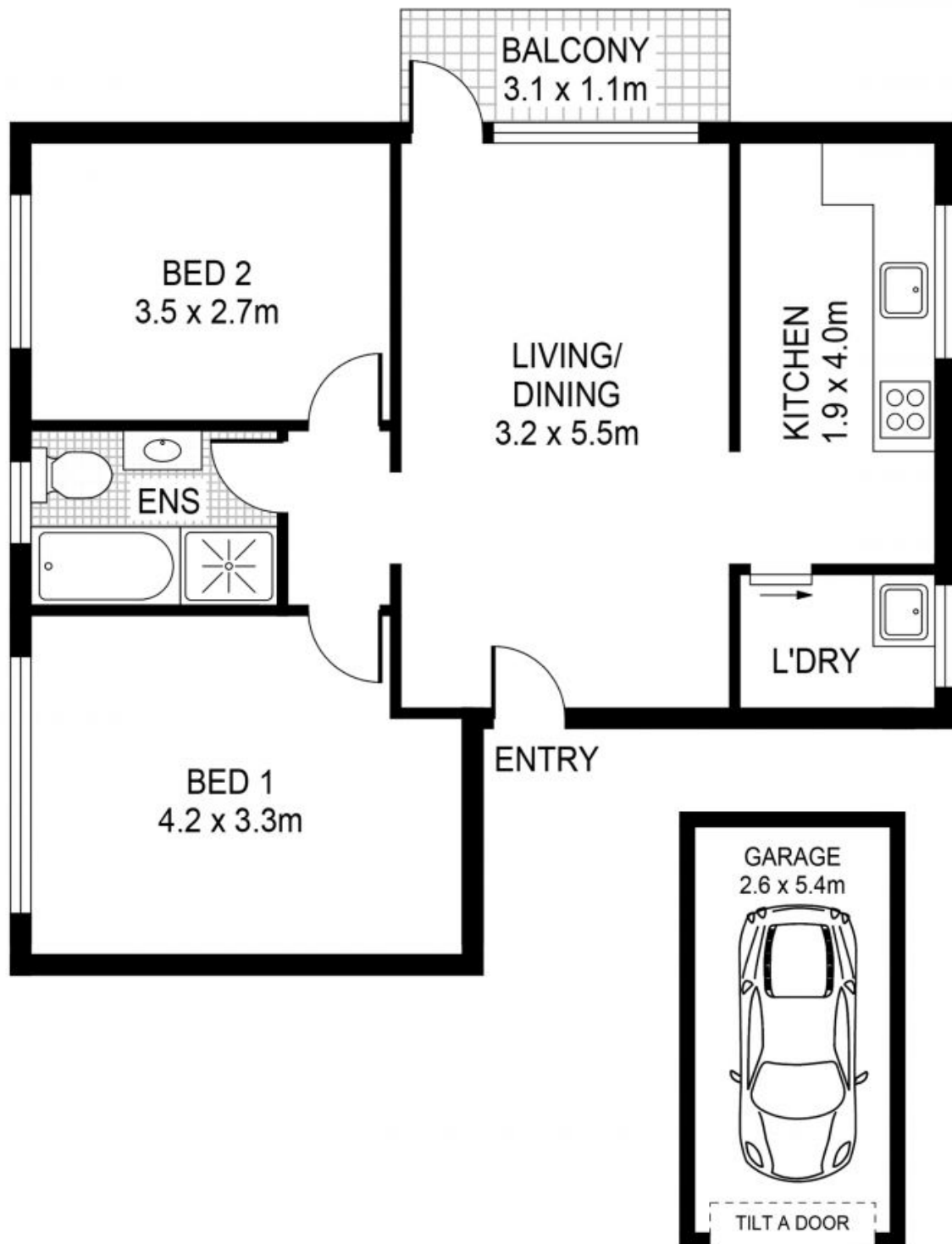
**Strata Rates:** \$978.39 p/q

**Adam Scappatura Frank Settineri**

0413 355 481

0414 889 319

PLANS SHOWN ONLY INDICATIVE OF LAYOUT. DIMENSIONS ARE APPROXIMATE.



6/4 Church Street  
**ASHFIELD**

EST — 1979  
**time**