



1/164B Burwood Road CONCORD, NSW



3



2



2

## SOLD BY CHRIS GEORGANTONIS

Set in a resort styled estate of "The Annery" ideally positioned in a quietly private lush bayside location moments away from the water's edge of Exile Bay delivers this impeccable three level townhouse within a sought after peninsula address. Offering three bedrooms fitted with ample sized built-ins/sliding full length mirror doors, large main bedroom with ensuite finished in marble, access to North vantage balcony overlooks the detailed grounds and manicured landscape of Pelican Point.

With your own private entrance, step inside a home filled with warm beaming natural light, generous family area, large open plan lounge/dining leading onto a spacious outdoor balcony making ideal for an evening of alfresco dining or catering. Quality appointments throughout featuring deluxe gas/stainless steel kitchen & chefs serving hatch, fully marbled tiled bathrooms/guest powder room blended with granite vanities, solid double brick home high ceilings installed with designer light fittings.

Delivering a luxurious relaxed resort lifestyle with the included essentials of a gym, sauna, sparking in-gro...

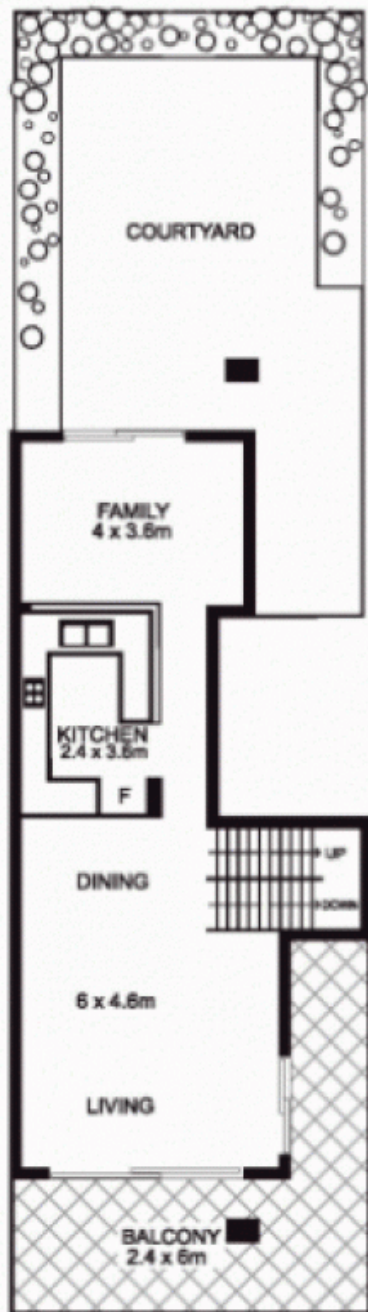
**Price:**

SOLD - \$850,000

**Chris Georgantonis**

0405 640 830

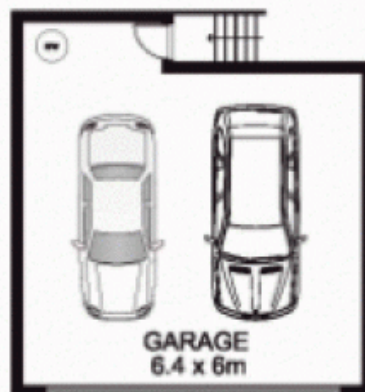
# 1/164B Burwood Rd, CONCORD



MIDDLE FLOOR



UPPER FLOOR



GROUND FLOOR



This floor plan is intended as a guide only. Layout dimension are approximate only. No representation or warranties of any nature whatsoever are given or intended. Any person using this information should rely on their own enquiries.