



23/1 Sandpiper Crescent Newington, NSW

 3
  2
  2

## SOLD - Penthouse retreat offering light, space and views

This superb penthouse apartment showcases contemporary flair throughout with impressive proportions, a light-filled two-level layout and panoramic views over the surrounding area. Set on the top floor of a quality security building, it offers a fresh and airy living space with a flowing floorplan that takes full advantage of natural light and the elevated outlook.

The spacious design enjoys excellent cross flow of air with extra-high ceilings and big windows to ensure good natural light and with a choice of large-sized terraces makes outdoor entertaining easy while enjoying the spectacular views. Three bedrooms on the upper level include a large main with built-ins, ensuite and access to a sunlit balcony, plus there is a separate home office or media area.

Cooking will be a dream in this newly renovated high spec kitchen with Caesar stone benchtops and backsplash, fitted with state-of-the-art appliances such as SMEG built-in deep fryer and grill, wine fridge, Bosch gas cooking, dishwasher and so much more.

This superb building is extremely well-maintained and offers residents' access...

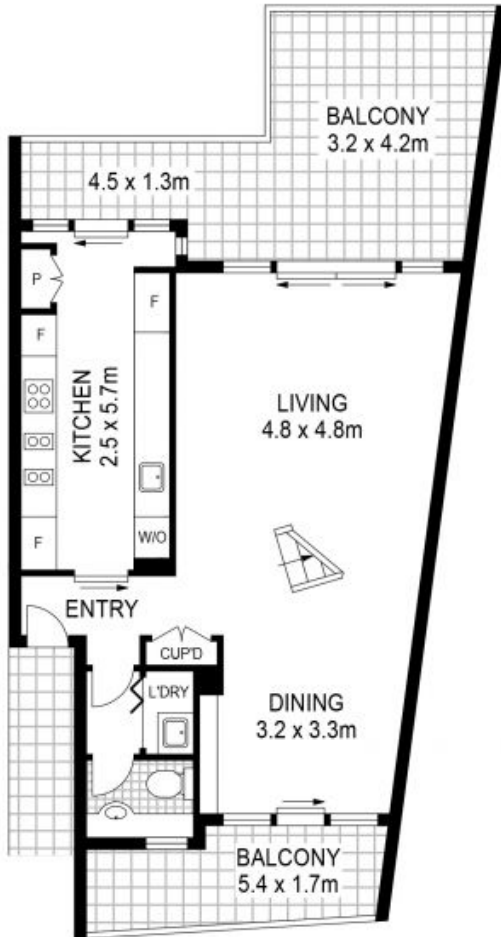
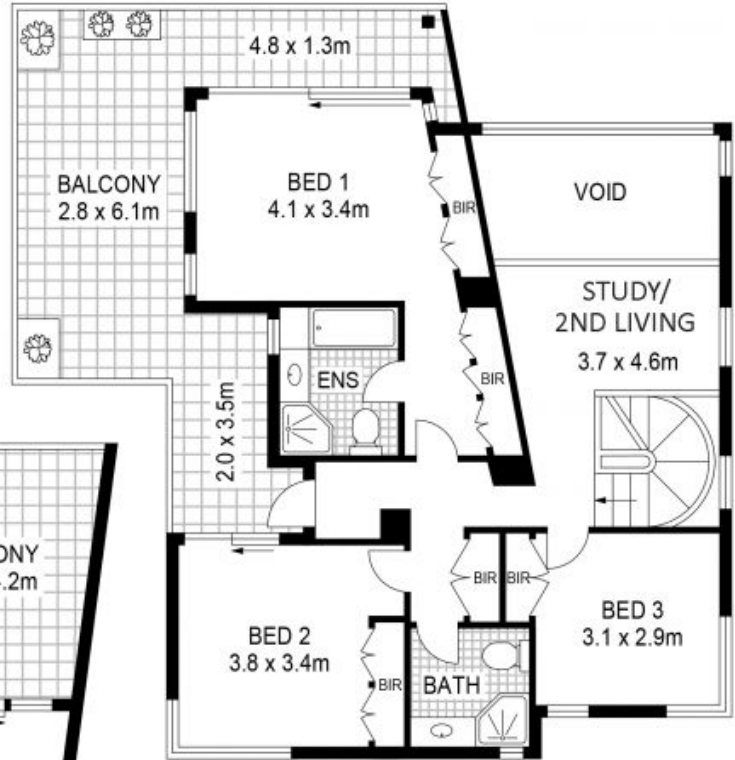
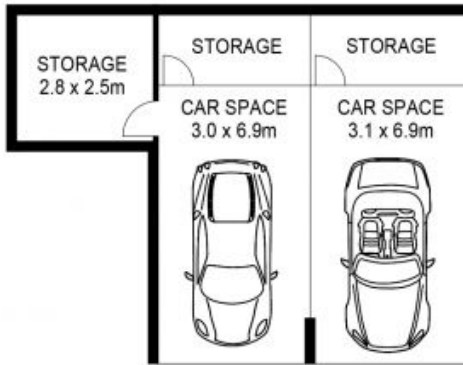
- Elevated panoramas that stretch to the Olympic stadium
- Spacious open plan design featuring double-height ceilings
- A wide entertainment terrace that flows off the living space
- 3 Upper-level bedrooms plus a separate study/media area
- Master bedroom with ensuite & access to a private balcony
- High-quality kitchen with premium fittings and appliances
- 2 Security underground car spaces, storage room & cages
- Residents' access to a swimming pool and BBQ facilities

**Price:** SOLD | Time Realty  
**Council Rates:** \$294.00 p/q  
**Water Rates:** \$179.00 p/q  
**Strata Rates:** \$1,823.25 p/q

**Adam Scappatura Frank Settineri**

0413 355 481

0414 889 319



PLANS SHOWN ONLY INDICATIVE OF LAYOUT. DIMENSIONS ARE APPROXIMATE.



23/1 Sandpiper Crescent  
NEWINGTON

EST — 1979  
time