



2/1 Rokeby Road Abbotsford, NSW



2



1



2

Oversized North Facing Apartment

Perfectly positioned in the highly sought after Abbotsford Peninsula, and only a short stroll from the beautiful water's edge is this impeccable 2 bedroom apartment.

With a highly desired Northerly aspect, this bright and airy apartment boasts generously sized double bedrooms, large renovated kitchen and a spacious open plan living area that flows easily out to a large North Facing balcony which is just perfect for outdoor living and entertaining.

Other features include renovated bathroom with separate toilet, internal laundry and a lock up garage plus second car space on title.

Ideally located at the front of small boutique block of only 10 in one of Abbotsford's most sought-after streets with all amenities nearby including public transport, parks, local shopping village, ferry wharf and Bay, makes this property perfect for the home occupier or investor.

Please note currently leased till 10/06/22

- North Facing bright & airy 2 bedroom apartment, 129sqm
- Spacious living area with large sunny North Facing balcony
- Beautifully renovated kitchen & bathroom, internal laundry
- Small boutique block, lockup garage plus second car space
- Short walk to Bay, parks, shops, transport and all amenities

Price: SOLD | Time Realty

Council Rates: \$295.00 p/q

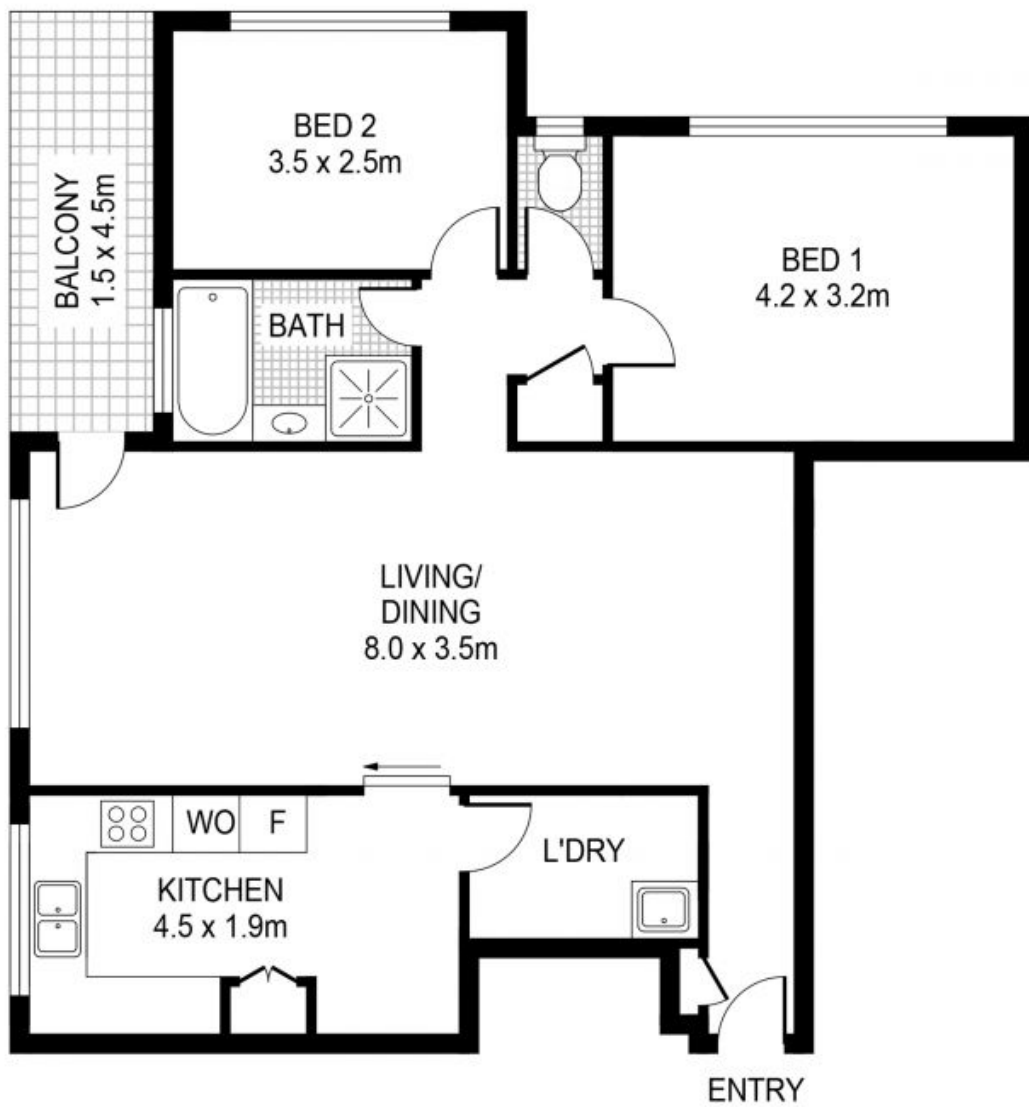
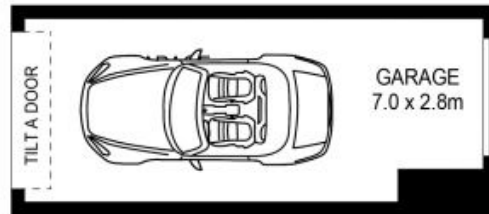
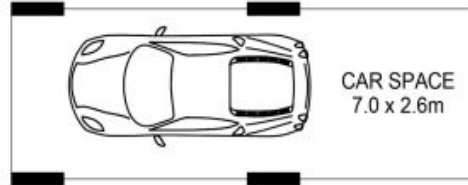
Water Rates: \$158.00 p/q

Strata Rates: \$1,114.00 p/q

Adam Scappatura Frank Settineri

0413 355 481

0414 889 319



PLANS SHOWN ONLY INDICATIVE OF LAYOUT. DIMENSIONS ARE APPROXIMATE.



2/1 Rokeby Road
Abbotsford

EST — 1979
time