



5/20 Bay Road Russell Lea, NSW

2 1 1

Waterside Living

A light and airy open design offering floating timber flooring throughout, well-equipped kitchen, split system air conditioning and sun-drenched balcony with water views.

Ideally located only a short stroll to all amenities including parks, bay, public transport, restaurants and cafes.

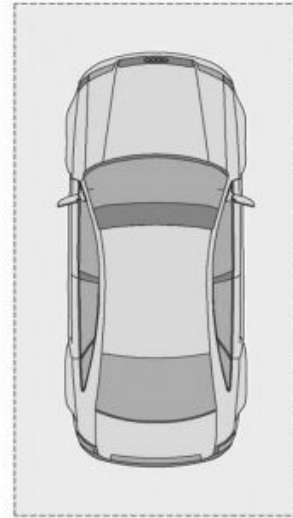
Features Include:

- Sunlit balcony with water views over Five Dock Bay
- Light & airy open design with floating timber floors
- 2 Bed, bathroom with full bathtub, car space on title
- Well-equipped kitchen with stainless steel appliances
- Short walk to parks, bay, shops, cafes and transport

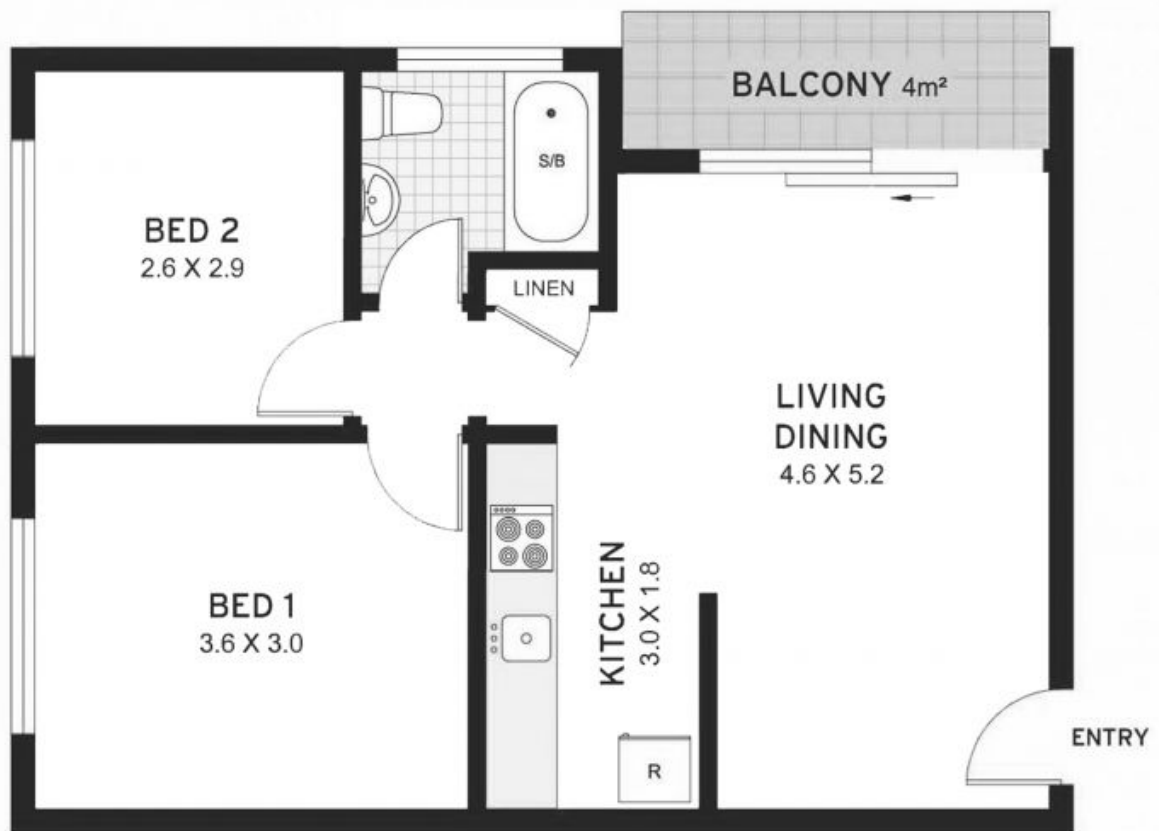
Price: DEPOSIT TAKEN
Available Date: 2021-07-13

Marco Giuliani
0412 206 189

Emanuel Koumis
0402 644 121



CARSPACE



PLANS SHOWN ONLY INDICATIVE OF LAYOUT. DIMENSIONS ARE APPROXIMATE.



5/20 Bay Rd

RUSSELL LEA

EST — 1979
time