



13/7 Bruce Street Ashfield, NSW



## Light Filled with District Views

Ideally located at the rear of a small security block of only 15 apartments with pleasant districts views, this spacious 2-bedroom apartment will make the perfect first home or investment.

Offering freshly painted interiors with open plan living spaces, tidy functional kitchen and bathroom, internal laundry and large balcony flowing from both the living and main bedroom. A massive undercover security car space which can easily fit 2 small cars plus a separate storage room just adds to the appeal of this desirable apartment.

Situated only a short walk to both Ashfield and Summer Hill Stations with all amenities including parks, Ashfield Mall and cafes nearby, this property is definitely one worth inspecting.

- Freshly painted light filled apartment with district views
- Tidy kitchen & bathroom, open plan living, internal laundry
- Small security building, built-in wardrobes & large balcony
- Large undercover security car space, separate storage room
- Short walk to both Ashfield and Summer Hill Train Stations
- All amenities nearby incl. Ashfield Mall, shops, cafes & parks

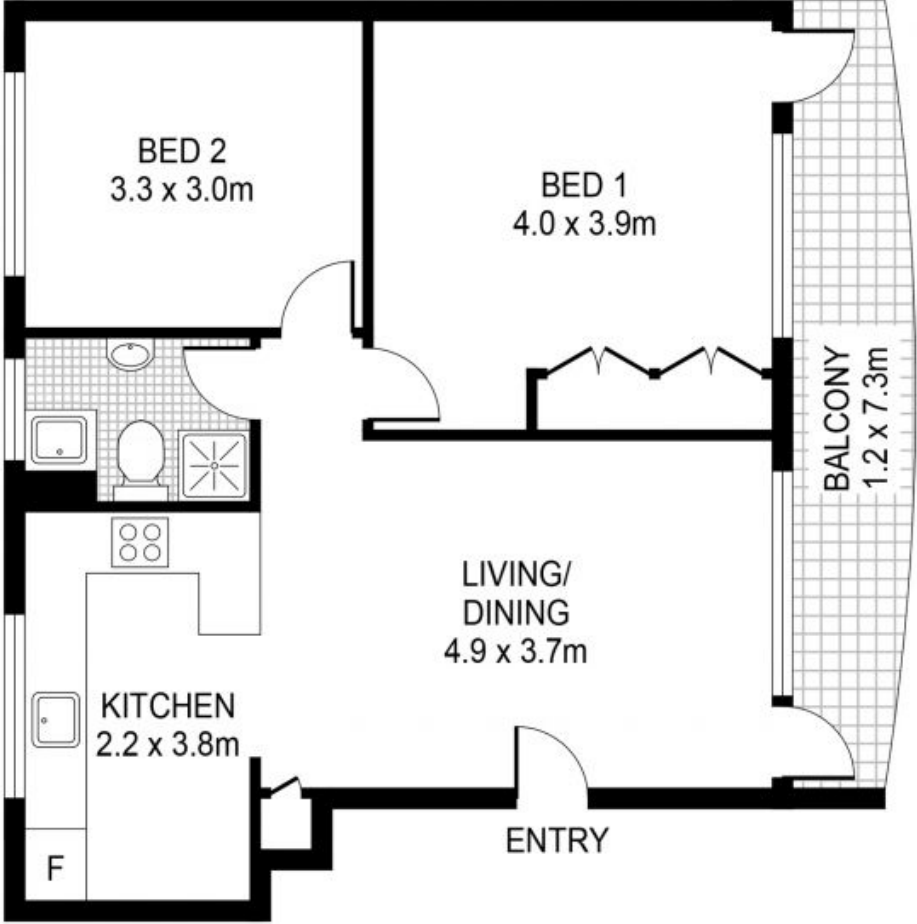
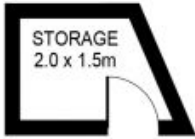
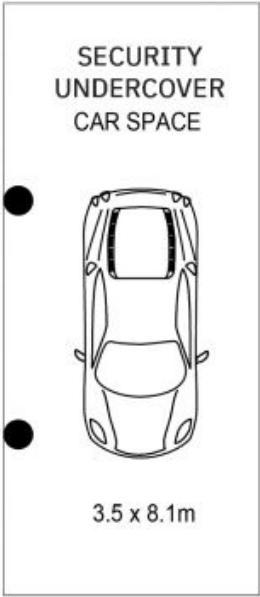
**Price:** SOLD | Time Realty  
**Council Rates:** \$354.00 p/q  
**Water Rates:** \$152.00 p/q  
**Strata Rates:** \$1,067.00 p/q

**Frank Settineri**

0414 889 319

**Adam Scappatura**

0413 355 481



PLANS SHOWN ONLY INDICATIVE OF LAYOUT. DIMENSIONS ARE APPROXIMATE.



13/7 Bruce Street  
ASHFIELD

EST — 1979  
time