



190 Marion Street Leichhardt, NSW



4



2



2

A classic haven with surprises of space, light & style

Behind the traditional facade of this attractive character residence lies a cleverly designed interior that's surprisingly spacious, bright and exceptionally private. Smartly reconfigured and extended to maximise the space and enhance natural light, it offers a unique two-level family home with generous proportions, modern finishes and a choice of private outdoor areas. This unique property is also set in a super convenient address that's walking distance to Market Place shops, local parks and the area's vibrant cafe lifestyle.

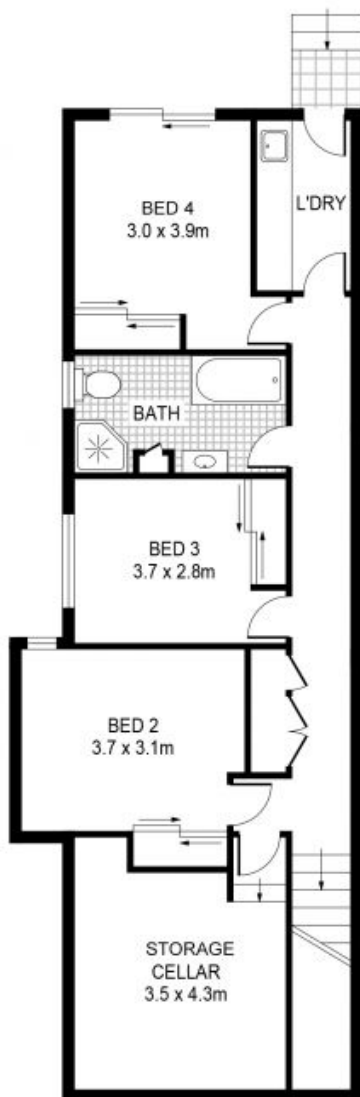
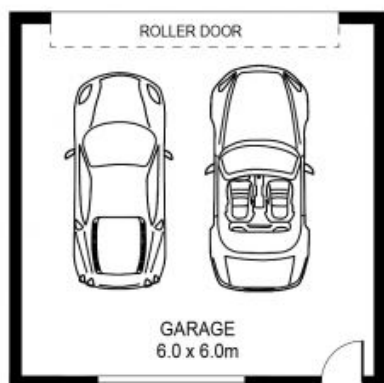
- Enter via a private and leafy North Facing entertainment courtyard
- A generous and versatile layout with bright open plan living space
- Private back garden includes entertainment space and level lawn
- Double lock-up garage with excellent storage & access from the rear
- 3 Downstairs bedrooms + an optional upstairs bedroom/media area
- Modern entertainer's kitchen with island bench & quality gas cooking
- Underfloor storeroom/workshop/cellar plus lots of built-in storage
- Ducted air-conditioning, two modern bathrooms and an extra WC

Price: SOLD Prior to Auction | Time Realty
Council Rates: \$407.00 p/q
Water Rates: \$165.00 p/q

Lambros MarkessinTime Realty

0407 788 777

9712 1188



GROUND FLOOR



FIRST FLOOR



SITE PLAN

PLANS SHOWN ONLY INDICATIVE OF LAYOUT. DIMENSIONS ARE APPROXIMATE.



190 Marion Street
LEICHHARDT

EST — 1979
time