



7/26 Pembroke Street Ashfield, NSW



Walk to the station. Newly renovated

Be quick to inspect this fantastic one bedroom apartment that is located in a sought after tree lined street within the beautiful Ashfield Park precinct.

It has been newly renovated with new floor boards and fresh paint. You will be impressed with the Gourmet kitchen with stone bench tops with stainless steel appliances including a dishwasher. further features include the extra-large & luxurious bathroom that also offers an internal laundry.

Features of this property include;

- Internal Laundry
- Large living area
- New gourmet kitchen with Caesar stone benchtops, stainless steel appliances including dishwasher.
- Modern bathroom with bathtub.
- Fresh paint with New floorboards
- Large lock up garage with storage

Located in a security block of only 12 units , in a fantastic location. Across the road from iconic Ashfield park offering all the conveniences that the park has to offer including shaded BBQ areas, children's playground and a fresh and peaceful environment.

Great transport options available, Ashfield train station only a short walk away, bus transport and an array of shopping options including Haberfield restaurant & shopping Village , Summer Hill shopping village and Ashfield mall are all within walking distance.

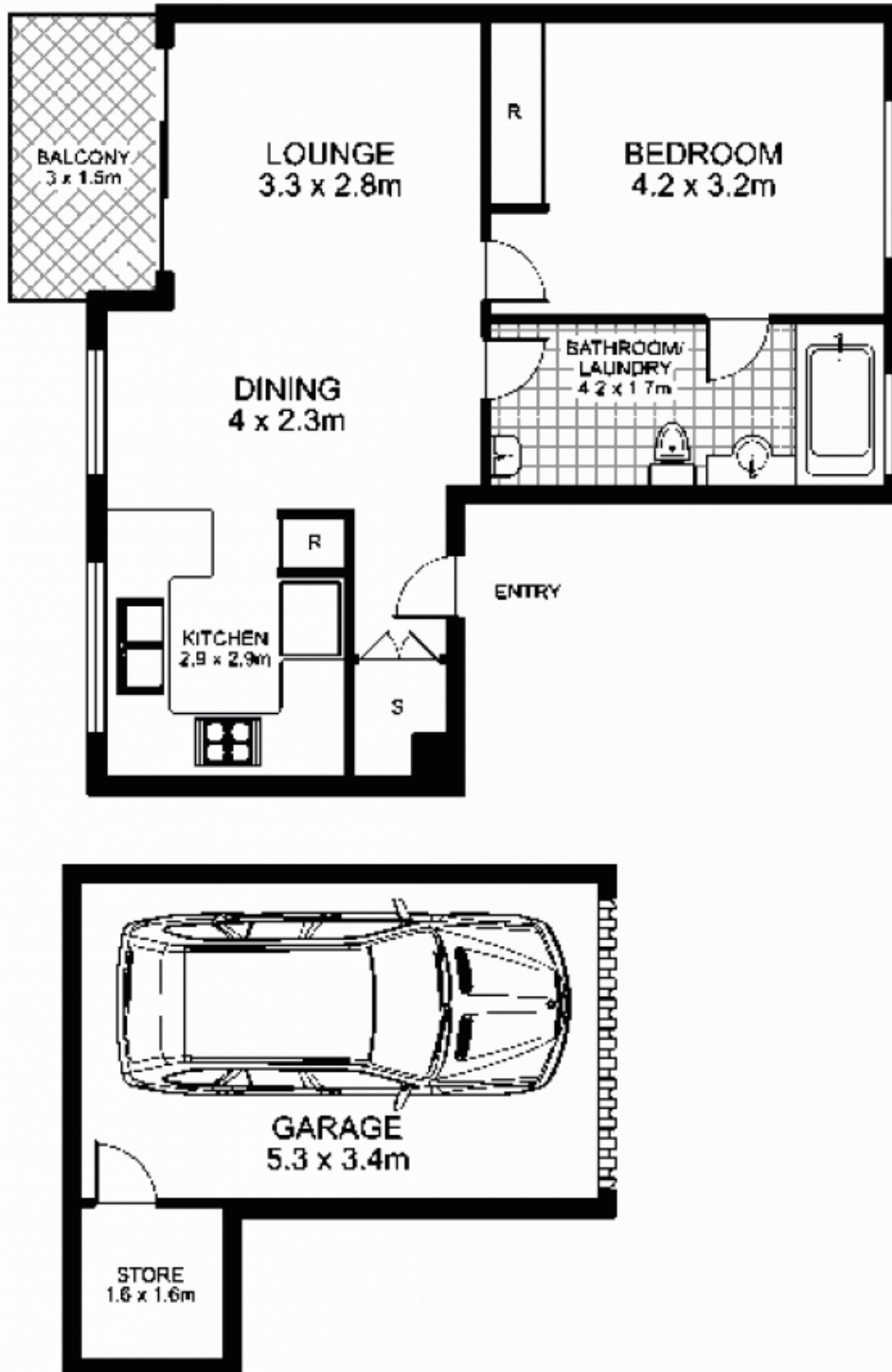
Be quick to inspect.

Price: \$420.00 pw
Available Date: 2021-05-12

Costa Athanassiou Emanuel Koumis

0402 644 121

**7/26 Pembroke St,
ASHFIELD**



Plans by
surroundpix
(Pty) Ltd
1300 30 32 40

This floor plan is intended as a guide only. Layout dimensions are approximate only. No representations or warranties of any nature whatsoever are given or intended. Any person using this information should rely on their own enquiries