



11/5 Bortfield Drive Chiswick, NSW



2



1



1

## Water Views from Every Room

Positioned in a highly sought-after peninsula enclave with picturesque views of the bay, this 2 bedroom apartment offers fresh interiors with generous living spaces and sunny North Easterly balcony. An ideal first home or investment this bright and airy apartment boasts a neat & tidy kitchen, built-in wardrobes, large bathroom, split system air conditioning and well organised internal laundry with plenty of storage.

With the benefit of a lock up garage with storage while only metres from ferry wharf, park, bus stop, village style shops and eateries, this property offers a magnificent lifestyle with the utmost convenience.

- Bright and Airy 2 bedroom apartment with water views
- Sunny North Easterly balcony, Air-con, internal laundry
- Spacious living areas, tidy kitchen and LUG plus storage
- Well maintained small block of 12 in a security building
- Moments from Ferry, buses, park, bay, shops and cafes

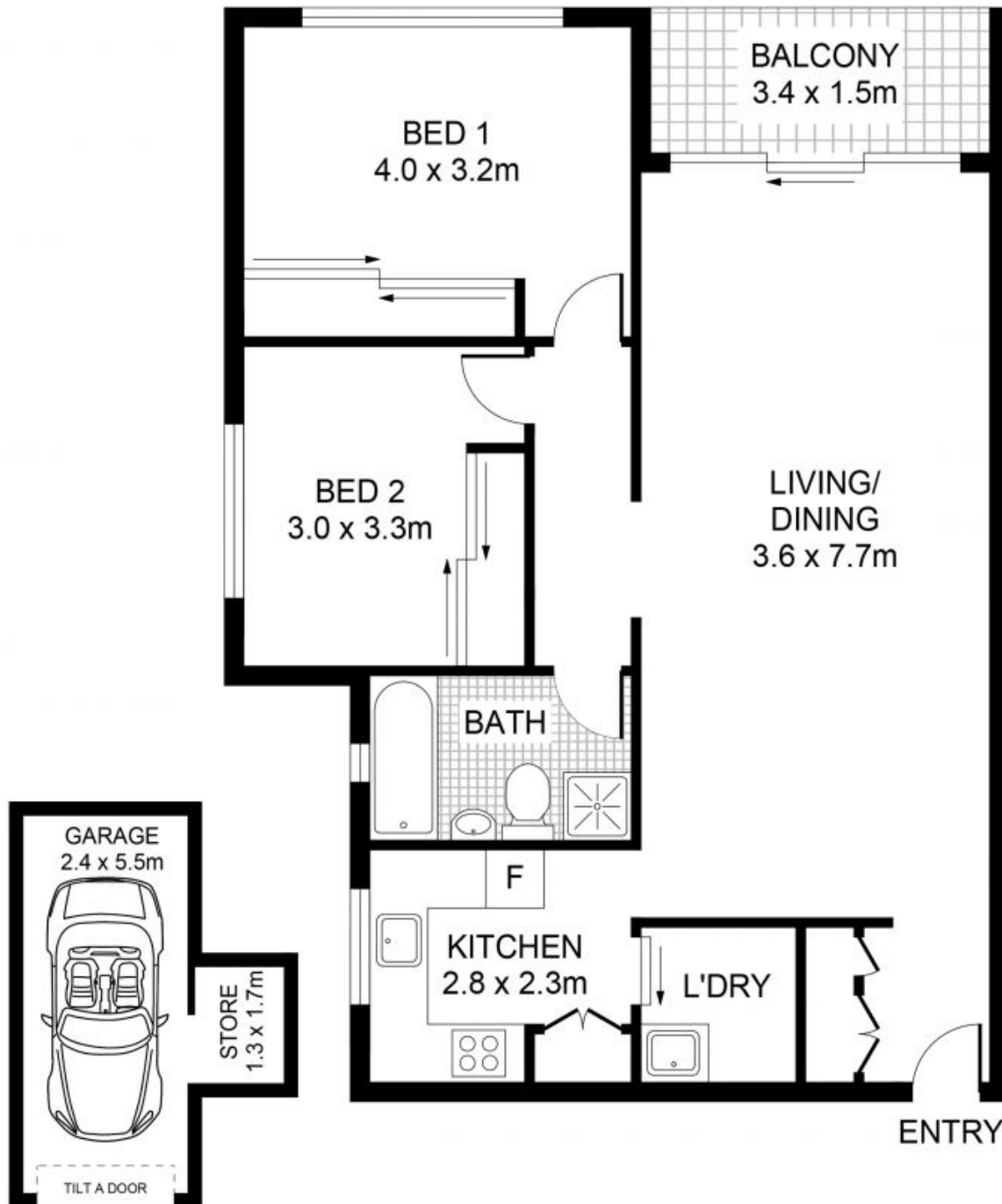
**Price:** SOLD | Time Realty  
**Council Rates:** \$288.00 p/q  
**Water Rates:** \$146.00 p/q  
**Strata Rates:** \$1,093.46 p/q

**Frank Settineri**

0414 889 319

**Adam Scappatura**

0413 355 481



PLANS SHOWN ONLY INDICATIVE OF LAYOUT. DIMENSIONS ARE APPROXIMATE.



11/5 Bortfield Drive  
**CHISWICK**

EST — 1979  
**time**