



12/168-172 Hampden Road Abbotsford, NSW



2



1



2

## Private & Leafy Surrounds

A spacious 2 bedroom apartment perfectly positioned within a short stroll to all amenities.

With well appointed Kitchen and bathroom, this larger than average apartment offers spacious and light filled interiors, floating timber floors and 2 large bedrooms both with built-in wardrobes. The open and airy living space flows out to a sunny balcony offering a very private and leafy outlook.

Other extras include a large internal laundry, air conditioning, separate toilet and double secure car space offering plenty of storage space.

Perfectly positioned at the rear of a secure building with low levies while only moments to all amenities including public transport, schools, parks, ferry wharf, great eateries and cafes of both Abbotsford and Wareemba Shopping Villages.

- Spacious 2 bed apartment with private & leafy outlook
- Bright & airy open living area flows out to sunny balcony
- Quality kitchen and bathroom, aircon, internal laundry
- Double secure car space, security block with low levies
- Short walk to bay, parks, shops, cafes & public transport

**Price:** SOLD | Time Realty

**Council Rates:** \$289.00 p/q

**Water Rates:** \$145.00 p/q

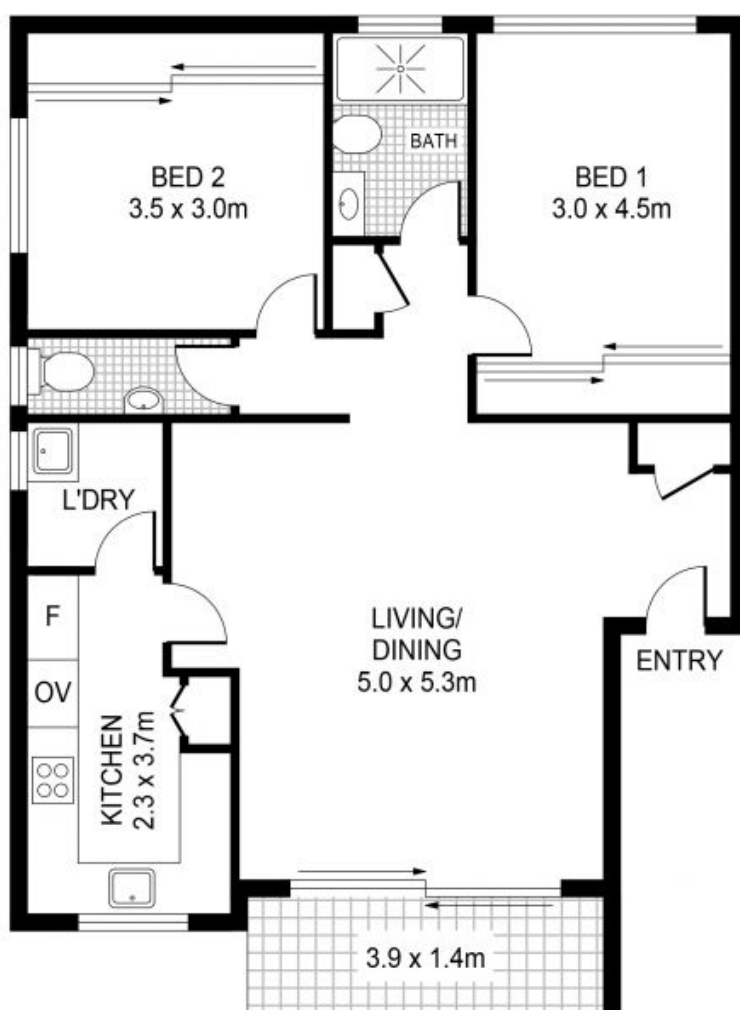
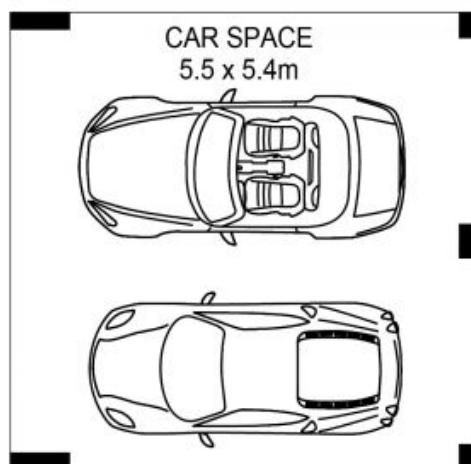
**Strata Rates:** \$812.75 p/q

**Frank Settineri**

0414 889 319

**Adam Scappatura**

0413 355 481



PLANS SHOWN ONLY INDICATIVE OF LAYOUT. DIMENSIONS ARE APPROXIMATE.



12/168-172 Hampden Road  
**ABBOTSFORD**

EST — 1979  
**time**