



35/38 Shoreline Drive Rhodes, NSW



2



2



1

## SOLD - Boutique Waterfront Complex ~ Low Levies

Modern 2 bedroom, 2 bathroom apartment located in a sought after waterfront complex. Offering open plan living, modern kitchen with stone bench tops, 2 spacious bedrooms with built in wardrobes and ensuite in main.

Sunny balcony with Easterly views over the park, while only moment from local shops, cafes, restaurants and waterfront walkways. With the bonus of Rhodes train station and Rhodes Waterside shopping centre both a mere 10 minute walk (approx.) away.

A perfect first home or ideal investment.

- Modern 2 bed, 2 bath apartment with low levies
- Quality kitchen with stone benchtops, air con
- Spacious living areas, balcony with park views
- Built-in wardrobes, ensuite, security car space
- Close to cafes, restaurants, parks & waterfront
- Short walk to Rhodes Waterside & train station

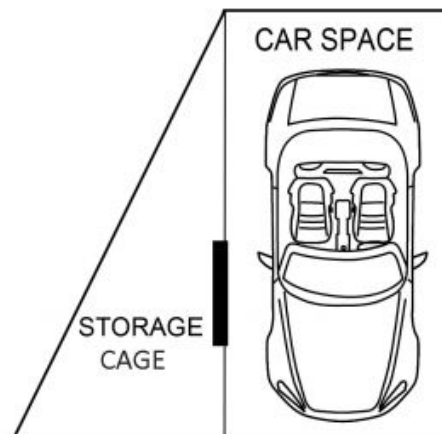
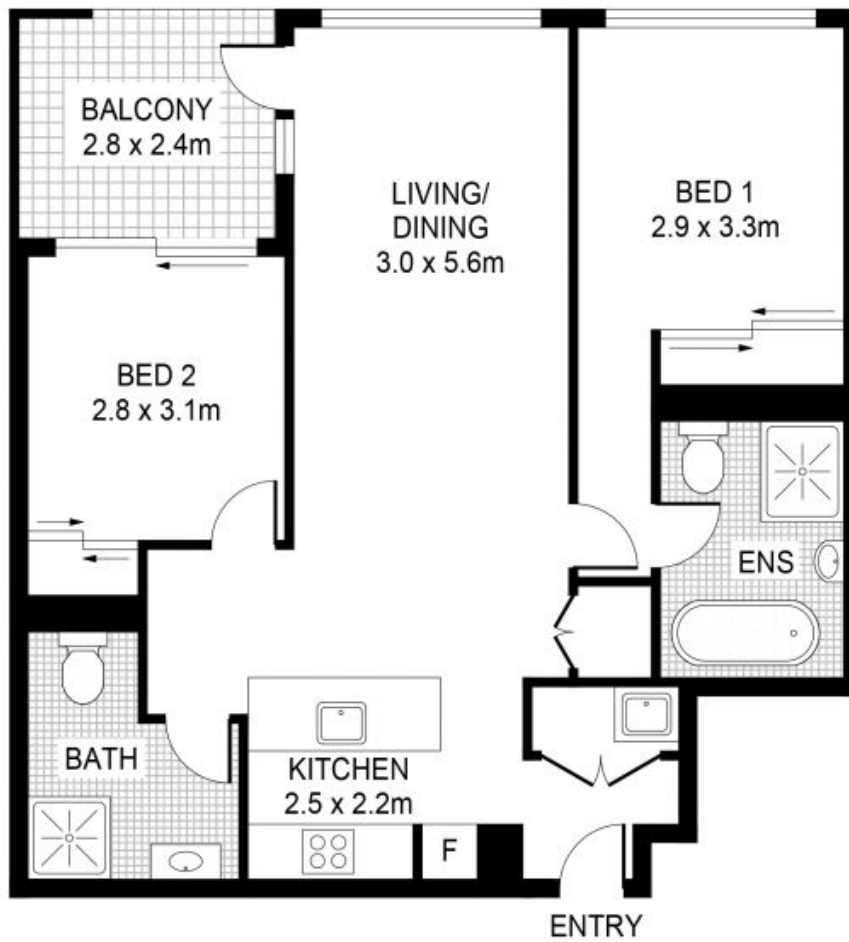
**Price:** SOLD | Time Realty  
**Council Rates:** \$288.00 p/q  
**Water Rates:** \$145.00 p/q  
**Strata Rates:** \$695.59 p/q

**Frank Settineri**

0414 889 319

**Adam Scappatura**

0413 355 481



PLANS SHOWN ONLY INDICATIVE OF LAYOUT. DIMENSIONS ARE APPROXIMATE.



35/38 Shoreline Drive  
RHODES

EST — 1979  
**time**