



4/184 Hampden Road Abbotsford, NSW



2



1



2

## Stunning two bedroom townhouse

Be impressed from the moment you walk into this exceptional 2 bedroom townhouse. With quality fixtures and fittings throughout that include tiled flooring downstairs, modern kitchen with stone bench tops, spacious dining & living areas that flows out to a gorgeous courtyard perfect for outdoor entertaining.

Upstairs consists of 2 large bedrooms main with balcony, large main bathroom, internal laundry, all with the convenience of a powder room downstairs. Includes 2 security car space with storage room, within a boutique block with low levies.

Only a short walk to Wareemba Village and an array of transport options as well as parks & waterways.

### Features Include:

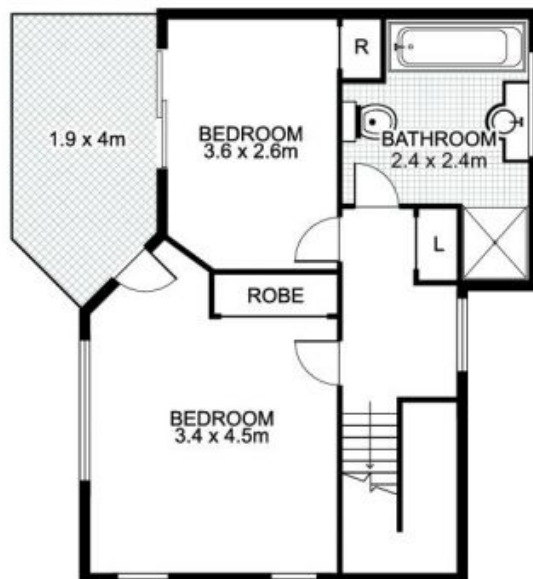
- Exceptional 2 bedroom townhouse with quality fixtures
- Modern kitchen with stone bench tops, large bathroom
- Spacious open plan living area flowing onto courtyard
- 2 Car spaces plus storage in boutique block with low levies
- Stroll to Wareemba Village, transport, parks & waterways

**Price:** DEPOSIT TAKEN  
**Available Date:** 2021-03-01

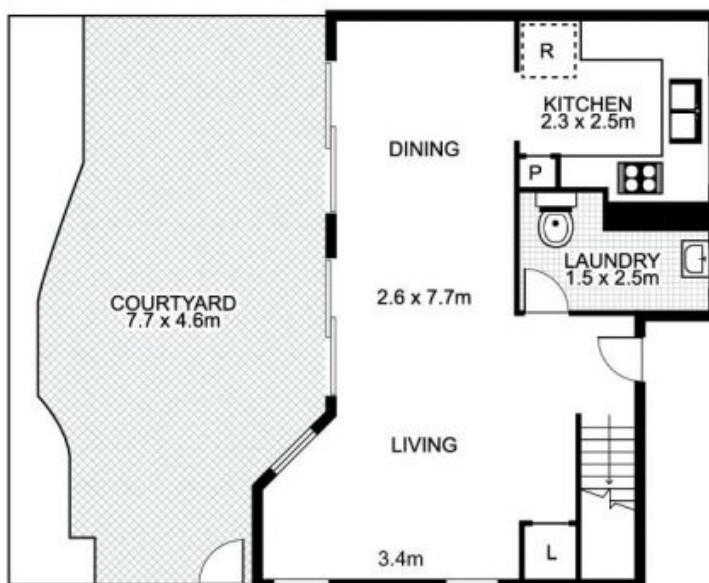
**Costa Athanassiou Emanuel Koumis**

0402 644 121

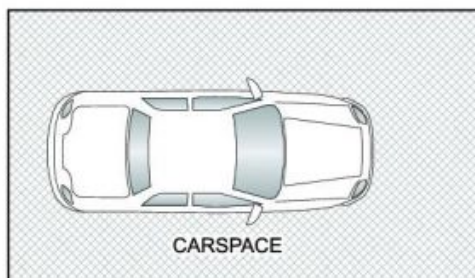
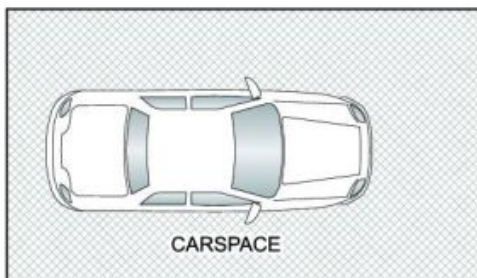
# 4/184 Hampden Road, ABBOTSFORD



UPPER LEVEL



LOWER LEVEL



This floor plan is intended as a guide only. Layout dimensions are approximate only. No representation or warranties of any nature whatsoever are given or intended. Any person using this information should rely on their own enquiries.