



10/5-7 Park Road Five Dock, NSW



2



2



2

Location, Location, Location

Peacefully set in a secure, well-maintained full brick complex, this 2 bed townhouse is a great alternative to apartment living.

Features Include:

- Bright open plan lounge/dining area flows to rear courtyard
- Large kitchen with stone bench tops, double lock-up garage
- Two bedrooms both appointed with mirrored built-in robes
- 2 Luxurious bathrooms, North facing balcony off main bed
- Freshly updated with new floating floors, new carpet & paint
- Great access to shops, cafes, restaurants, schools & transport

Price: DEPOSIT TAKEN

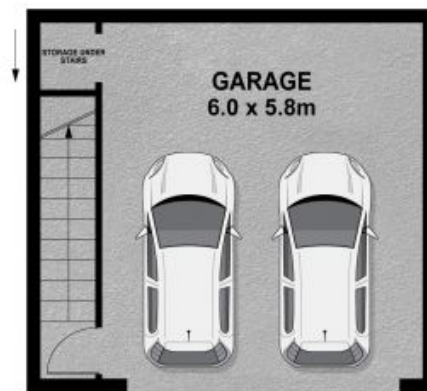
Available Date: 2021-01-16

Costa Athanassiou Emanuel Koumis

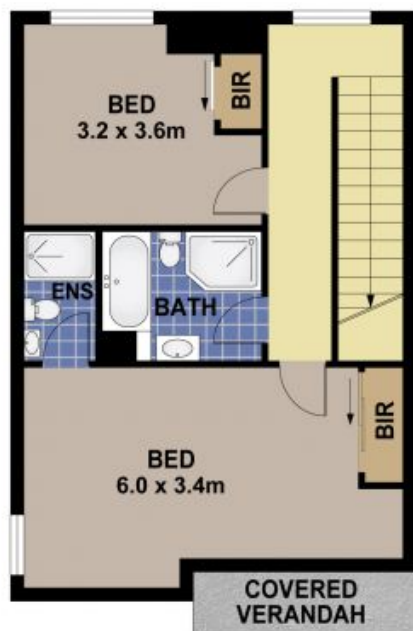
0402 644 121



FIRST FLOOR



UNDERGROUND LEVEL



SECOND FLOOR

UNIT 10/5-7 PARK ROAD, FIVE DOCK



This plan is for illustrative purposes only and dimensions are approximate. It does not constitute part of any legal document for the sale or lease of this property. Every precaution has been taken to verify the accuracy of the above details. However prospective purchase are advised to make their own enquiries.

EST. 1979
time