



5 Melbourne Street Concord, NSW



2



2



2

## SOLD - Perfect for Entertaining

Filled with character and charm this fully renovated 2 bedroom Semi-detached home has great space for the growing family. Boasting a gourmet kitchen, huge open plan lounge and dining area that flows seamlessly to a spacious alfresco, just perfect for outdoor entertaining while overlooking a private and leafy backyard.

This home also has the added bonus of a man cave with its own private bathroom ideal for anyone looking for a work space/studio. The property also offers a generously sized block of approximately 374 sqm with side driveway and off street parking for at least 2-3 cars.

Conveniently located close to all amenities including buses, shops, schools and parks. With the convenience of Strathfield Train Station, Strathfield Plaza and the vibrant Concord Shopping Village with all its very popular cafes and restaurants only a 10-20 minute walk away.

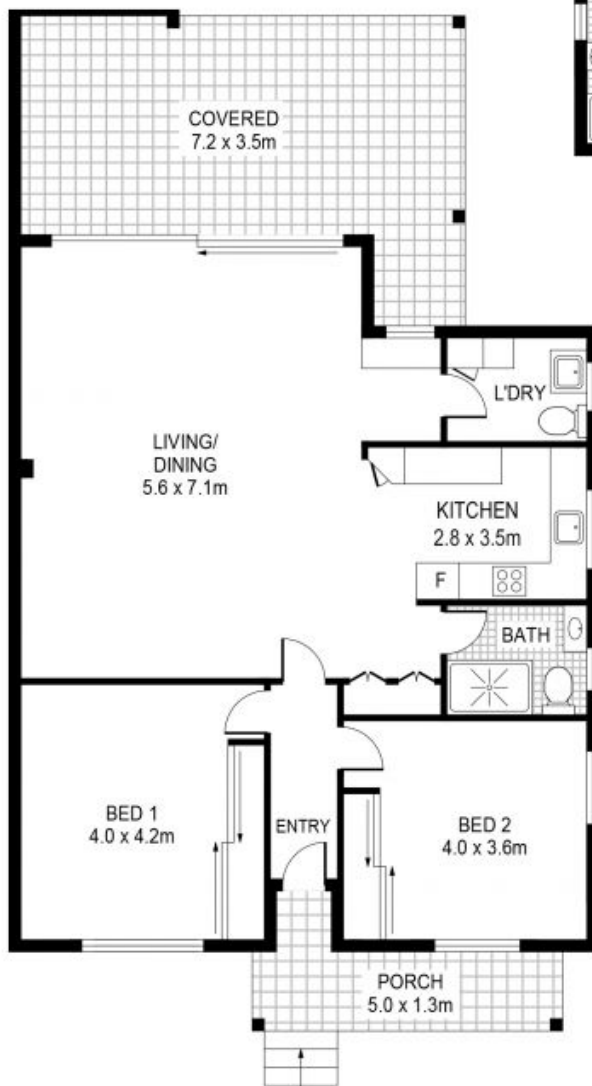
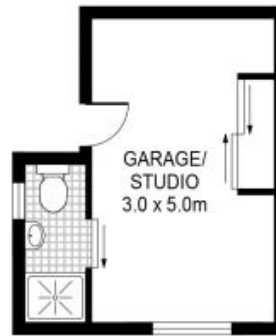
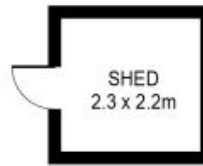
- Renovated 2 bedroom semi with wide driveway access
- Approx. 374 sqm block with sunny & leafy rear garden
- Character filled with high ceilings, entertaining alfresco
- Renovated kitchen, renovated bathroom, side driveway
- Located close to schools, parks, transport, shops & cafes

**Price:** SOLD | Time Realty  
**Council Rates:** \$289.00 p/q  
**Water Rates:** \$148.00 p/q

**Adam Scappatura** **Frank Settineri**

0413 355 481

0414 889 319



PLANS SHOWN ONLY INDICATIVE OF LAYOUT. DIMENSIONS ARE APPROXIMATE.



5 Melbourne Street  
**CONCORD**

EST — 1979  
**time**