



17/48 Edwin Street Mortlake, NSW



4



3



2

## SOLD by Lambros Markessinis - EXCLUSIVE LUXURY TOWNHOUSE

"WELCOME TO KINGFISHER COVE"

Price:

SOLD

This well proportioned, Architect designed town home combines multiple living zones, a separate granny flat, generous bedrooms, fabulous indoor/outdoor spaces which flow providing a private family oasis.

Comprising four bedrooms + granny flat main with en-suite, family bathroom, lounge/dining and separate study the large kitchen, meals and family area opens onto a manicured courtyard. The top level also provide entertaining terrace with a fantastic outlook.

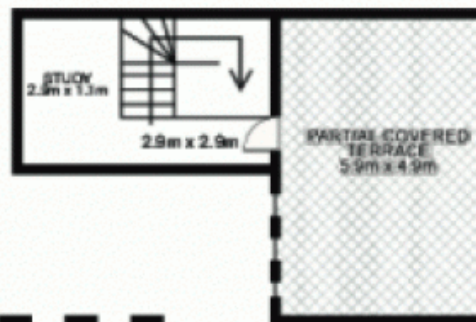
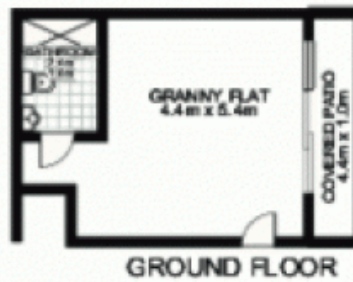
Features of the home include high ceilings, ducted heating and cooling throughout, security entrance/alarm system, double garage with internal access and 3.5 bathrooms in total.

Located on majors bay and a walk away from shops and parkland and offering public transport at the end of the street. Generous sized family properties combining such sought after features are rare, so call to inspect today!

**Lambros Markessinis**

0407 788 777

# 17/48 Edwin Street, MORTLAKE



This floor plan is intended as a guide only. Layout dimension are approximate only. No representation or warranties of any nature whatsoever are given or intended. Any person using this information should rely on their own enquiries.



Plans by  
**surroundpix**  
com.au  
1300 30 32 40