



21 Mooculta Street Russell Lea, NSW



3



2



2

## SOLD - Premium Location

Immaculately presented, this heart warming Federation home with a rare block size of 696 sqm approx and a wide frontage of 15.24 metres is located in prime location and has a welcoming air of period charm & family warmth. Presented with high ceilings and wide entrance hall, this engaging treasure enjoys three bedrooms + sunroom or study, central & modern stone kitchen with double oven, dishwasher and breakfast bench, formal lounge, oversize & separate living & dining room which opens to large and covered entertaining terrace. The sun filled yard offers the perfect backdrop for your own private garden oasis. The homes further features include two luxurious bathrooms, internal laundry. This captivating home also ducted air conditioning as well as split system air conditioning units, security alarm and secure off street parking for two cars. With an enviable location in the heart of Russell Lea this classic residence has countless possibilities ready to explore, only a short stroll from public transport, shops, water ways and cafes. This is an opportunity not to be missed.

**Price:**

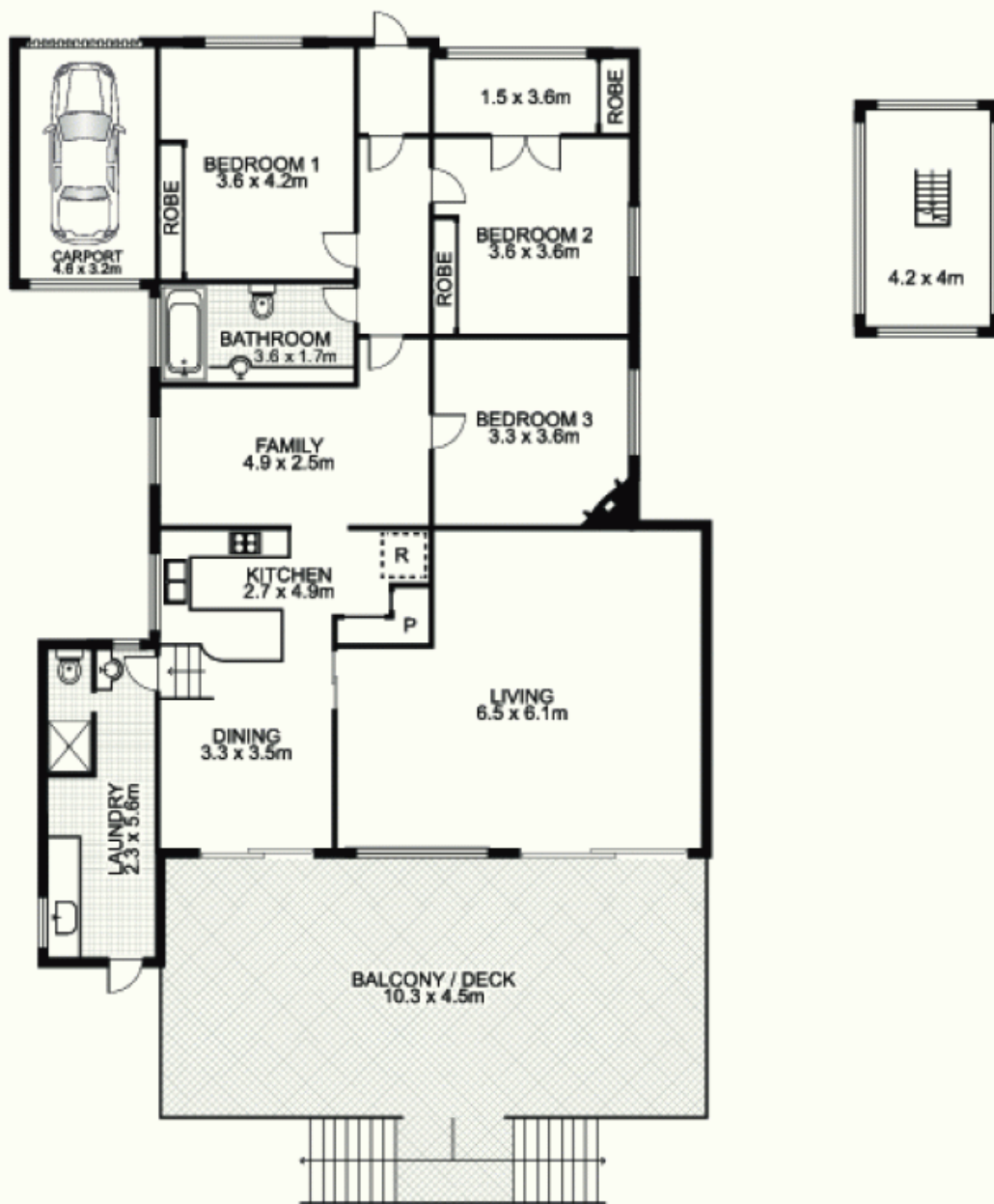
SOLD

- Solid brick 3 bedroom Federation home
- Rare and large block of 696 sqm approx
- Oversize living areas, perfect for entertaining
- Wide driveway access to garage and rear yard
- Close to shops, parks, water ways & transport

**Adam Scappatura**

0413 355 481

# 21 Mooculta Street, RUSSELL LEA



Plans by  
**surroundpix**  
COM.AU  
1300 30 32 40

This floor plan is intended as a guide only. Layout dimension are approximate only. No representation or warranties of any nature whatsoever are given or intended. Any person using this information should rely on their own enquiries.