



1002/11 Australia Avenue Sydney Olympic Park, NSW



2



2



1

" Great views , great locations"

Overlooking parklands with a full view of Olympic Park is this impressive contemporary near new 2 bedroom apartment. Situated on the 10th floor in a modern security complex offering 2 large bedrooms with built-ins and balcony access, stylishly designed main bathroom and beautifully appointed modern gas kitchen with open plan living areas.

Price:

\$658,888

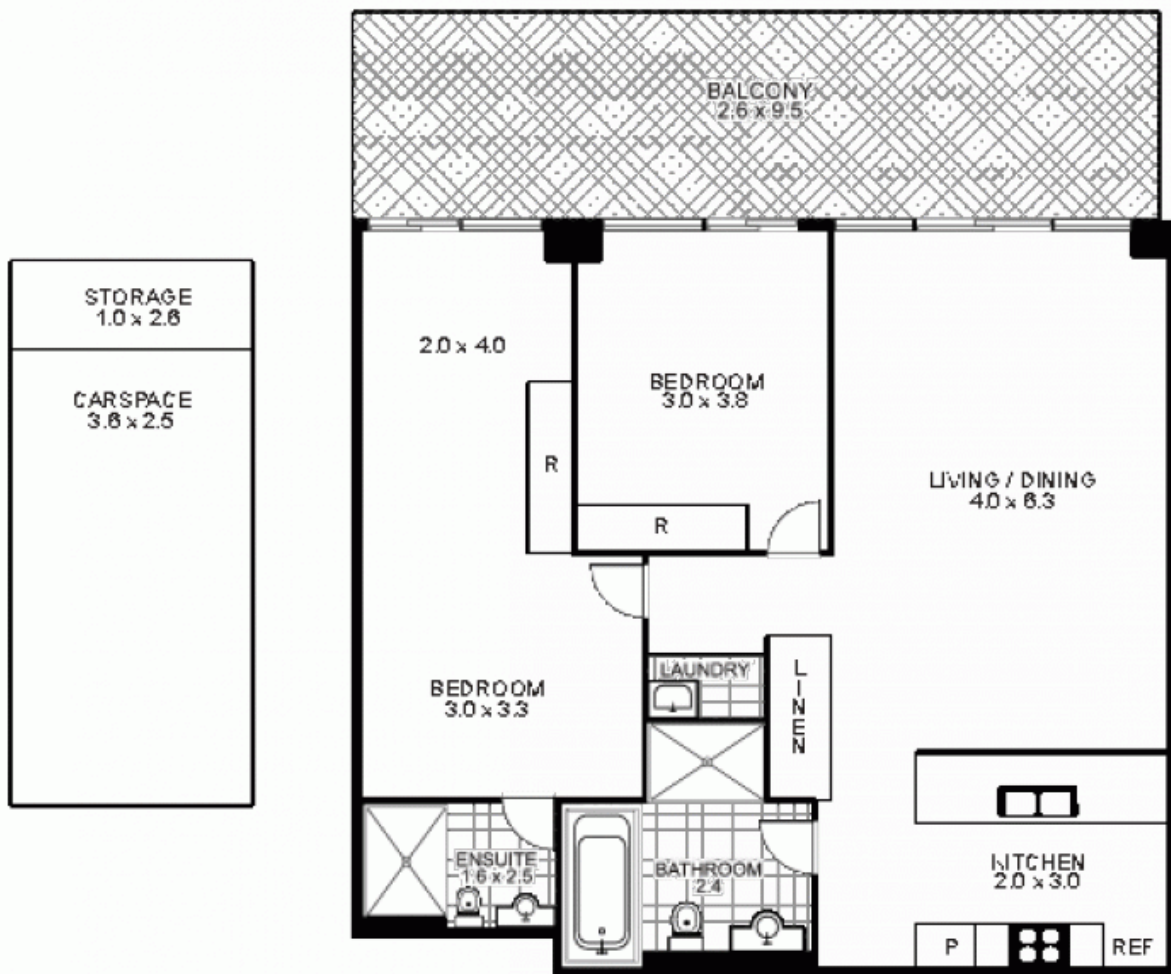
If you enjoy an active lifestyle, there is immediate access to sporting facilities. Here is your opportunity to live in the heart of the thriving Sydney Olympic Park, within metres of public transport, shopping facilities, cafes, restaurants and bars or the perfect investment opportunity.

- Stainless Gas cooktop, microwave and dishwasher included
- Laundry space with washer / dryer combo included
- Built in wardrobes to all bedrooms & ensuite to main
- Huge outdoor entertaining area with spectacular views
- Car space in security basement with lock up storage
- Train station, buses & sporting facilities only metres away
- Cafes, restaurants and bars catering to suit all tastes

Lambros Markessinis

0407 788 777

**1002/11 Australia Avenue,
Sydney Olympic Park**



This floor plan is intended as a guide only. Layout dimensions are approximate only. No representation or warranty of any nature whatsoever is given or intended. Any person using this information should rely on their own enquiries.



Plans by
surroundpix
com.au
1300 30 32 40