



26 Grove Street Lilyfield, NSW



2



1



1

## SOLD - Picture Perfect

Beautifully positioned on an elevated setting with an abundance of warmth and natural light, this stylishly renovated semi offers a blend of modern finished and charming character throughout. Displaying beautiful polished hardwood floors, 2 double bedrooms with built in wardrobes, renovated bathroom with spa and cosy gas fireplace in living room. The modern kitchen features stone bench tops, glass splashback and quality Miele appliances. The living area flows easily out through bi-fold doors to a North Easterly rear garden perfect for outdoor entertaining. Other extras include attic storage and rear lane access to off street parking. Enjoys an exceptionally convenient street setting, an easy stroll to the light rail and bus and walking distance to Norton Street's fine eateries, local shops and schools

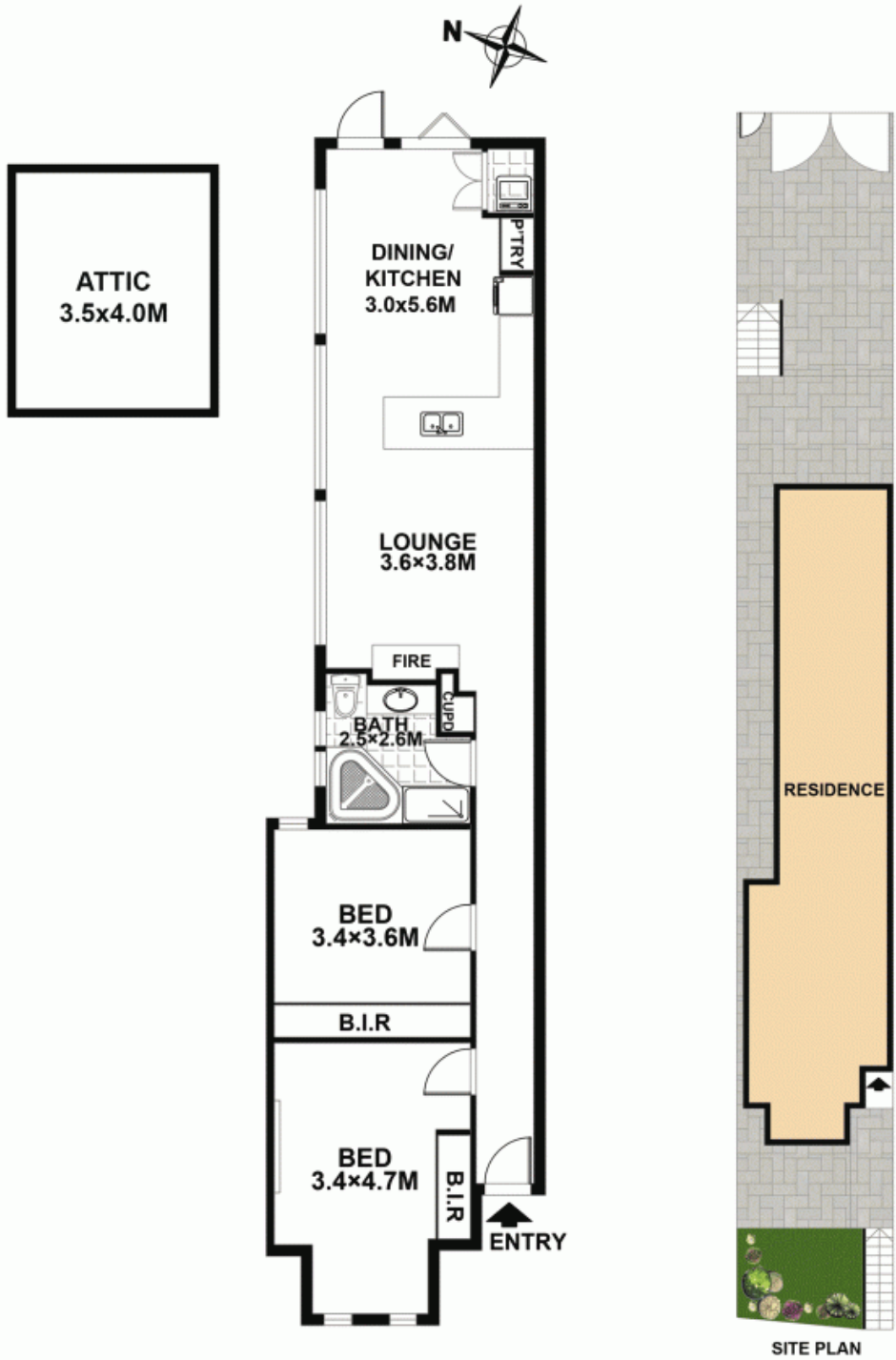
**Price:**

**SOLD!**

- Fully renovated 2 bedroom semi with rear lane access
- Quality kitchen with stone bench tops & Miele appliances
- High ceilings, hardwood floors, spa, gas fireplace, attic
- North Easterly rear garden with elevated street presence
- Located short stroll to light rail and all amenities

**Frank Settineri**

0414 889 319



**26 Grove Street, Lilyfield**

Disclaimer: Floor plans and site plans are intended as a guide only. They are not part of any legal document or title and are subject to errors, omission, and inaccuracies and should not be used as reference. Sizes and dimensions are approximate only. Interested parties should make their own enquiries.

Floor plan by: TouchIn Media