



10 Bay Road Russell Lea, NSW



2



1



1

## SOLD PRIOR TO AUCTION - Stunning Water & Parkland Views, DA approved plans

North-easterly waterviews, prized location & affordable. With an exclusive outlook from a rare elevated position, this cosy 2 bedroom home captures breathtaking views over Five Dock Bay and Russell Park, with the Gladesville bridge as a backdrop. The character-filled cottage currently offers polished timber floors, tidy and functional kitchen and bathroom, cosy lounge room with separate dining. The dining and kitchen areas flow beautifully out to a large terrace style balcony enjoying the gorgeous views. Other features include undercover parking, plenty of under-house storage, easy-care north-facing yard, and Solar Energy panels on the 60c rebate scheme.

**Price:**

SOLD PRIOR TO AUCTION

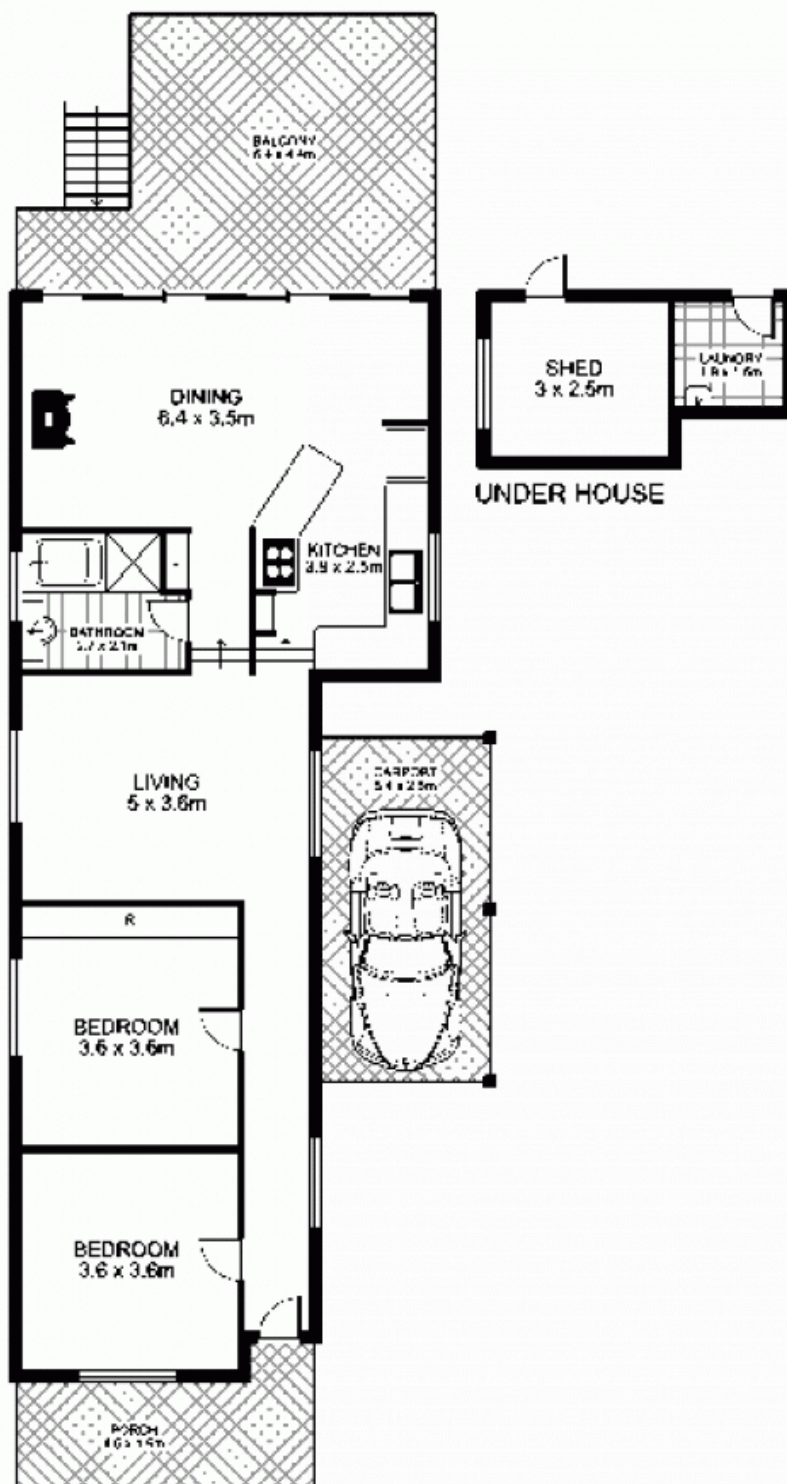
Move straight in, renovate or build your dream home, with DA approved plans for an architect-designed 3-4 bedroom home available for inspection. Easy walk to all amenities including bus, ferry, local shops, parks and the beautiful water's edge.

- Cosy 2 bed cottage with stunning North Easterly views
- Elevated position, polished timber floors, solar energy.
- Large terrace style balcony, carport, under house storage
- DA approved plans for an impressive 3 level home
- Easy walk to all amenities incl. public transport, parks and bay

**Frank Settineri**

0414 889 319

# 10 Bay Road, RUSSELL LEA



This floor plan is intended as a guide only. Layout dimensions are approximate only. No representations or warranties of any nature whatsoever are given or intended. Any person using this information should rely on their own enquiries