



8/13 Bortfield Drv Chiswick, NSW



2



2



1

SOLD - Affordable Luxury Living by the Bay

Offering an effortless bayside lifestyle, this immaculately maintained two bedroom two bathroom apartment boasts natural light with open plan living spaces and is ideally located in a tightly held well-kept complex with beautiful water views and quality features throughout. Boasting 2 generously sized bedrooms, main with built-in wardrobe and ensuite, modern kitchen with stone bench tops and quality stainless steel appliances. Both bathrooms have been stylishly renovated with main featuring a luxurious spa bath. Other convenient features include split system air conditioning, internal laundry and large lock up garage. Perfectly positioned in a waterfront building with pool and park and Ferry wharf directly next door. With all amenities only moments away, this apartment will appeal to young home buyers or can be an easy-care investment opportunity with strong rental demand.

Price:

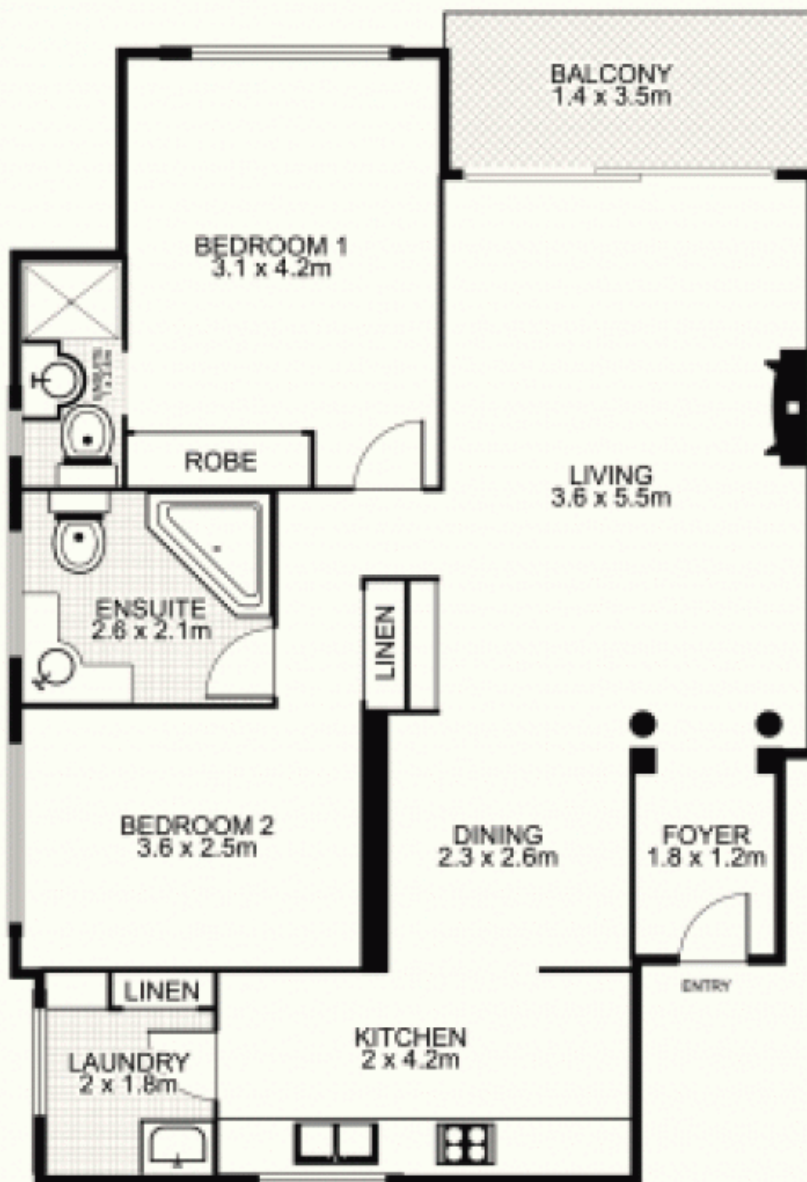
SOLD

- Modern 2 bed 2 bath apartment in waterfront complex
- Light filled interiors, balcony with water views, pool
- Renovated kitchen & bathrooms, spa, internal laundry, air con
- Well kept low maintenance block with low levies & LUG
- Close to all amenities including ferry, bus, shops, parks & bay

Frank Settineri

0414 889 319

**8/13 Bortfield Drive,
CHISWICK**



This floor plan is intended as a guide only. Layout, dimensions and approx mate only. No representation or warranties of any nature whatsoever are given or intended. Any person using this information should rely on their own enquiries.