



2/12 Bortfield Drv Chiswick, NSW



2



1



1

## SOLD - Water & Bridge Views

Positioned in a quiet peninsula enclave with picturesque views of Gladesville Bridge and the bay this 2 bedroom apartment offers fresh interiors with generous living space and sunny balcony. An ideal first home or investment this bright and airy apartment features spotted gum hardwood floating timber floors, modern kitchen, built-in wardrobes, split system air conditioning, and well organised internal laundry with plenty of storage. With undercover parking and only metres from ferry wharf, bus stop, village style shops and eateries makes this property the perfect opportunity to move into a very sought after location.

**Price:**

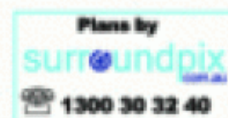
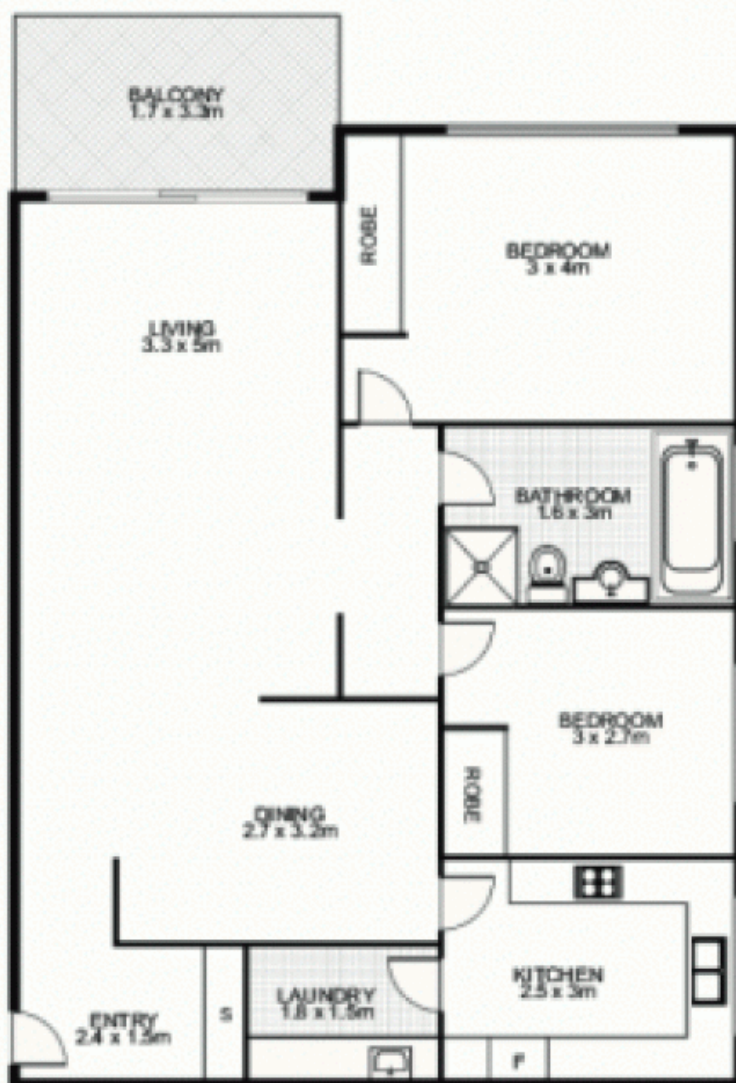
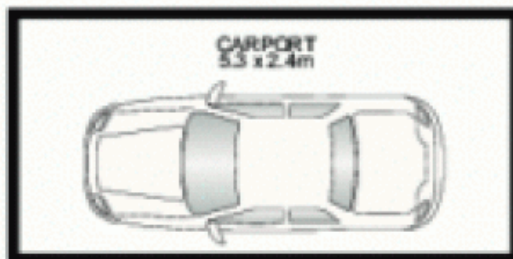
SOLD

- Modern & bright 2 bedroom apartment with water views
- Sunny balcony, hardwood floors, Air-con, internal laundry
- Spacious living area, modern kitchen, undercover parking
- Well maintained security building with low strata levies
- Moments from Ferry, bus, bay, village shops & eateries

**Frank Settineri**

0414 889 319

**2/12 Bortfield Drive,  
CHISWICK 2046**



This floor plan is intended as a guide only. Layout dimensions are approximate only. No representation or warranties of any nature whatsoever are given or intended. Any person using this information should rely on their own enquiries.