



11/335-337 Blaxland Road Ryde, NSW



2



1



1

## SOLD - Over 55's Living at its best - Blaxland Gardens

This purpose built modern apartment offers a great opportunity for astute investor or savvy purchaser. Offering two bedrooms with built in wardrobes, combined lounge and dining rooms, modern kitchen with granite bench tops and stainless steel gas appliances complimented by a fantastic dedicated outdoor entertaining balcony and large pergola. Access to the apartment, ground floor common recreation room, mature gardens and basement car parking is provided by both stairs and lift access. Public transport is on your doorstep providing a direct link to the Top Ryde shopping precinct and surrounding suburbs.

Make the right investment decision and arrange a property inspection today.

- \* Elevated first floor two bedroom apartment with built-in robes
- \* Combined lounge and dining rooms with split cycle air conditioning
- \* Modern kitchen with granite bench tops & stainless steel gas appliances
- \* Fantastic tiled outdoor entertaining balcony covered with pergola
- \* Security building and grounds with secure under building car space

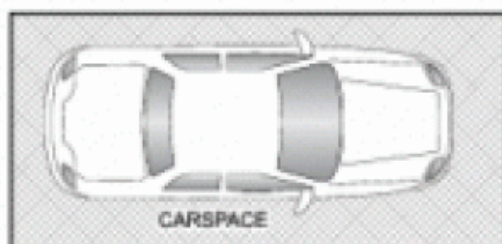
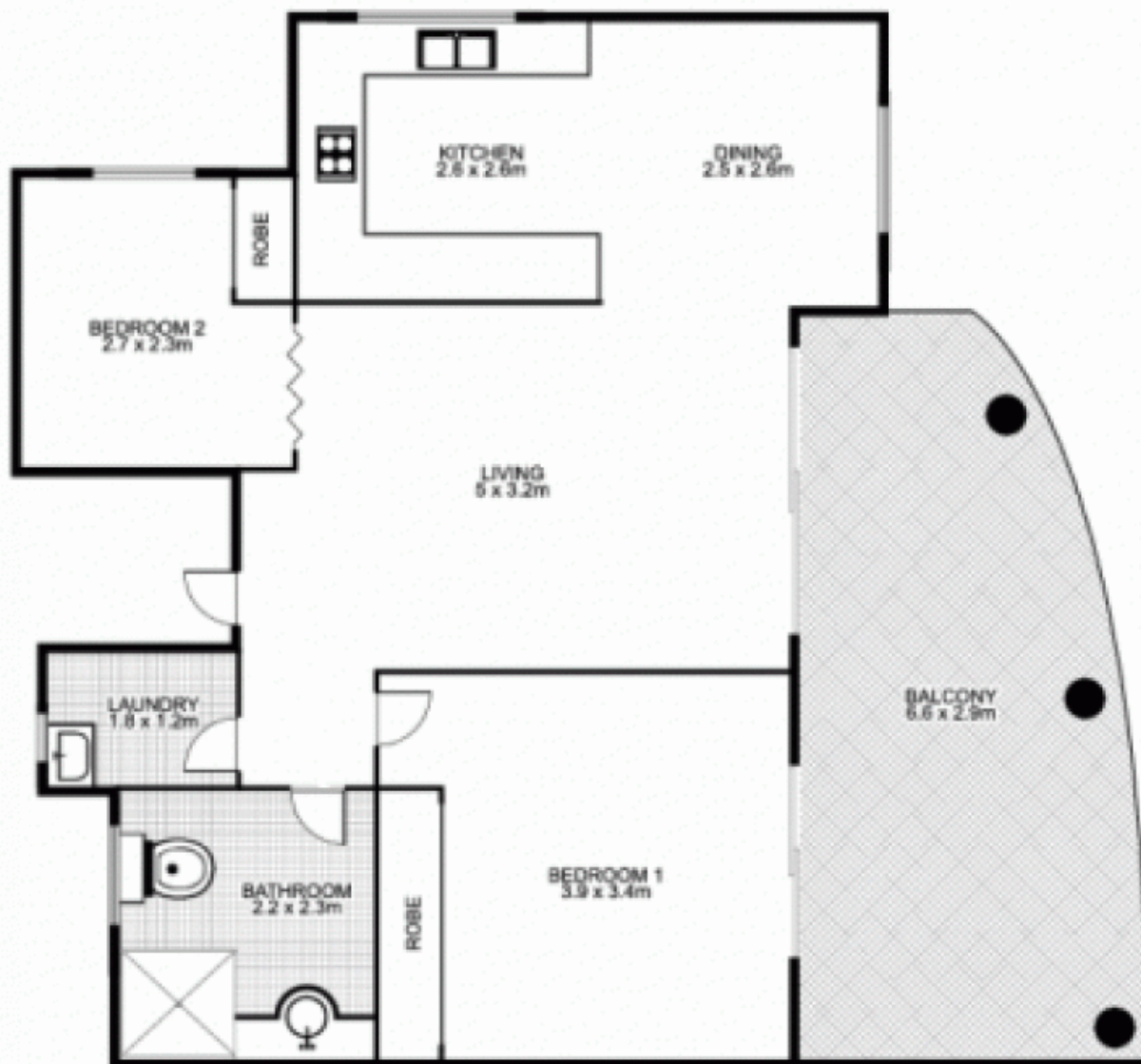
**Price:**

SOLD

**Time Realty**

9712 1188

**11/335-337 Blaxland Road,  
RYDE**



This floor plan is intended as a guide only. Layout dimensions are approximate only. No representation or warranty of any nature whatsoever is given or intended. Any person using this information should rely on their own enquiries.