



26/335-337 Blaxland Road Ryde, NSW



2



1



1

SOLD - Over 55's Living at its best ~ Blaxland Gardens

This purpose built modern apartment offers a great opportunity for astute investor or savvy purchaser. Offering two bedrooms with built in wardrobes, combined lounge and dining rooms, modern kitchen with granite bench tops and stainless steel gas appliances complimented by a fantastic dedicated outdoor entertaining area. The apartment, common recreation room, and mature gardens are all on the ground floor with access to the basement car park provided by both stairs and lift access. Public transport is on your doorstep providing a direct link to the Top Ryde shopping precinct and surrounding suburbs.

Price: SOLD
Council Rates: \$237.00 p/q
Water Rates: \$172.00 p/q
Strata Rates: \$960.00 p/q

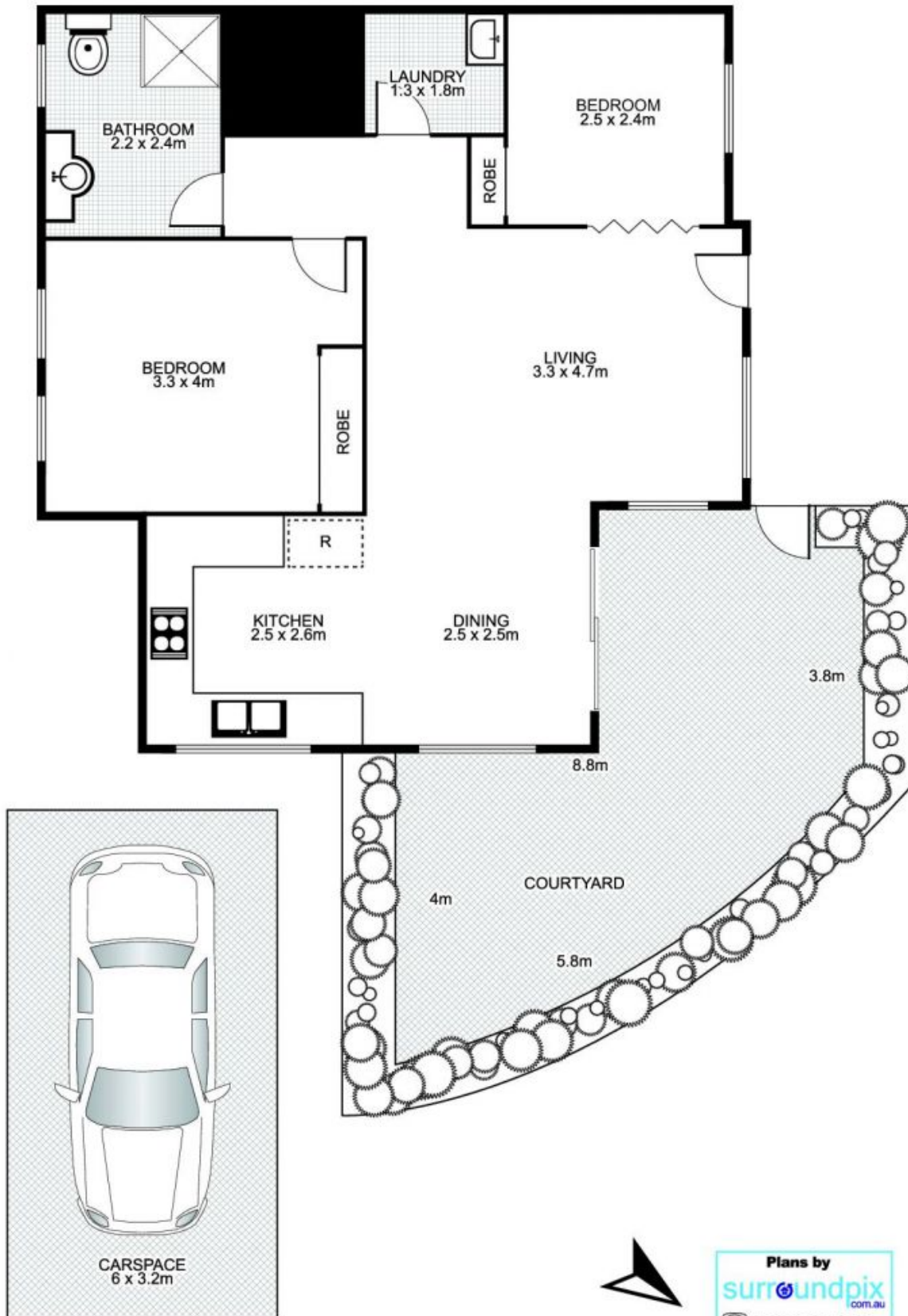
Make the right investment decision and arrange a property inspection today.

- Private ground floor two bedroom apartment with built-in robes
- Combined lounge and dining rooms with split cycle air conditioning
- Modern kitchen with granite bench tops & stainless steel gas appliances
- Fantastic tiled outdoor entertaining area with north easterly aspect
- Security building and grounds with secure under building car space

Time Realty

9712 1188

**26/335-337 Blaxland Road,
RYDE**



This floor plan is intended as a guide only. Layout dimensions are approximate only. No representation or warranties of any nature whatsoever are given or intended. Any person using this information should rely on their own enquiries.



Plans by
surroundpix
com.au
1300 30 32 40