



5/13 Bortfield Drive Chiswick, NSW



SOLD - Views and more

Offering a lifestyle by the bay, this two bedroom two bathroom apartment boasts natural light with open plan living spaces and is ideally located in a tightly held well-kept complex with beautiful water views. Boasting 2 generously sized bedrooms, main with ensuite and original kitchen in great condition. Other convenient features include internal laundry, storage and under cover parking spot. Perfectly positioned in a waterfront building with pool, park and ferry wharf adjoining the property. With all amenities only moments away, this apartment will appeal to young home buyers or can be an easy-care investment opportunity with strong rental demand.

Price: SOLD for \$670,000
Council Rates: \$256.00 p/q
Water Rates: \$163.00 p/q
Strata Rates: \$767.00 p/q

- Modern 2 bed 2 bath apartment in waterfront complex
- Spacious light filled interiors, balcony with water views
- Original kitchen & bathrooms, pool in complex & ferry wharf
- Well maintained block with low levies, storage & car space
- Close to all amenities including ferry, bus, shops, parks & bay

Adam Scappatura **Frank Settineri**

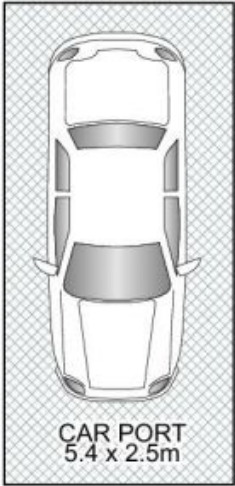
0413 355 481

0414 889 319

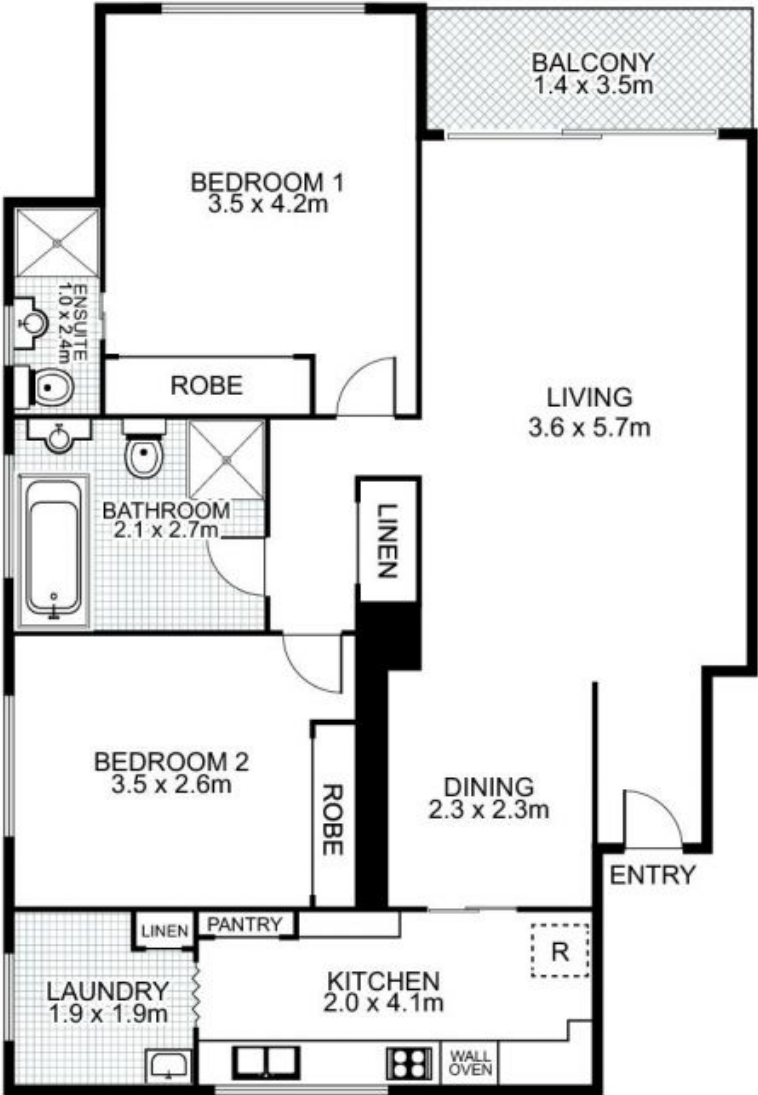
**5/13 Bortfield Drive,
CHISWICK**



STORAGE
5.7M²



CAR PORT
5.4 x 2.5m



Plans by
surroundpix
com.au
1300 30 32 40

This floor plan is intended as a guide only. Layout dimension are approximate only. No representation or warranties of any nature whatsoever are given or intended. Any person using this information should rely on their own enquiries.