



5/49 Thomas Street Ashfield, NSW



## SOLD - The Perfect Starter

Ideally positioned only a short walk to both Ashfield and Croydon Train Station, this one bedroom apartment will make the perfect first home or investment. Set on 2 levels with its own private entrance, this apartment offers combined living and dining downstairs with tidy and functional kitchen, while upstairs you will find a large bedroom with built-ins and main bathroom with internal laundry. Situated in a small block with low levies and close to all amenities makes this property just perfect for those looking to enter the local market or seeking their next astute investment.

**Price:** SOLD  
**Council Rates:** \$250.00 p/q  
**Water Rates:** \$186.00 p/q  
**Strata Rates:** \$494.40 p/q

- Large 1 bedroom 1 bathroom apartment
- Set on 2 levels, tidy kitchen, internal laundry
- Small block with low levies, private entrance
- Moments from Ashfield & Croydon Station
- Close to all amenities incl. local shopping village

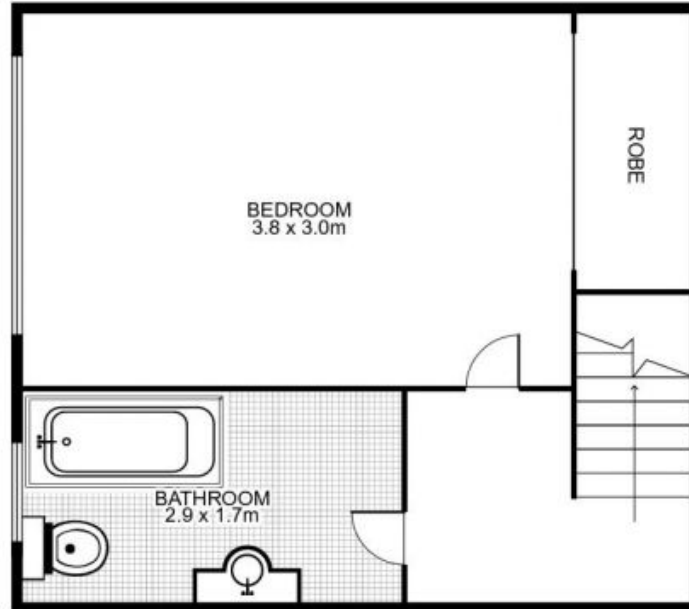
**Frank Settineri**

0414 889 319

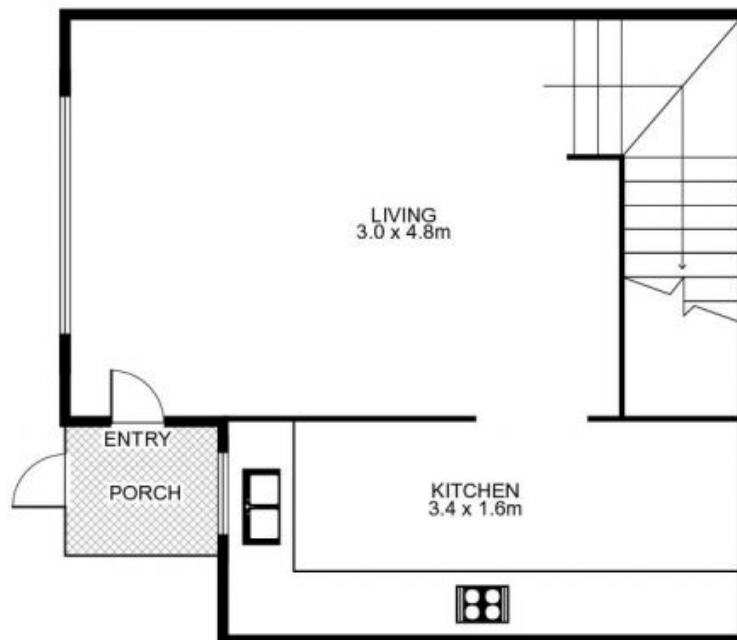
**Adam Scappatura**

0413 355 481

# 5/49 Thomas Street, ASHFIELD



UPPER FLOOR



LOWER FLOOR



This floor plan is intended as a guide only. Layout dimension are approximate only. No representation or warranties of any nature whatsoever are given or intended. Any person using this information should rely on their own enquiries.