



26/2 Evelyn Avenue Concord, NSW



2



1



1

SOLD - Perfect First Home or Investment

Perfectly positioned just a short stroll from Concord Village is this light filled 2 bedroom apartment. Located on the top floor with an Easterly aspect, this apartment boasts an abundance of natural light. Offering spacious living & dining areas, two large bedrooms both with built-ins and private leafy balcony providing a great sunny outdoor escape. Both the kitchen and bathrooms are neat & tidy with some recent updates and also offering separate bath and shower. You also have the bonus of your own private undercover car space. All amenities are only a short stroll away, including buses, shops/cafes, schools, gyms, golf course, parks and Bay. It's a rare offering in a great location.

Price: SOLD
Council Rates: \$256.00 p/q
Water Rates: \$185.00 p/q
Strata Rates: \$525.00 p/q

- Spacious & light filled 2 bedroom apartment
- Sunny aspect with private and leafy balcony
- Neat & tidy kitchen and bathroom, built-ins
- Well maintained block, undercover car space
- Short stroll to shops, buses and all amenities

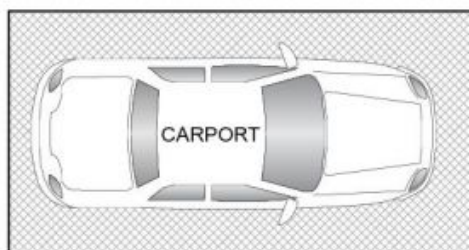
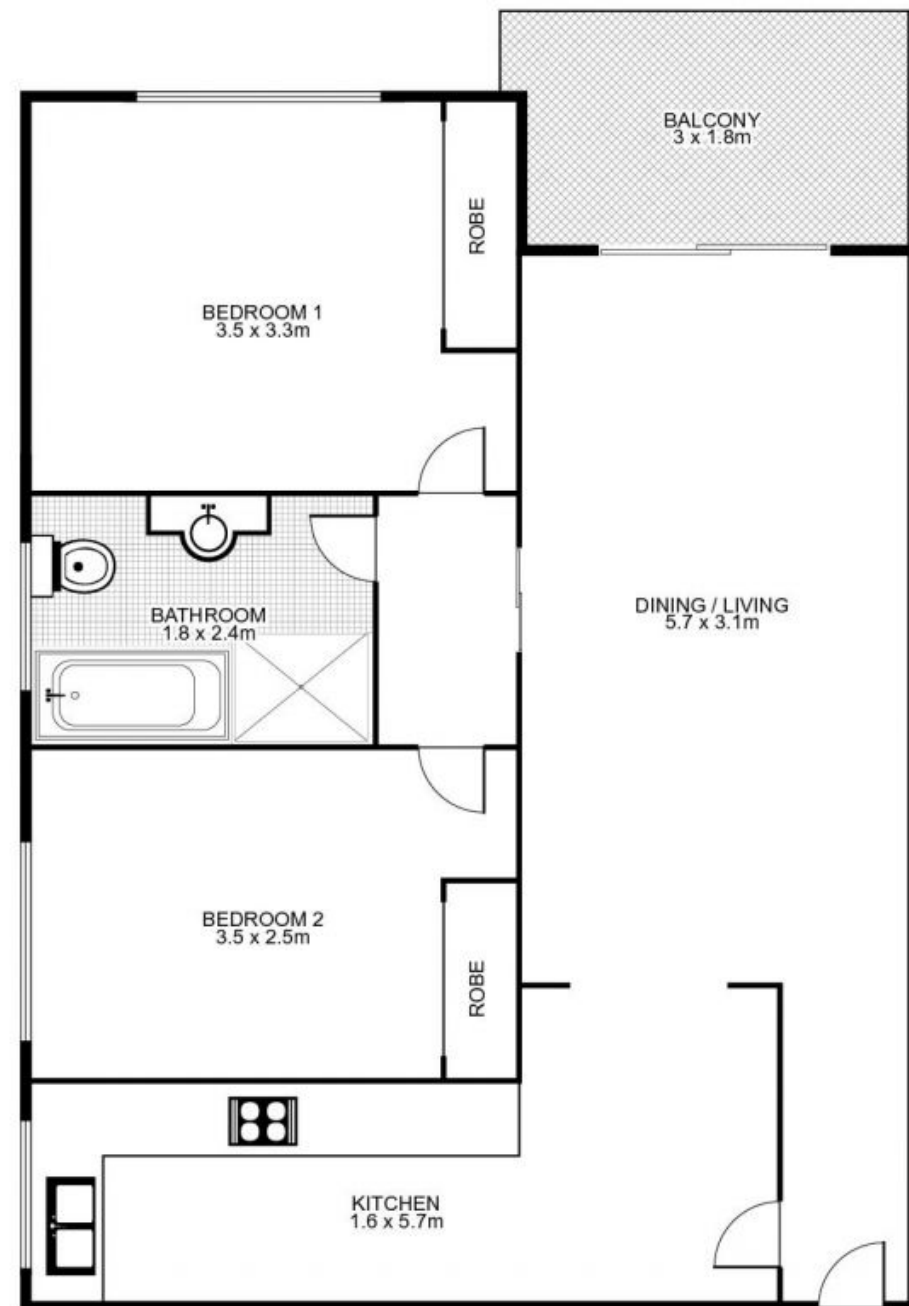
Jim Piper

0417 018 161

Time Realty

9712 1188

26/2 Evelyn Avenue, CONCORD



This floor plan is intended as a guide only. Layout dimension are approximate only. No representation or warranties of any nature whatsoever are given or intended. Any person using this information should rely on their own enquiries.