



268 Lyons Road Russell Lea, NSW



2



1



1

SOLD - Convenient and Character Semi with Land

With lovely original features throughout, this solid two bedroom full brick semi-detached home will attract both investors and home owners. Being set on a generous 370sqm (approx) portion of land, gives plenty of scope to extend or renovate. Features of this beautiful Semi include 2 double sized bedrooms with ceiling fans, main bedroom with built-ins, modern kitchen with stainless steel appliances and breakfast bar, reverse cycle air conditioning, solar power, solar hot water and 2 water tanks. Deep and leafy private rear garden with sunny deck. The potential is evident to create your dream home. All amenities such as local schools, city buses, restaurants, cafes, parks, Five Dock, Drummoyne and Birkenhead Point shopping centres are close by, which also presents added value. The location speaks for itself. A rare offering! Don't hesitate!

- 2 Bed full brick Semi with lovely original features
- Modern kitchen with stainless steel appliances
- Lead lights, high ceilings & polished timber floors
- Leafy and private garden with sunny rear deck
- The location speaks for itself, close to all amenities

Price: SOLD
Council Rates: \$259.00 p/q
Water Rates: \$177.00 p/q

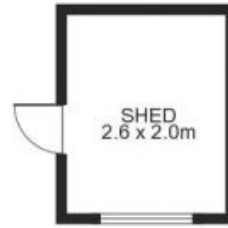
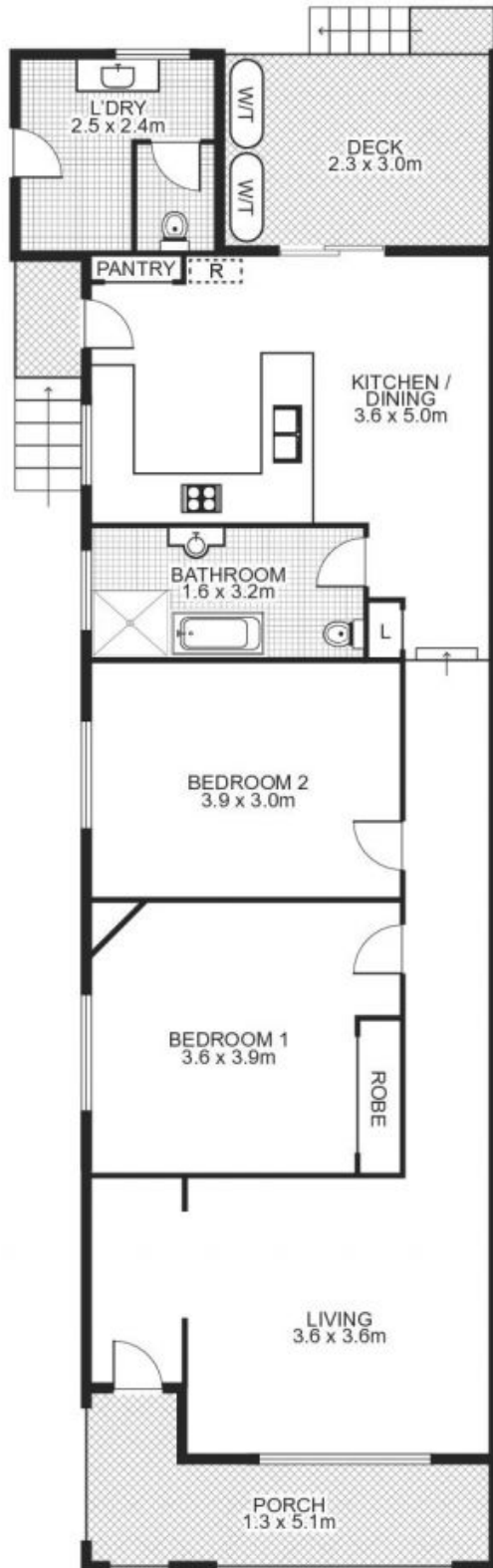
Jim Piper

0417 018 161

Frank Settineri

0414 889 319

268 Lyons Road, RUSSELL LEA



Plans by
surroundpix
com.au
1300 30 32 40

This floor plan is intended as a guide only. Layout dimension are approximate only. No representation or warranties of any nature whatsoever are given or intended. Any person using this information should rely on their own enquiries.