



6/249 Georges River Road Croydon Park, NSW



3



2



2

Contemporary Designed Townhouses - Secure your new home this weekend

One week until completion. Brand new boutique townhouses in the heart of Croydon Park with a choice of either 2 or 3 bedrooms. No expense has been spared with its inclusion of premium fittings and finishes elevating these outstanding contemporary townhouses to new levels of sophistication. Each townhouse with open plan lounge and dining areas that overlooks a private sun-filled courtyard, flawless entertainer's kitchen lavishly furnished with Westinghouse stainless steel appliances, Caesar benchtops & gas cooking, 2 luxurious bathrooms with spa bath, choice of 2 or 3 king size bedrooms with huge built in robes, split system air-conditioning and secure carspaces. Its indulgent proportions are complemented by the finest interiors. Properties like these don't come around very often, highly recommended taking a look and organising an inspection! Only moments to local cafes, restaurants, schools, parks and transport.

- Brand new townhouses with choice of 2 or 3 bedrooms
- Innovative design with quality fittings & finishes, air con
- Entertainer's kitchen with stainless steel appliances
- Living areas overlook courtyard, 2 Luxurious bathrooms
- Secure carspaces, only moments to cafes, parks & transport

Call Lambros Markessinis on 0407 788 777 to to arrange an inspection.

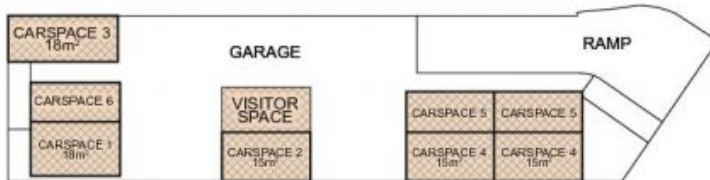
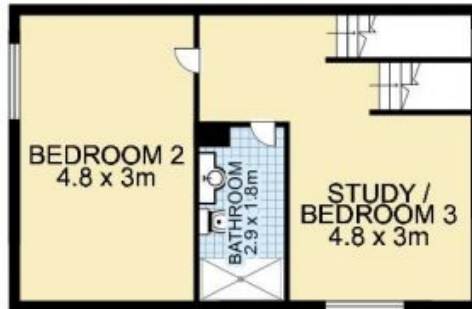
Price: SOLD By Lambros Markessinis
Council Rates: \$250.00 p/q
Water Rates: \$185.00 p/q
Strata Rates: \$480.00 p/q

Lambros Markessinis Time Realty

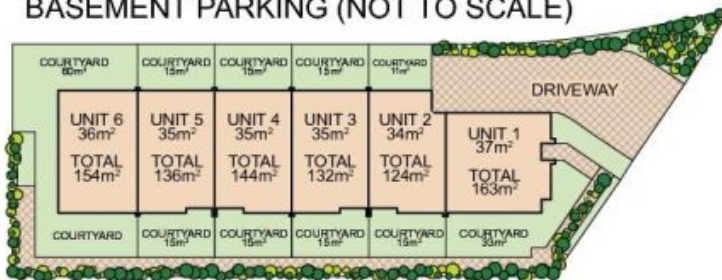
0407 788 777

9712 1188

**6/249 Georges River Road,
CROYDON PARK**



BASEMENT PARKING (NOT TO SCALE)



GROUND FLOOR SITEMAP



Plans by
surroundpix
com.au
1300 30 32 40

This floor plan is intended as a guide only. Layout dimension are approximate only. No representation or warranties of any nature whatsoever are given or intended. Any person using this information should rely on their own enquiries.