



15/134 Hampden Road Abbotsford, NSW



2



1



1

SOLD!! - Northerly Aspect with District Views

Perfectly positioned at the rear of a small boutique block of only 15, this exceptional lifestyle residence has the most perfect bright and airy Northerly aspect. Offering 2 generously sized bedrooms, tidy kitchen and bathroom and a huge sunlit living area which flows graciously out to a sunny North facing and very private balcony with gorgeous leafy district views. A large lock up garage and internal laundry only add to the appeal and comfort of this outstanding residence. With a very sought after Abbotsford address and uncompromised convenience only moments from cafes, local shopping village, parks, bay, ferry wharf and all amenities makes this the perfect first home or investment.

- Bright 2 bed apartment with enormous living/dining area
- Northerly aspect, private sunny balcony with district views
- Located at the rear of small boutique block with low levies
- Large lock up garage, internal laundry, leafy surrounds
- Conveniently located only a short stroll to all amenities

Price: SOLD
Council Rates: \$259.00 p/q
Water Rates: \$178.00 p/q
Strata Rates: \$720.00 p/q

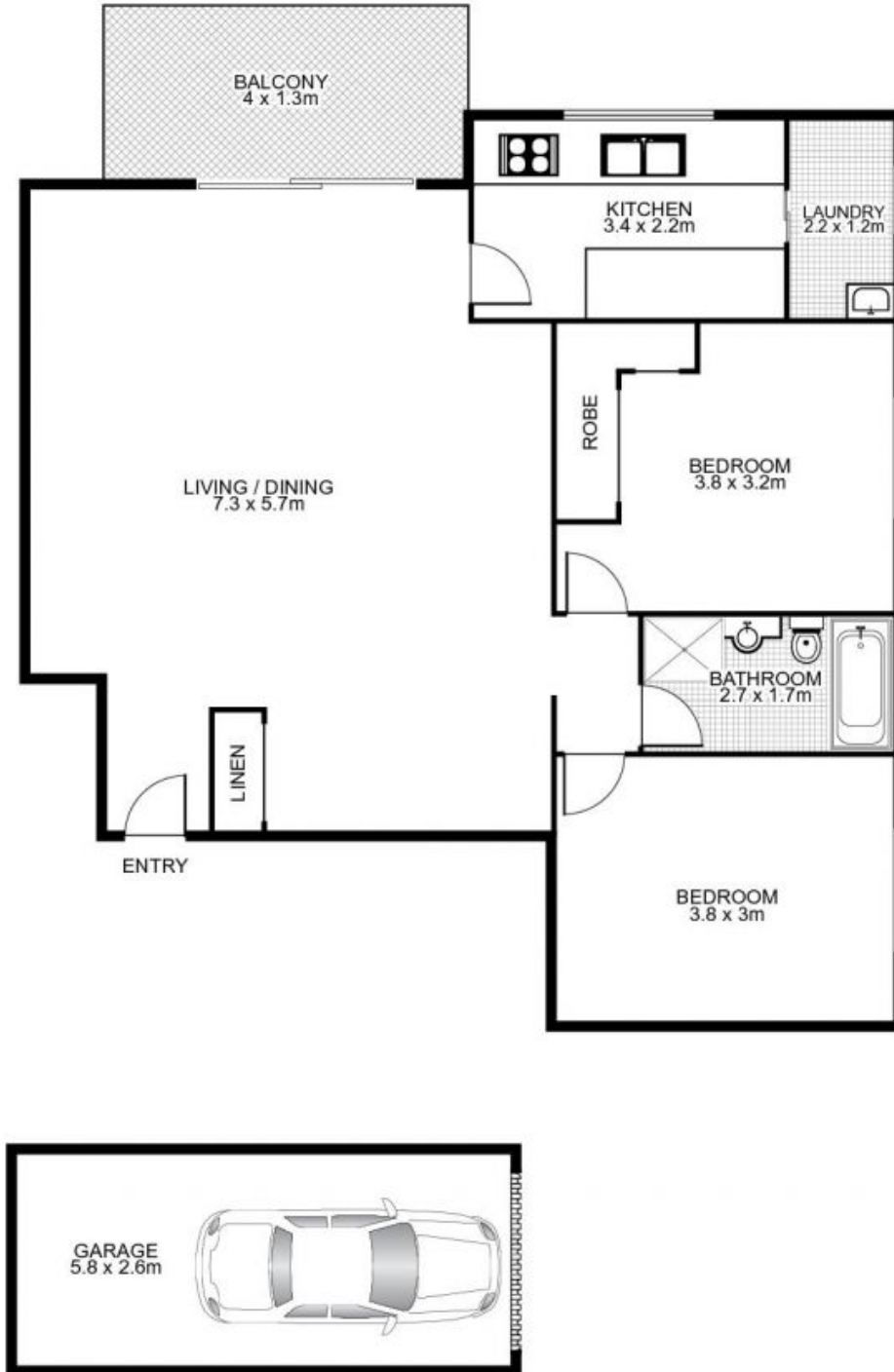
Frank Settineri

0414 889 319

Adam Scappatura

0413 355 481

15/134 Hampden Road, ABBOTSFORD



Plans by
surroundpix
com.au
1300 30 32 40

This floor plan is intended as a guide only. Layout dimension are approximate only. No representation or warranties of any nature whatsoever are given or intended. Any person using this information should rely on their own enquiries.