



40 Bertram Street Mortlake, NSW

So many possibilities

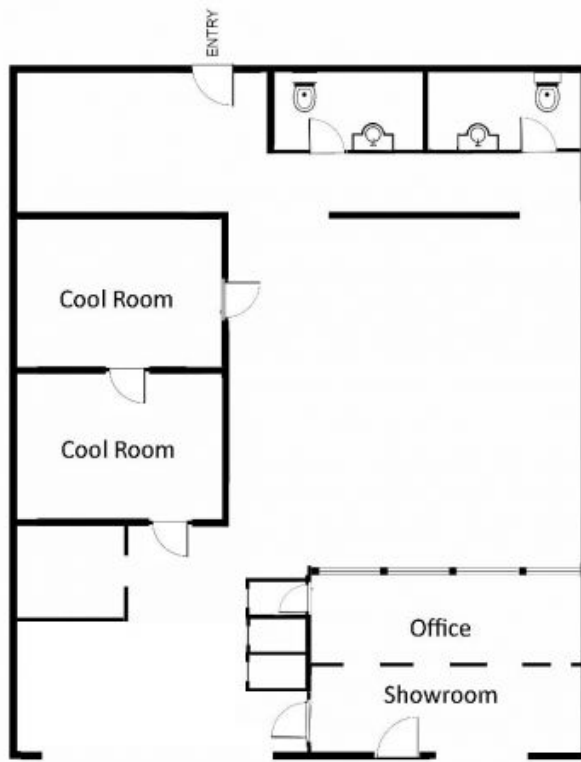
- Warehouse in the heart of Mortlake
- Currently leased netting a desirable income
- Commercial kitchen with cool rooms, grease trap & storage
- Reaping the benefits of dual street frontage, 326.6 sqm (approx.)
- Off street parking on both frontages with seamless access
- Opportunity to turn into residential site, conversion or owner occupier
- Close proximity to Breakfast point, Concord, M4, Putney Punt & CBD
- Agent declares interest

Price: SOLD
Council Rates: \$481.00 p/q
Water Rates: \$1,475.00 p/q

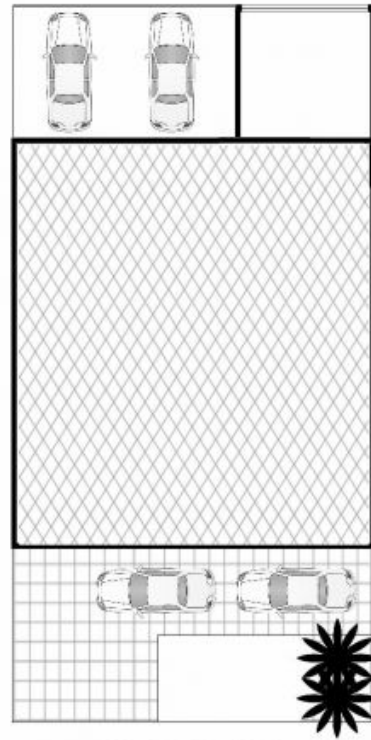
Adam Scappatura Frank Settineri

0413 355 481

0414 889 319



FLOORPLAN



SITE PLAN