



38 Wattle Street Haberfield, NSW



4



1



3

SOLD BY CHRIS GEORGANTONIS \$1,766,000

This solid brick family home is set on a huge 695.6 sqm North Facing parcel of land is being offered for the first time in over 46 years.

Presented in excellent condition sun filled interiors, spacious living room elevated north facing deep private rear yard, generous sized bedrooms high detailed ceilings fitted with original doors and fixtures from a classic era.

Here is an opportunity to create an exceptional residence in a much sought after suburb. Centrally located to the best in the inner west with easy access to all amenities and gateway transport to the CBD.

DETAILS OF THE PROPERTY:

- 695.6 sqm North Facing block of land
- Solid double brick home
- Features 4 bedrooms 1 bathroom
- Gas kitchen with offset dining area
- Huge sunroom separate internal laundry
- Potential to extend back or up (S.T.C.A.)
- Close to Schools shops and bayside parks and walkways
- Everyday public bus service to the CBD

SOLD BY CHRIS GEORGANTONIS

Price: \$1,766,000

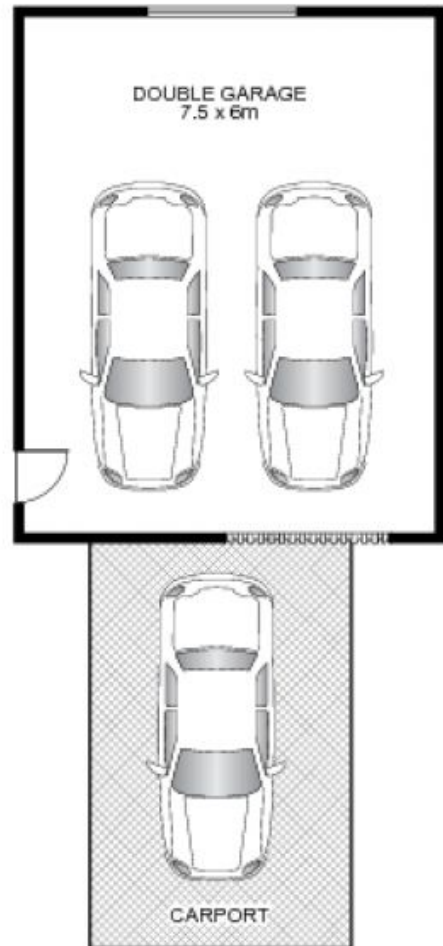
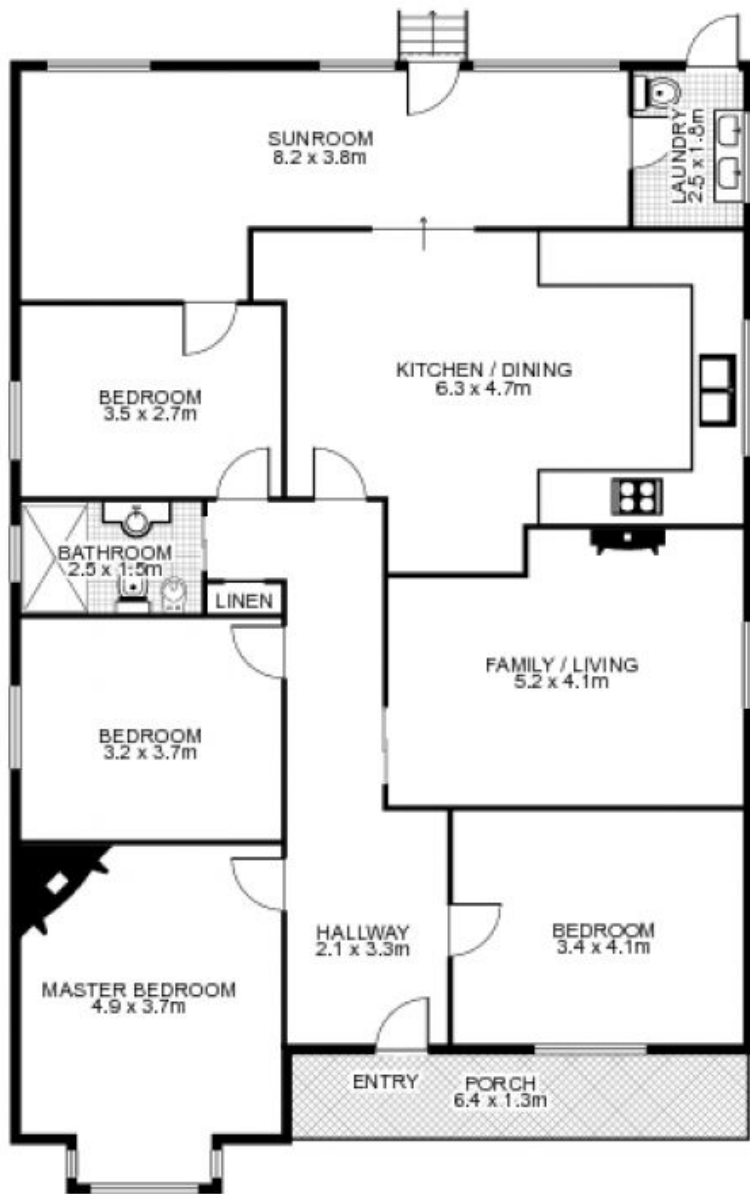
Council Rates: \$482.00 p/q

Water Rates: \$187.00 p/q

Chris GeorgantonisTime Realty

0405 640 830

9712 1188



38 Wattle Street, HABERFIELD



time

This floor plan is intended as a guide only. Layout dimensions are approximate only. No representations or warranties of any nature whatsoever are given or intended. Any person using this information should rely on their own enquiries. Floor Plans by SURROUNDPIX.