



18/162g Burwood Road Concord, NSW



2



2



2

## SOLD - Waterfront Splendour!

Time Realty presents this rare and one of a kind 2 bedroom North East facing apartment with serene water views. Located in one of Concord's most prestigious waterfront complexes, this apartment offers uninterrupted water views over Exile Bay from lounge and balcony and water views over Parramatta River from bedrooms and dining area. You will be impressed with the spacious and modern design of this amazing apartment offering 2 bedrooms with built-in robes, ensuite in main, high ceilings, full water views, spacious living and dining areas that flow to large balcony which is perfect for entertaining and the convenience of double lock up garaging. Other features that compliment this apartment are its ducted air conditioning & resort style facilities which includes swimming pool and gym. Currently leased to a great tenant this apartment is a "MUST" to inspect!

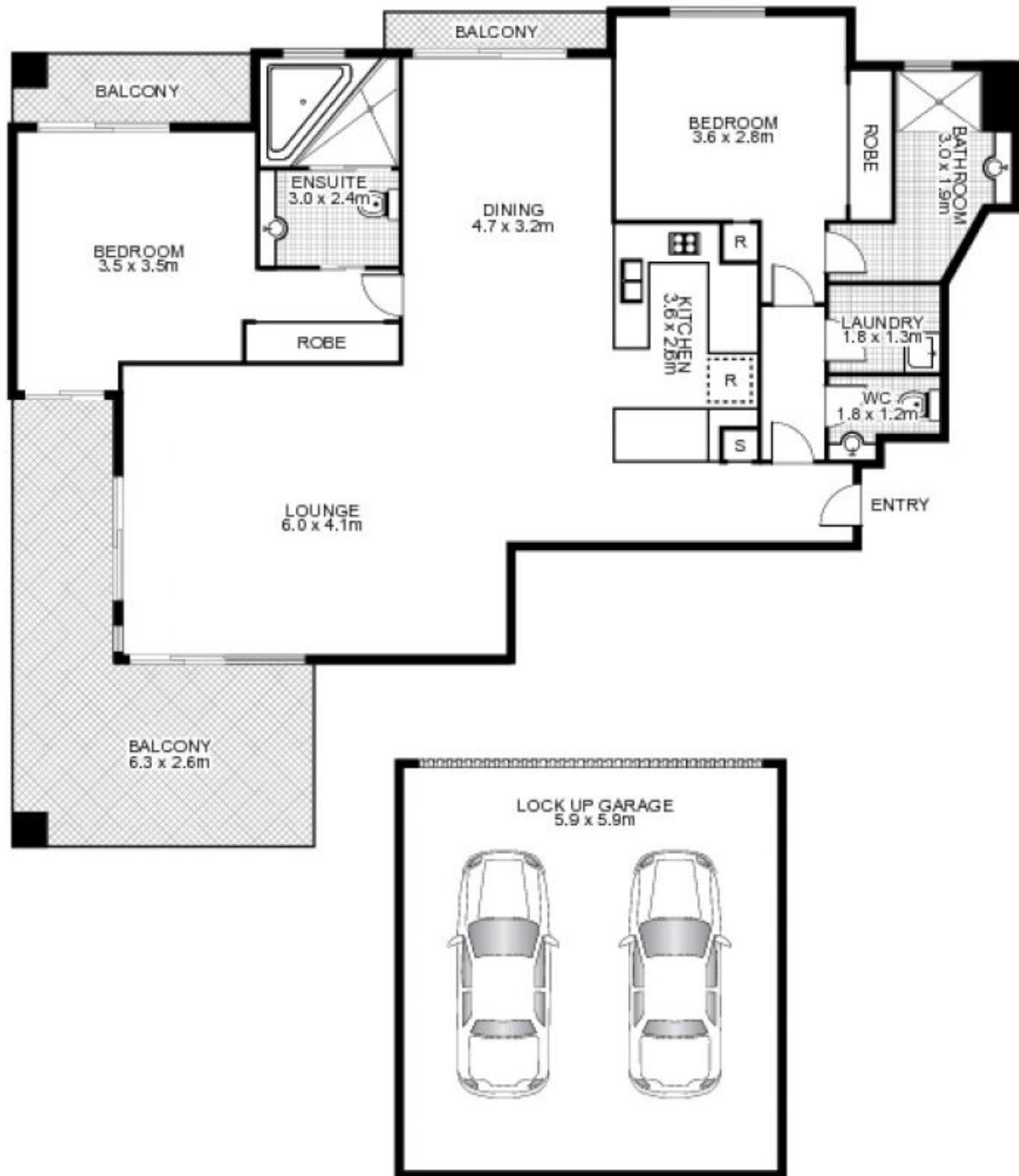
- 2 Bed apartment with panoramic water views
- Modern kitchen, spacious living & dining areas
- Built-in robes, ensuite in main, large balcony
- Secure double lock up garage, serene location
- Resort style facilities includes pool, gym & sauna

**Price:** SOLD  
**Council Rates:** \$262.00 p/q  
**Water Rates:** \$169.00 p/q  
**Strata Rates:** \$1,863.68 p/q

**Adam Scappatura** **Frank Settineri**

0413 355 481

0414 889 319



18/162G Burwood Road, CONCORD



**NORTH**

**time**

This floor plan is intended as a guide only. Layout dimensions are approximate only. No representations or warranties of any nature whatsoever are given or intended. Any person using this information should rely on their own enquiries. Floor Plans by SURROUNDPIX.