



3/1 Gow Street Abbotsford, NSW



2



1



2

## SOLD - Easy Lifestyle with Water Views

For nearly 30 years the current owner has enjoyed the lifestyle of this quality two bedroom townhouse with spectacular leafy water views across Hen and Chicken Bay.

The home is situated within close proximity to local schools, cafes', restaurants and waterfront parklands. Being able to walk to City buses, the River cat and the ever popular Sydney Rowing Club presents added value.

Also a leisurely stroll takes you to either Abbotsford or Wareemba Village shops. Nearby shopping centres are located in Five Dock, Drummoyne, Birkenhead Point and Burwood.

Impeccably presented throughout features include two double bedrooms both with built-ins and access through glass sliding doors to a full length rear balcony with a leafy outlook.

The bright upstairs open plan living and dining flows through full length glass sliding doors to a huge entertainer's courtyard/terrace with peaceful water views. Here you can enjoy the sunny aspect and stunning sunsets across Hen and Chicken Bay.

There is a refurbished timber kitchen with granite bench tops, an integrated dishwasher plus a breakfast bar/servery. T...

**Price:** SOLD  
**Council Rates:** \$201.00 p/q  
**Water Rates:** \$223.00 p/q  
**Strata Rates:** \$1,166.15 p/q

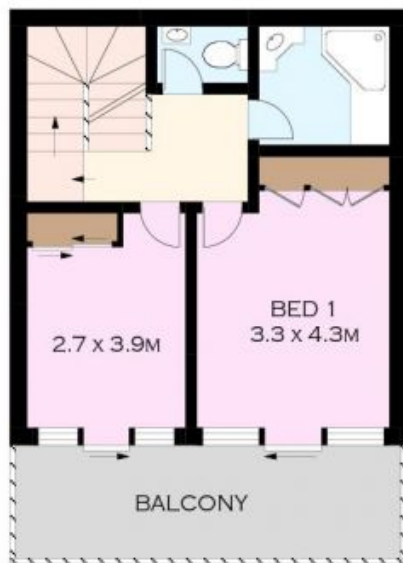
- Double bedrooms both with built-ins, terrace access, leafy outlook
- Huge entertainer's courtyard/terrace features peaceful water views
- Combined lounge and dining, sliding glass doors open to the courtyard
- Timber kitchen, granite bench tops, breakfast bar, integrated dishwasher
- Updated bathroom, 2 WC's, internal laundry, 2 car lock up garage + storage

**Jim Piper**

0417 018 161

**Time Realty**

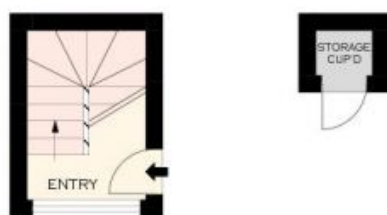
9712 1188



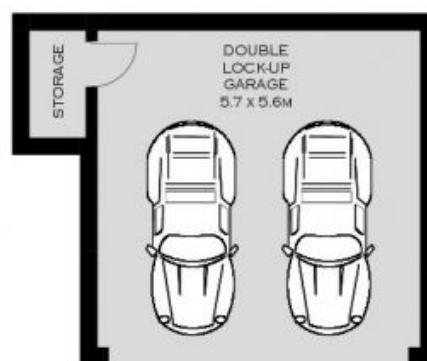
FIRST FLOOR



SECOND FLOOR



GROUND FLOOR



PLANS SHOWN ONLY INDICATIVE OF LAYOUT. DIMENSIONS ARE APPROXIMATE.  
Floor plans by [www.remaustralia.com](http://www.remaustralia.com)  
Ref. No: 11138



3/1 GOW STREET

ABBOTSFORD