



9/8 Rokeby Road Abbotsford, NSW



2



1



1

SOLD - Entertainers Terrace with Waterviews

Perfectly positioned in the highly sought after Abbotsford peninsula, and only a short stroll from the beautiful water's edge is this impeccable 2 bedroom apartment. With a highly desired Northerly aspect, this bright and airy apartment boasts generously sized double bedrooms, large tidy kitchen, spacious open plan living area that flowing easily out to a large North Facing terrace with district and water view's, which is just perfect for outdoor living and entertaining. Other features include a second balcony, internal laundry, undercover parking and tidy bathroom with separate toilet. Located at the rear of small boutique block of only 10 in one of Abbotsford's most sought-after streets and close to all amenities including public transport, parks, local shopping village, ferry wharf and the Bay, makes this property perfect for the home occupier or investor.

Price: 848,000
Council Rates: \$260.00 p/q
Water Rates: \$177.00 p/q
Strata Rates: \$866.00 p/q

- North Facing bright 2 bed apartment with water glimpses
- Spacious L-shape living area, large entertainers terrace
- Large tidy kitchen, 2 balconies, very private & tranquil
- Boutique block, undercover parking, low quarterly levies
- Short walk to Bay, parks, shops, transport and all amenities

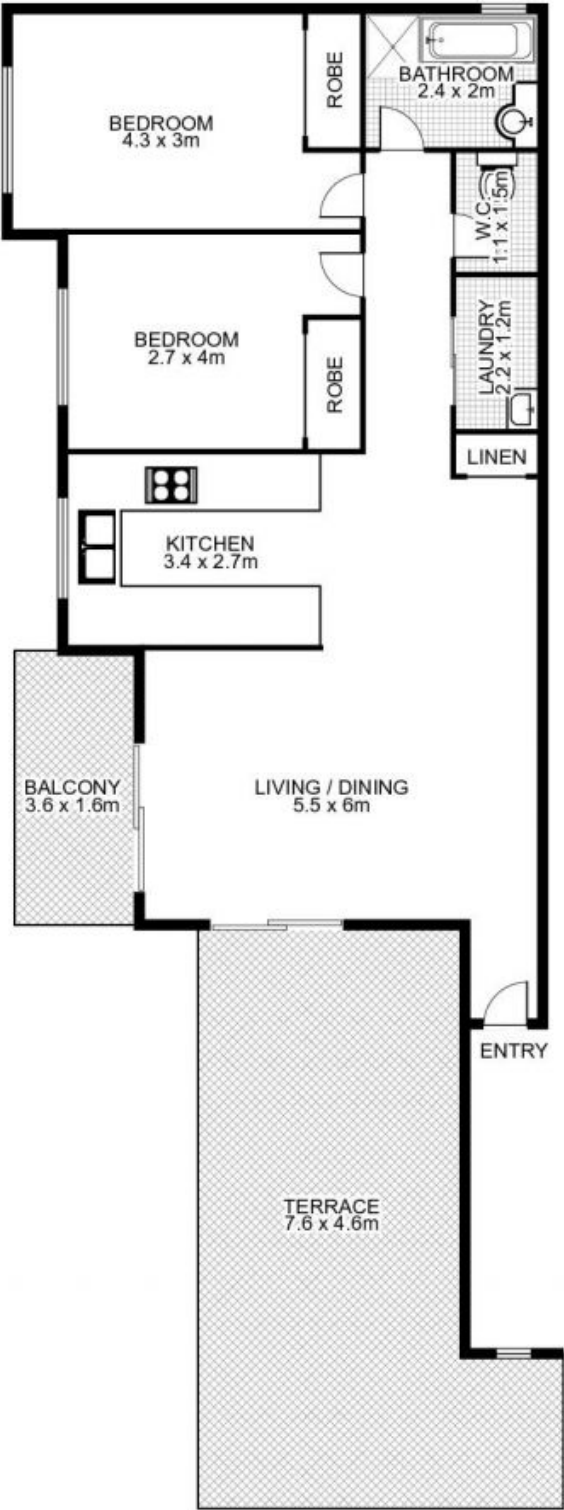
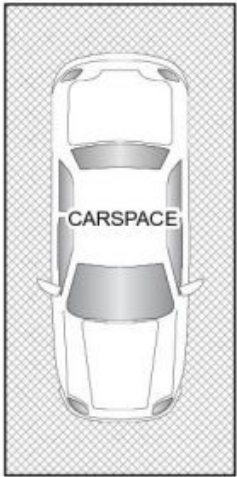
Frank Settineri

0414 889 319

Adam Scappatura

0413 355 481

**9/8 Rokeby Road,
ABBOTSFORD**



Plans by
surroundpix
com.au
1300 30 32 40

This floor plan is intended as a guide only. Layout dimension are approximate only. No representation or warranties of any nature whatsoever are given or intended. Any person using this information should rely on their own enquiries.