



26 High Street Strathfield, NSW



2



1



1

SOLD - Under Instructions from NSW Trustee and Guardian

Brilliantly located just around the corner from all the conveniences, this original home sits on a large block of 537.4sqm (approx.) and wide frontage of 15.221 m (approx.). In original condition, it offers exciting renovation potential or the opportunity to knock down and rebuild. The property comprises two bedrooms, lounge and dining area and other period features as well as wide drive way access to rear. Rarely does such a great building block become available in this tightly held exclusive precinct of Strathfield.

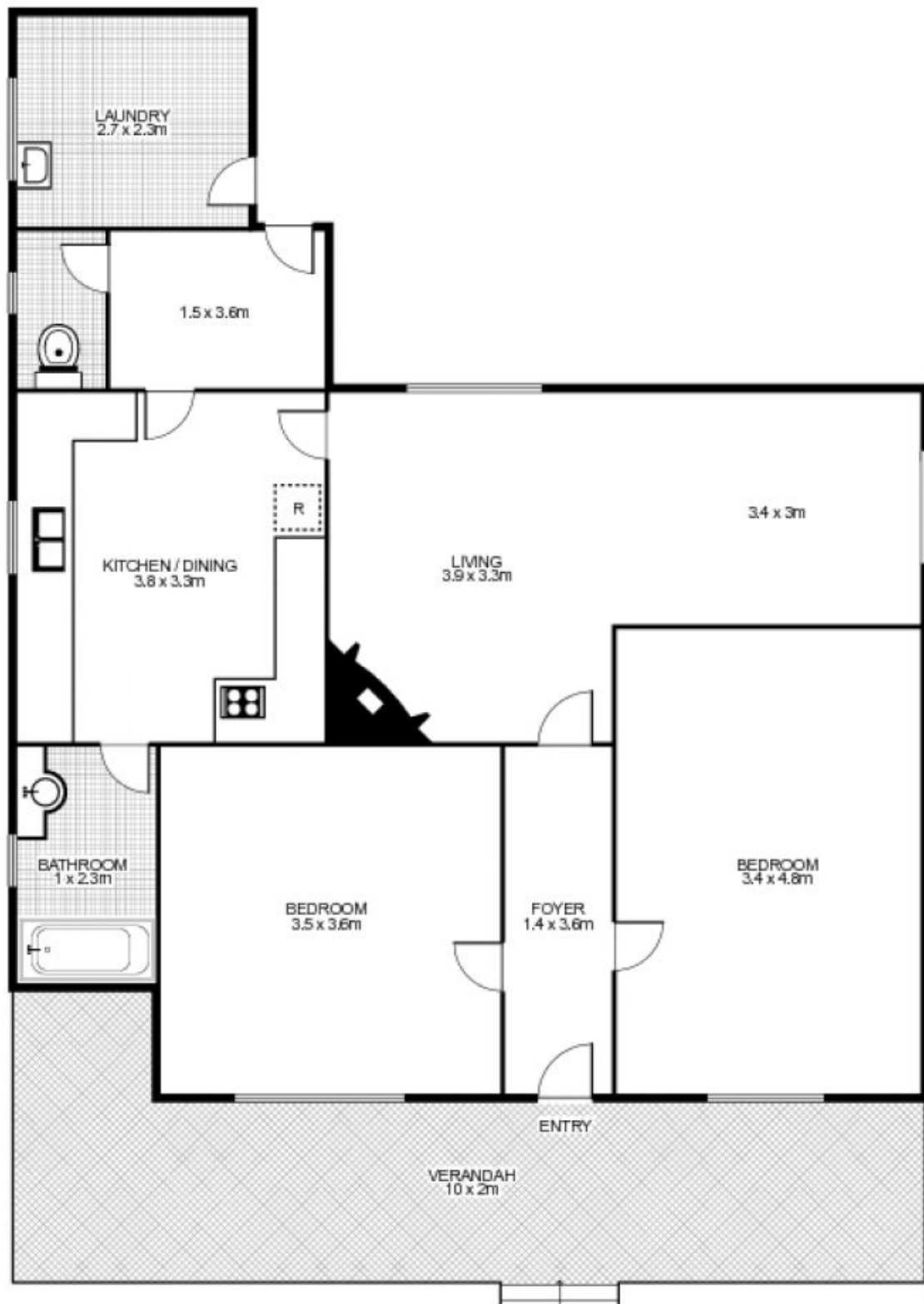
- Original 2 bed home with period features in a tightly held position
- Large 537.4 sqm block with a wide frontage of 15.221 m (approx.)
- Potential plus, wide driveway provides access to huge rear yard
- Great opportunity to either renovate or rebuild your dream home
- Only moments from parks, schools, local shopping and transport

Price: SOLD
Council Rates: \$446.00 p/q
Water Rates: \$192.00 p/q

Adam Scappatura **Frank Settineri**

0413 355 481

0414 889 319



26 High Street, STRATHFIELD

NORTH

time

This floor plan is intended as a guide only. Layout dimensions are approximate only. No representations or warranties of any nature whatsoever are given or intended. Any person using this information should rely on their own enquiries. Floor Plans by SURROUNDPIX.