



241 Lyons Road Russell Lea, NSW



2



1



1

## SOLD - Convenient and Character Semi

With lovely original features throughout, this two bedroom, 1920's, full brick, renovated semi ? detached home will attract both investors and homeowners.

All the lifestyle offerings of this popular and convenient suburb are there to be enjoyed, which represents added value.

Original features include high patterned ceilings, lead light windows, period doors, picture rails and skirting boards. There are new polished spotted gum floorboards, plantation shutters and the stylish brand new bathroom is outstanding.

Currently the home comprises of two double bedrooms and the main bedroom has a built-in. There is a bright formal lounge room and a refurbished stainless steel gas kitchen with an adjoining dining area.

Casual second living opens through glass doors to a covered deck and a private, easy care, leafy yard with a garden shed. Includes reverse cycle air conditioner, Foxtel, plus an internal laundry with a second W.C.

A great location within close proximity to local schools, city and suburban buses, medical, restaurants, cafes, clubs, waterfront parklands, Top Drummoyne shops, Birkenhe...

- Timeless 2 bedroom home, lovely original features throughout
- Bright formal lounge room, modern stainless steel gas kitchen
- Stylish brand new bathroom, new spotted gum polished floors
- Second living opens to a covered deck & leafy, private garden
- Close to all amenities, for the smart investor or home owner!

**Price:** SOLD | Time Realty

**Council Rates:** \$269.00 p/q

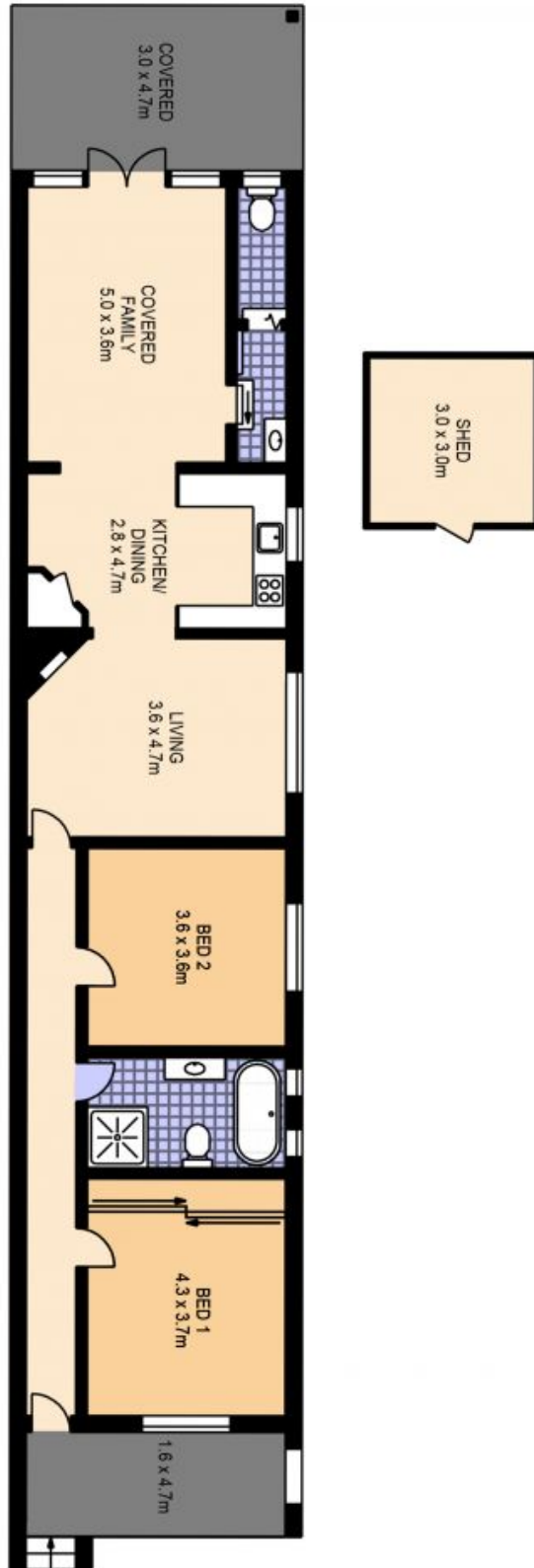
**Water Rates:** \$172.00 p/q

**Jim Piper**

0417 018 161

**Time Realty**

9712 1188



241 LYONS ROAD, RUSSELL LEA

EST. 1979  
time

PLANS SHOWN ONLY INDICATIVE OF LAYOUT. DIMENSIONS ARE APPROXIMATE.

Plans Ahead Floorplans Disclaimer: This floor plan is conceptual only. It is provided for illustrative purposes only and should not be relied upon. We make no guarantees to the correctness of this plan. All interested parties should make and rely on their own enquiries in determining the accuracy of the information contained in this floor plan.