



7/14 Bortfield Drive Chiswick, NSW



SOLD - Fabulous Waterfront Reserve Location

Nestled in the quiet of the Chiswick peninsula this one bedroom security first floor apartment ticks all the boxes for the astute investor or first time home owner. The location speaks for itself, being only a short walk to waterfront parks, Chiswick Wharf, local shops as well as CBD and suburban buses.

The apartment is light filled, airy, presented well and maintained at a high standard. Highlights include a spacious lounge and dining area which flows to a generous balcony with a peaceful, leafy outlook.

Gas cooking, plenty of bench and cupboard space are a feature of the modern kitchen. Includes a neat, tidy bathroom with bathtub, internal laundry, storage and a carport.

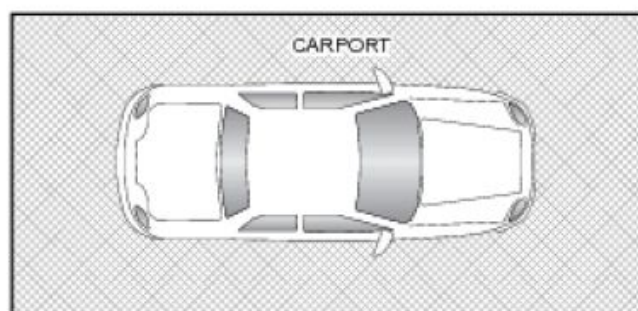
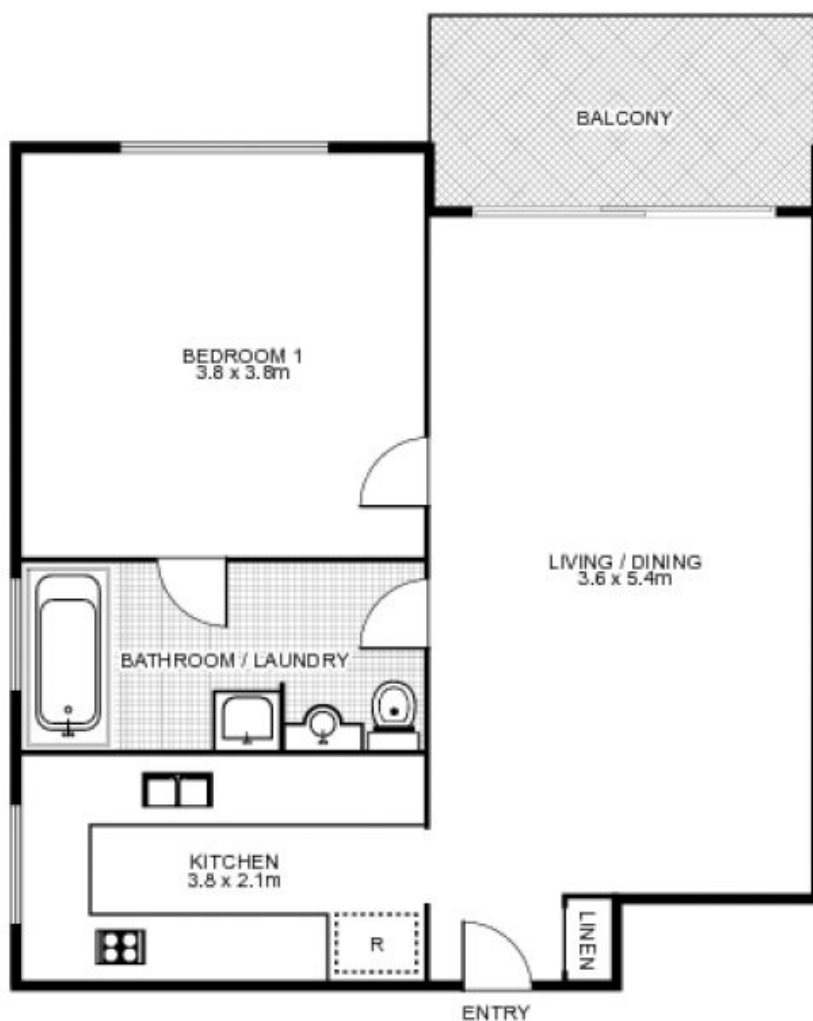
*Agents interest.

- Light filled and airy 1 bed security apartment in a prime location
- Spacious living flows to a generous balcony with a leafy outlook
- Modern gas kitchen with plenty of bench space and cupboards
- Neat & tidy bathroom, includes internal laundry, storage, carport
- Close to wharf, CBD and suburban buses, shops, waterfront parks

Price: SOLD | Time Realty
Council Rates: \$265.00 p/q
Water Rates: \$172.00 p/q
Strata Rates: \$458.55 p/q

Jim Piper
0417 018 161

Time Realty
9712 1188



7/14 Bortfield Drive, CHISWICK



time

This floor plan is intended as a guide only. Layout dimensions are approximate only. No representations or warranties of any nature whatsoever are given or intended. Any person using this information should rely on their own enquiries. Floor Plans by SURROUNDPIX.