



17/19 Pearce Avenue Newington, NSW



3



2



2

## SOLD - Penthouse apartment with sweeping views

With house-like spaces, this 3 bedroom stunning dual level top floor Penthouse offers the perfect lifestyle. This Penthouse has absolutely privacy with stunning views that stretches across Olympic Park and the horizon. Rarely offered is this extraordinary apartment experience within the exclusive Mirvac Development. Metres from the river's edge and surrounded by the delights of Newington Village shops, cafes, bike tracks, Sydney Olympic Park facilities and entertainment precinct.

Wine and dine throughout a sun-filled floorplan where an ensemble of free-flowing living and entertaining areas that radiate around a spacious and modern kitchen. Relax, chase the sun, soak up the views from your oversized terrace providing impressive alfresco accompaniment to this lovely home.

Additional highlights include two bathrooms, well-zoned bedrooms all with built-in robes, two bedrooms with private balconies, main bedroom with ensuite, split system air conditioning, separate laundry, powder room, intercom entrance plus 2 car basement parking and storage room.

Located just minutes' drive to the M4 an...

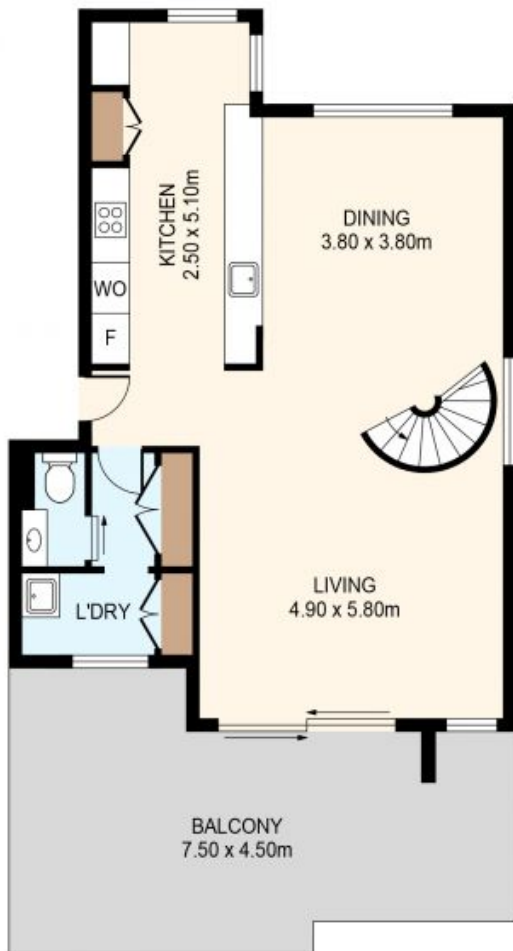
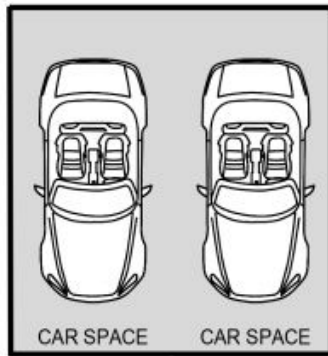
- Stunning 3 bedroom 2.5 bathroom Penthouse with views
- Spacious living areas that flows out to an oversized terrace
- Modern kitchen, two large bathrooms plus powder room
- Quality Mirvac Development, 2 car spaces & storage room
- Close to Newington Village, bike tracks and Olympic Park

**Price:** SOLD | Time Realty  
**Water Rates:** \$172.00 p/q  
**Strata Rates:** \$1,919.00 p/q

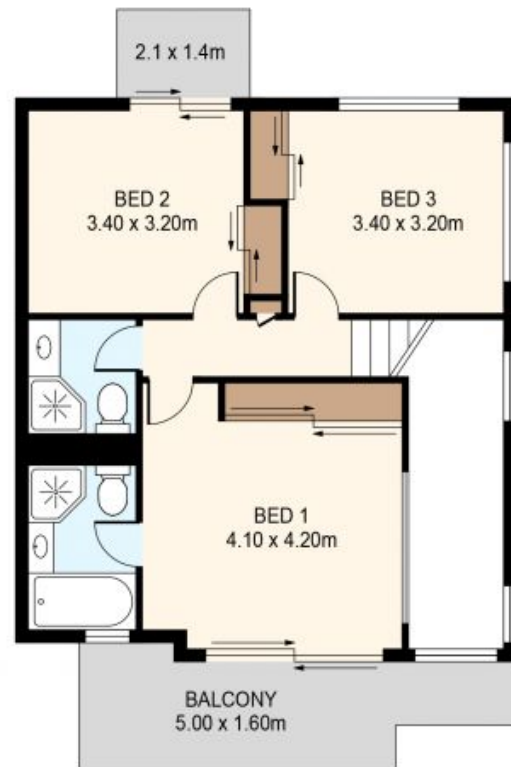
**Adam Scappatura** **Frank Settineri**

0413 355 481

0414 889 319



GROUND FLOOR



FIRST FLOOR



**17/19 Pearce Ave  
NEWINGTON**

EST. 1979  
**time**

PLANS SHOWN ONLY INDICATIVE OF LAYOUT. DIMENSIONS ARE APPROXIMATE.