



3/12 Bortfield Drive Chiswick, NSW



2



1



1

## Designer Apartment

This fully renovated apartment's sleek streamlined style creates a seductive backdrop of space-filled interiors.

Immediately revealing the wow factor with its open plan lounge and dining rooms that extend out to a private balcony with a peaceful outlook. The five star appointed gourmet kitchen with a full range of Miele appliances, 40mm marble stone bench tops & plenty of storage is designed to cook up some memorable culinary experiences.

Further features of the home include two large bedrooms, built-in wardrobe, a luxurious fully tiled main bathroom with quality fixtures and fittings and a sizeable fitted internal laundry. Also featuring in this great security apartment include an intercom and quality Italian tiles throughout. These additional features make this top quality package such a standout.

This property is located in a tightly held apartment block located a stone's throw from the water's edge and Chiswick Ferry Wharf. You will love the convenience of living arm's reach of the ferry & buses cosmopolitan caf?s and Chiswick's water front & parkland.

Inspect today will not last?.

- Fully renovated stylish two bedroom apartment
- Open plan, large balcony with peaceful outlook
- Gourmet kitchen with quality Miele appliances
- Luxurious bathroom and Italian tiles throughout
- Set in a security block located close to amenities

**Price:** SOLD | Time Realty

**Council Rates:** \$266.00 p/q

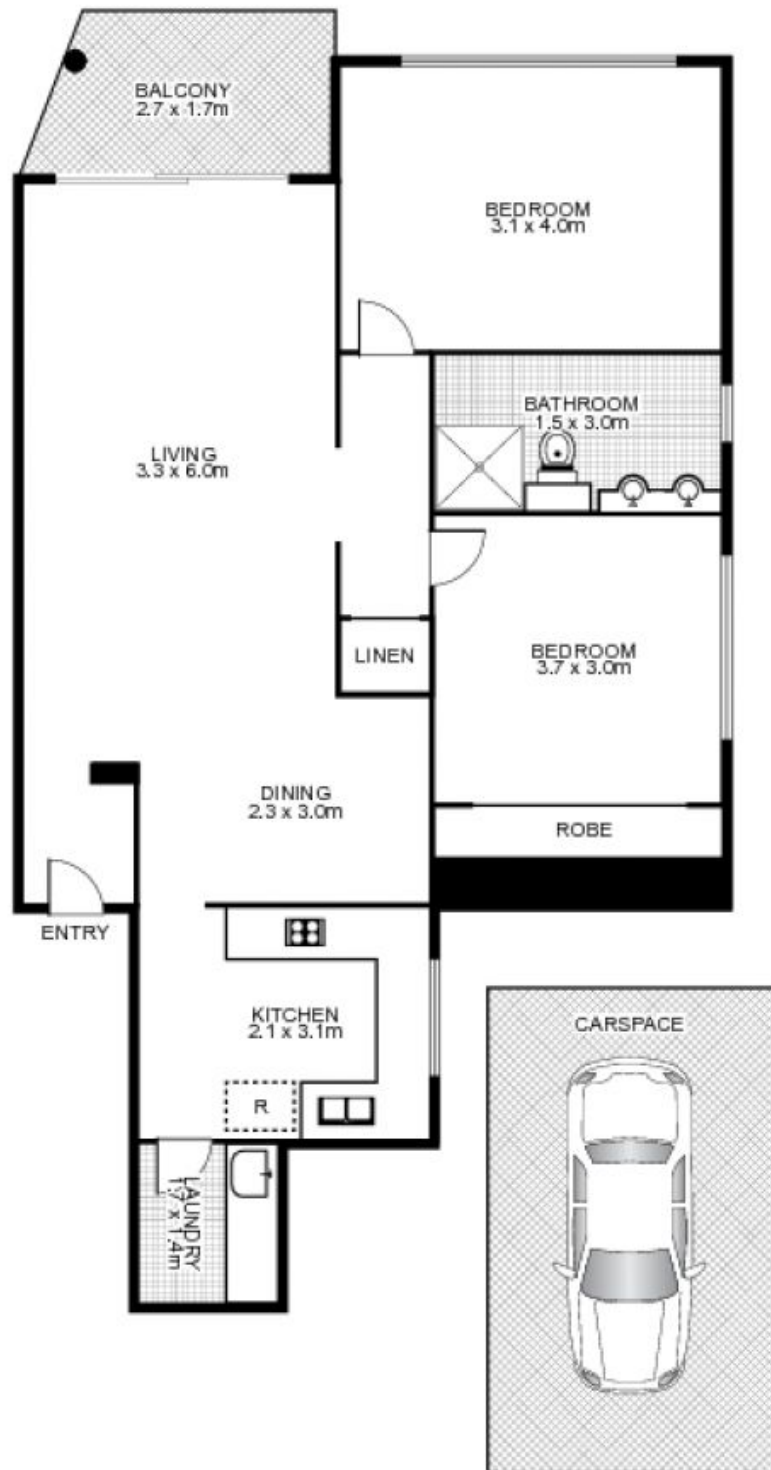
**Water Rates:** \$172.00 p/q

**Strata Rates:** \$793.50 p/q

**Adam Scappatura Jim Piper**

0413 355 481

0417 018 161



3/12 Bortfield Drive, CHISWICK

time

This floor plan is intended as a guide only. Layout dimensions are approximate only. No representations or warranties of any nature whatsoever are given or intended. Any person using this information should rely on their own enquiries. Floor Plans by SURROUNDPIX.