



2/12 Bortfield Drive Chiswick, NSW



2



1



1

SOLD - Bridge & Water Views

Positioned in a highly sought after peninsula enclave with picturesque views of Gladesville Bridge and the bay, this 2-bedroom apartment offers fresh interiors with generous living spaces and sunny balcony. An ideal first home or investment this bright and airy apartment boasts spotted gum hardwood floating timber floors, modern kitchen, built-in wardrobes, split system air conditioning and well organised internal laundry with plenty of storage. With undercover parking while only metres from ferry wharf, park, bus stop, village style shops and eateries, this property offers a magnificent lifestyle with the utmost convenience.

Price: SOLD | Time Realty
Council Rates: \$276.00 p/q
Water Rates: \$172.00 p/q
Strata Rates: \$960.00 p/q

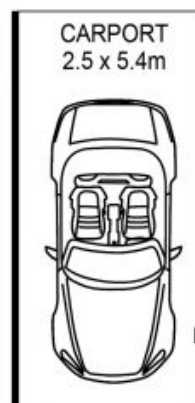
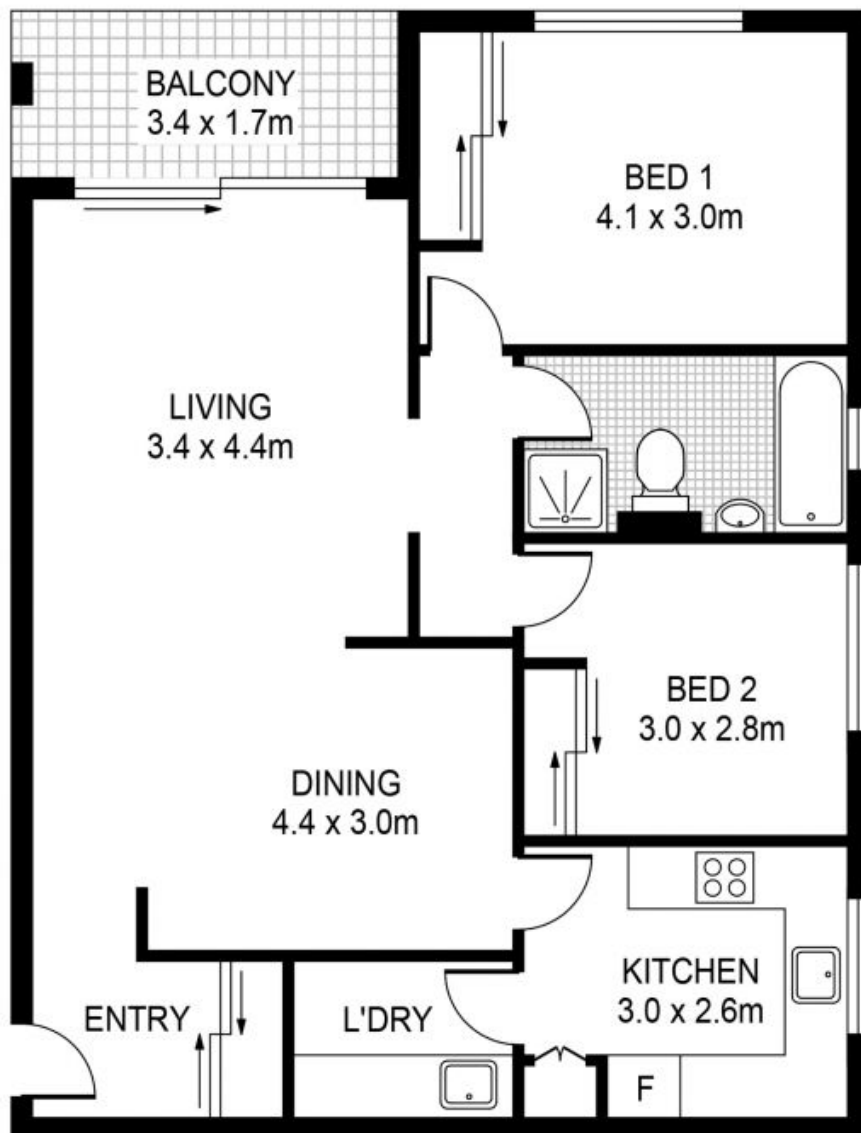
- Modern & bright 2 bedroom apartment with water views
- Sunny balcony, hardwood floors, air-con, internal laundry
- Spacious living area, modern kitchen, undercover parking
- Well maintained security building with low strata levies
- Moments from Ferry, bus, park, bay, shops and eateries

Frank Settineri

0414 889 319

Adam Scappatura

0413 355 481



2/12 Bortfield Dr
CHISWICK

EST. 1979
time

PLANS SHOWN ONLY INDICATIVE OF LAYOUT. DIMENSIONS ARE APPROXIMATE.