



7/5-7 Park Road Five Dock, NSW

 2
  2
  2

## SOLD - Private & Spacious Townhouse

Situated at the rear of a boutique block, this larger than average townhouse (approx. 265 sqm in total) offers an outstanding opportunity to both the home occupier and investor.

Defined by a large open plan living area that flows effortlessly out to a huge L-shape leafy courtyard, this home would be ideal for those who enjoy entertaining outdoors.

Loaded with new features you will be impressed with the oak style floating floors, fresh paint and brand new carpet. You'll enjoy cooking and entertaining in the spacious kitchen with stone bench tops and the large breakfast bench, and coming home will be a breeze with the massive single lock up garage with internal access & plenty of space for extra storage, plus an additional undercover security car space.

Upstairs you will find a study area, two generously sized bedrooms with built-in wardrobes, main with ensuite and balcony and a large main bathroom.

Conveniently located only a very short and easy walk to Five Dock Park, Five Dock's always vibrant shopping precinct and transport to the CBD.

If you are looking for a comfortable quality ho...

- Spacious double brick 2 bedroom, 2.5 bathroom townhouse
- Huge 265 sqm with a large leafy paved L-shaped courtyard
- Open plan living, built-ins, huge LUG with storage + car space
- Boutique block with manicured gardens & low strata levies
- Close to all amenities incl. transport, shops, parks and Bay

**Price:** SOLD | Time Realty  
**Council Rates:** \$276.00 p/q  
**Water Rates:** \$179.00 p/q  
**Strata Rates:** \$750.00 p/q

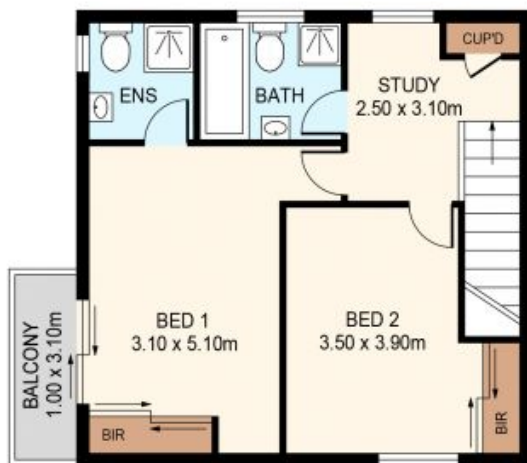
**Adam Scappatura Frank Settineri**

0413 355 481

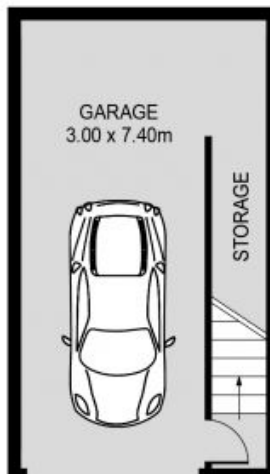
0414 889 319



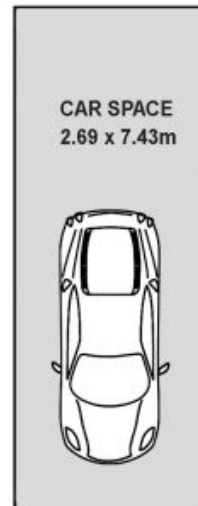
GROUND FLOOR



FIRST FLOOR



BASEMENT



7/5-7 Park Rd  
**FIVE DOCK**

EST. 1979  
**time**

PLANS SHOWN ONLY INDICATIVE OF LAYOUT. DIMENSIONS ARE APPROXIMATE.